

PHASE 2
 STRATA PLAN OF PARCEL 1,
 PLAN 33833, DISTRICT LOT
 3050, CARIBOO DISTRICT.
 B.C.G.S. 93G.097

STRATA PLAN PG:155

Deposited and registered in the
 Land Title Office at
 Prince George, B.C.
 this 31 day of Dec 1992

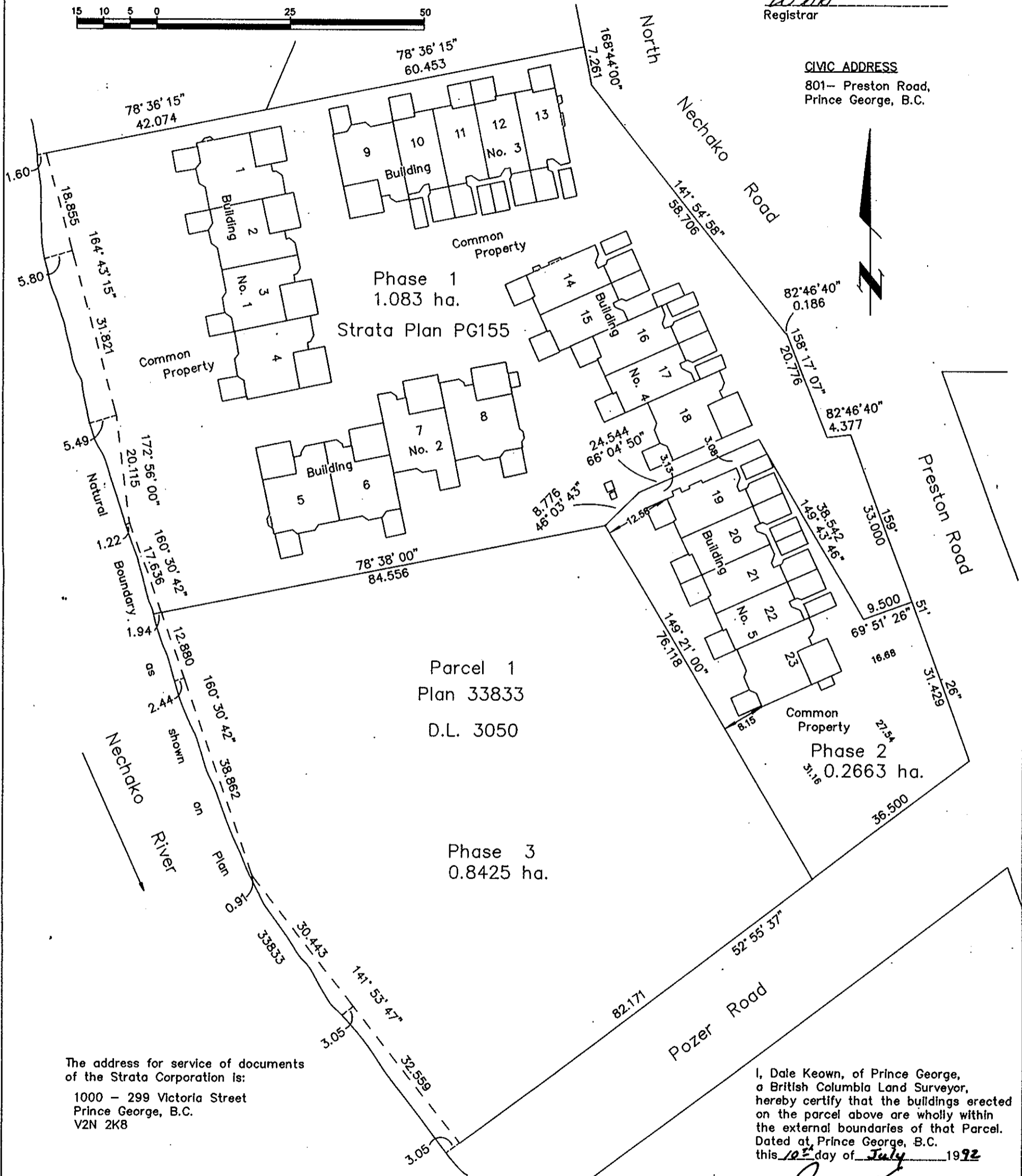
Scale: 1 : 750 (Distances are in metres)



W. J. B.
 Registrar

CIVIC ADDRESS

801- Preston Road,
 Prince George, B.C.



The address for service of documents
 of the Strata Corporation is:

1000 - 299 Victoria Street
 Prince George, B.C.
 V2N 2K8

LEGEND

- S.L. Denotes strata lot.
- pt Denotes part.
- Park Denotes open parking space.
- Deck Denotes open balcony space.

I, Dale Keown, of Prince George,
 a British Columbia Land Surveyor,
 hereby certify that the buildings erected
 on the parcel above are wholly within
 the external boundaries of that Parcel.
 Dated at Prince George, B.C.
 this 10th day of July 1992

Dale Keown
 Dale L. Keown, B.C.L.S

This plan lies within the Fraser-Fort
 George Regional District.

KILBRIDE SURVEYS		
British Columbia Land Surveyors		
Prince George, B.C.		
Ph: (604) 562-1196 Fax: 562-3656		
F.B.- TM 8	D.L.- 3050	REF. NO.- 92496