

PLAN OF REPOSTING OF BLOCKS 9-22, 39-52, 69-82,

99-112 AND 122-136, PLAN 752, DISTRICT LOTS 937A 938

CARIBOO DISTRICT.

SCALE 200 FEET = 1 INCH.

LEGEND.

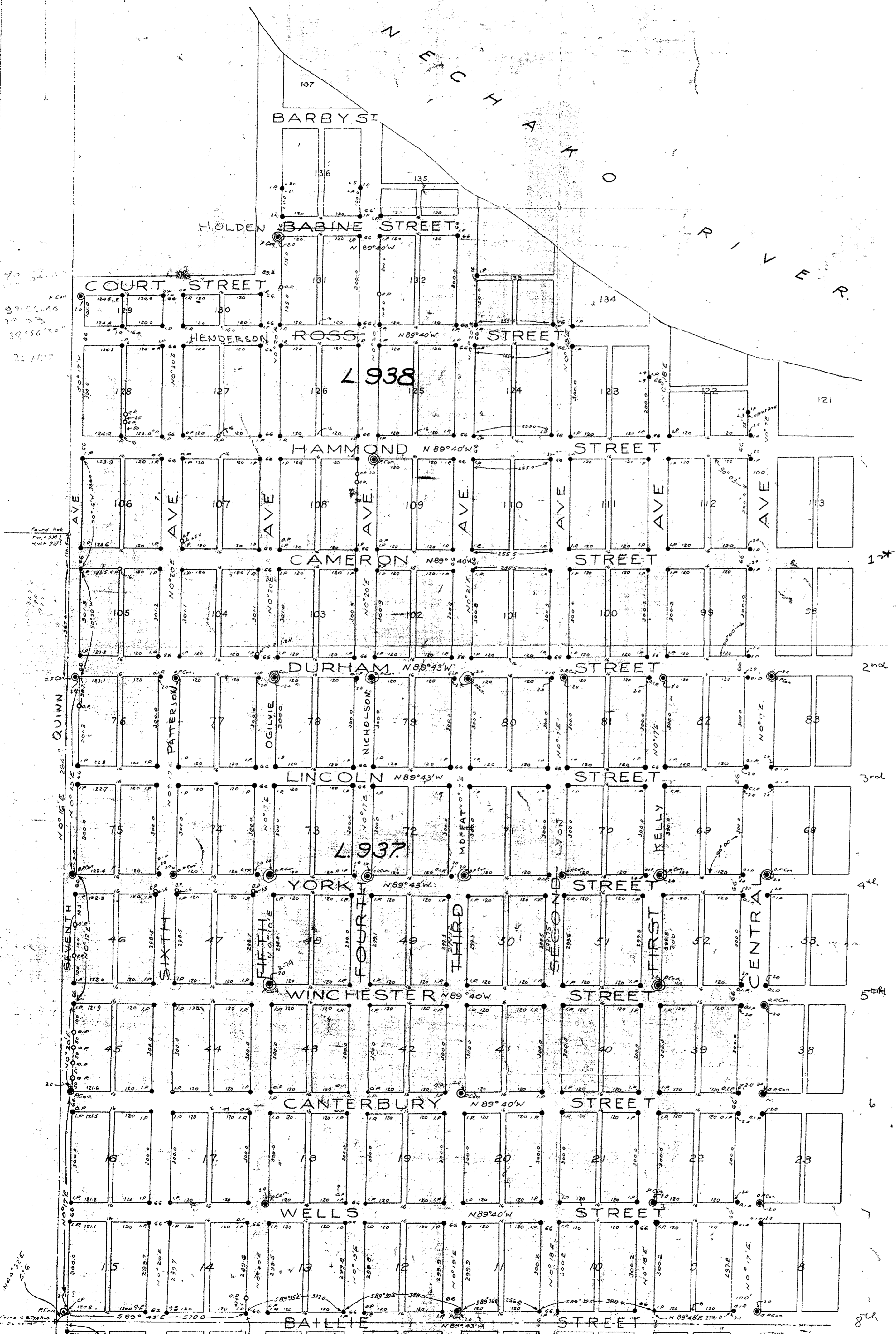
- P.C.M. indicates wooden post found.
  - P.C.M. indicates iron bar found.
  - P.C.M. indicates iron bar set.
  - C.C.M. indicates concrete post found.
  - C.C.M. indicates concrete post set.
- Bearings are astronomic and are derived from re-posting plan of York & Durban Sts by J.F. Campbell, B.C.L.S.

Plan No. M-286

Filed in the Land Registry Office, Kamloops B.C.

on the 17th of March, 1955

J.V. DiCastro  
Registrar



DL2507  
Plan 833

52°37'E 678  
105

Found at here 2 1/2 yds far south.  
disregard all same.

Plan 696

DL 936

77

64

63

8th