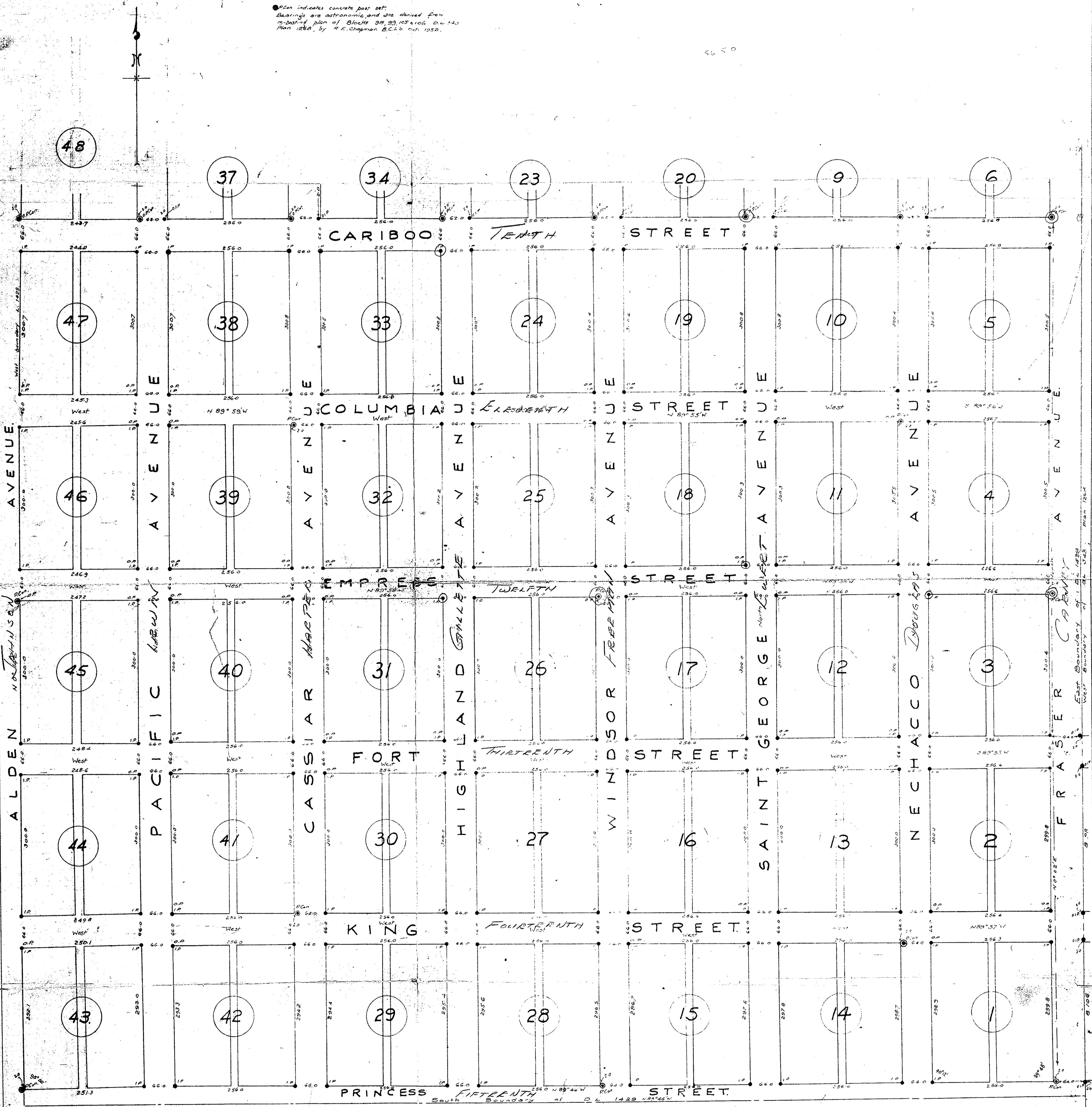


PLAN OF REPOSTING OF BLOCKS 1-5, 10-19,
 24-33 AND 38-47, PLAN 646, DISTRICT LOT 1429
 CARIBOO DISTRICT.
 SCALE 100 FEET = 1 INCH.

Plan No. M-257
 Deposited in the Land Registry Office
 Kamloops, B.C. the 22nd Sept. 1954
 a u Day
 Deputy Registrar

LEGEND
 ○ O.P. indicates wooden post found.
 ● O.I.P. indicates iron bar found.
 ● I.P. indicates iron bar set.
 ● C.P. indicates concrete post found.
 ● C.C. indicates concrete post set.
 Bearings are astronomic and are derived from
 a post-d plan of Blocks 29, 33, 105 & 106 D.L. 124,
 Plan 1280, by H.C. Chapman B.C.L.S. Oct. 1952.



Plan 606 D.L. 936

M257

Certified correct
 Philip W. Hunter B.C.L.S.
 8 March 1954