

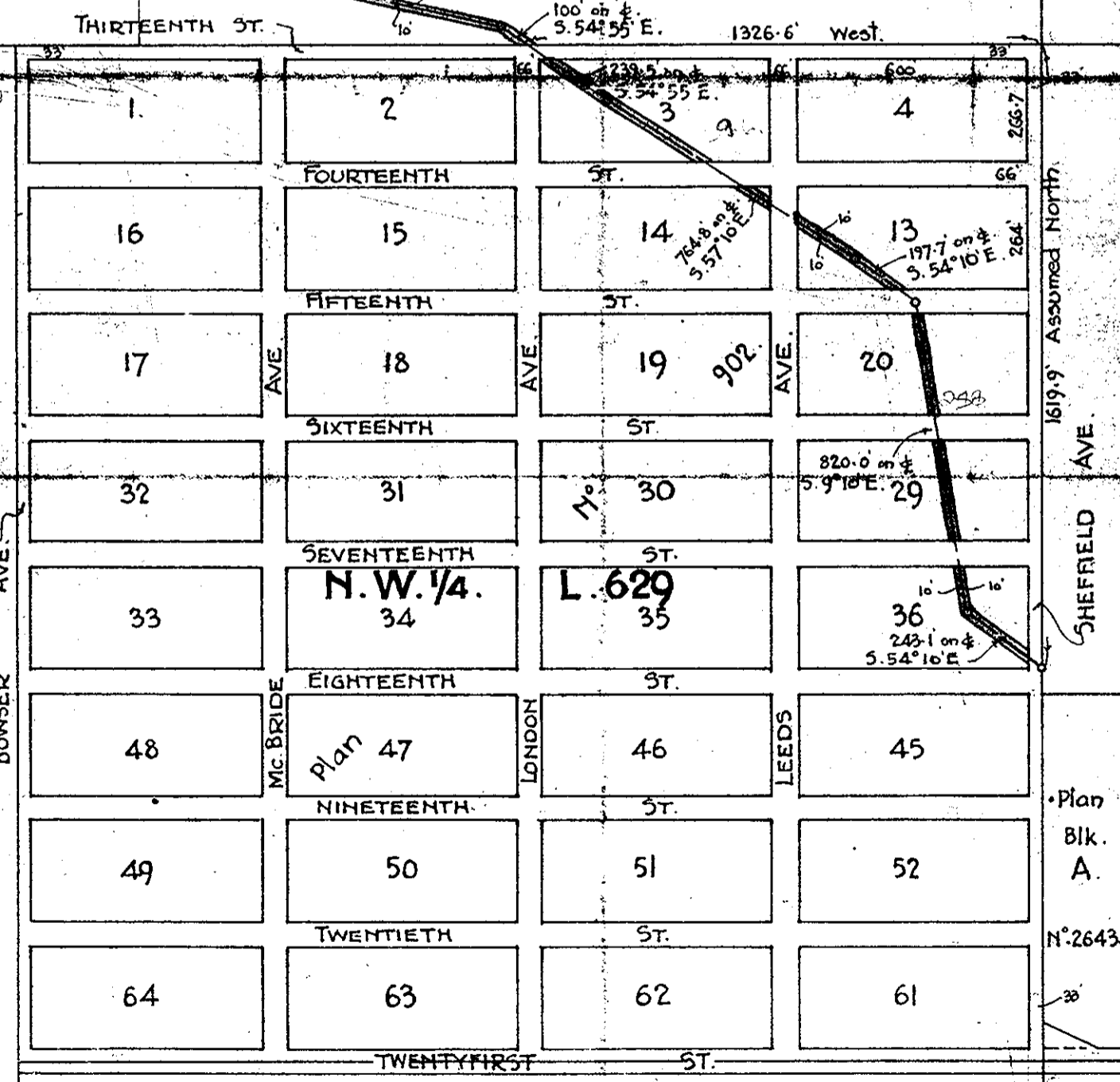
M-131

F R A S E R R I V E R

CANADIAN NATIONAL RAILWAYS  
Plan N° A. 202  
(GRAND TRUNK PACIFIC RLY.) MAIN LINE  
Plan N° A. 108.

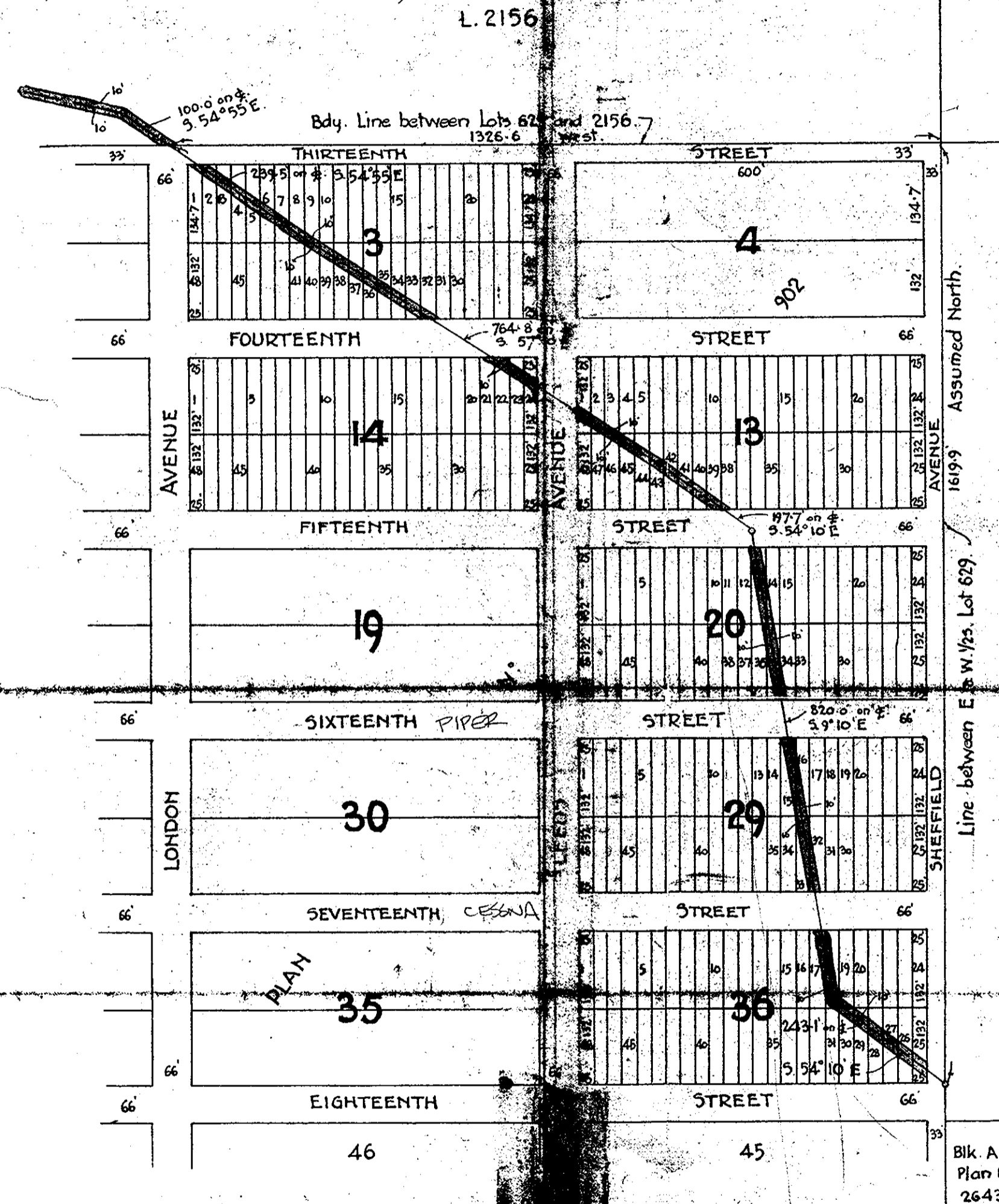
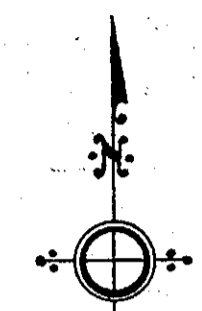
GROUP I. CARIBOO DISTRICT

L. 483 L. 2156 L. 2155  
L. 6970  
498.2' on E. 5.77° 25' E.  
1817.3' on E. 5.77° 25' E.  
879.4' on E. H. 80° 05' E.  
980.1' on E. H. 80° 05' E.  
2316.0' on E. 5.77° 25' E.  
100.0' on E. 5.54° 55' E. 1326.6' West.



L. 629

Parcel "A"  
Plan N° 902.

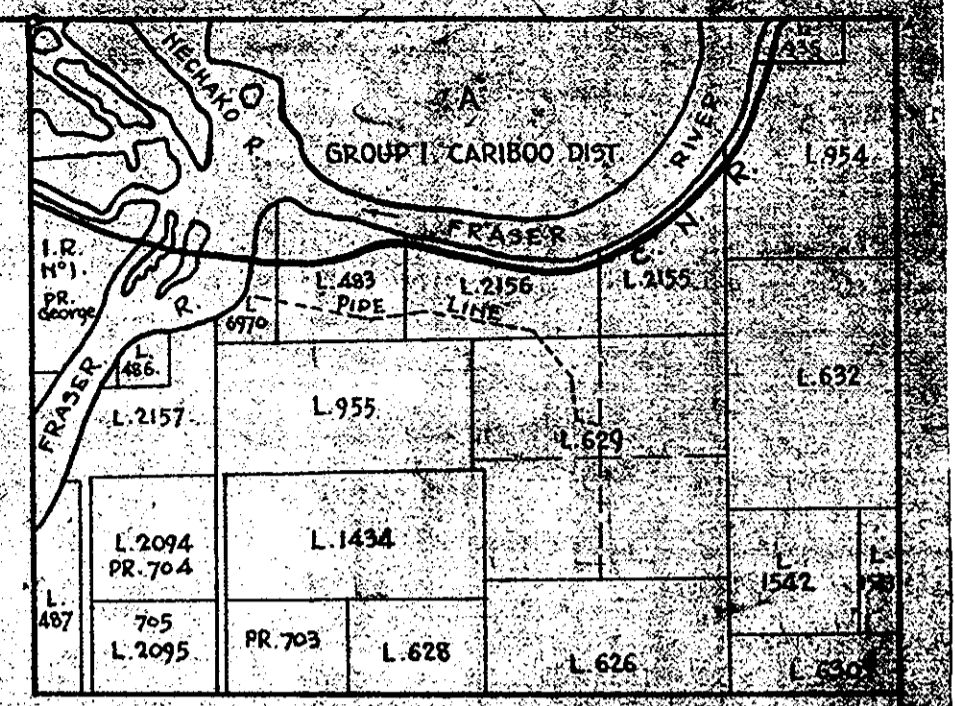


ENLARGED OF PIPE LINE THROUGH LOT 629. SCALE = 200 feet.

The Lands in which a limited estate is taken by His Majesty the King in the Right of the Dominion of Canada under this plan are shown hereon coloured pink and are more particularly described as follows:  
A strip of land 20 feet in perpendicular width over Lots 6970, 483 and 2156, Group I, Cariboo District in the Province of British Columbia, and a strip of land 20 feet in perpendicular width over those lots in Blocks 3, 13, 14, 20, 29 and 36 as same are shown on a plan of subdivision of part of Lot 629 in said District registered in the Land Registry Office in Kamloops no. N° 902. Under Authority of the provisions of Sub Section 2 of Section 9 of the Expropriation Act, Cap. 64, Revised Statutes of Canada 1957, the following limited estate in the said lands is taken by His Majesty the King in the Right of the Dominion of Canada, namely:  
The Right of His Majesty by His servants or agents to utilize the said lands for the purpose of constructing, maintaining and operating a water pipe line and facilities requisite to such use together with the right of all times of ingress, egress and regress upon, along or over the said lands for all purposes relating to the rights taken above.

TABLE OF LOTS IN PLAN N° 902 HEREBY AFFECTED

Lot N°	BLK. N°
1-10; 31-41, inc.	3.
14; 38-47 "	15.
21-24, inc.	14.
12, 14, 34-36, inc.	20.
15 and 16; 32-34 "	29.
17; 19; 25-31 "	36.



KEY PLAN  
SCALE: 1 inch = 4000 feet

*C. P. G. S.*  
Deputy Minister of Transport

M-131

DEPARTMENT OF TRANSPORT  
**Air Services Branch**  
EASEMENT REQUIRED FOR WATER PIPE LINE THROUGH LOTS 6970, 483 & 2156 AND BLOCKS 3, 13, 14, 20, 29 & 36 (Plan N° 902) IN PARCEL "A", LOT 629, GROUP I, CARIBOO DISTRICT  
**PRINCE GEORGE**  
BRITISH COLUMBIA  
Winnipeg, Man., August 25, 1953. Scale: 1 inch = 200 feet.