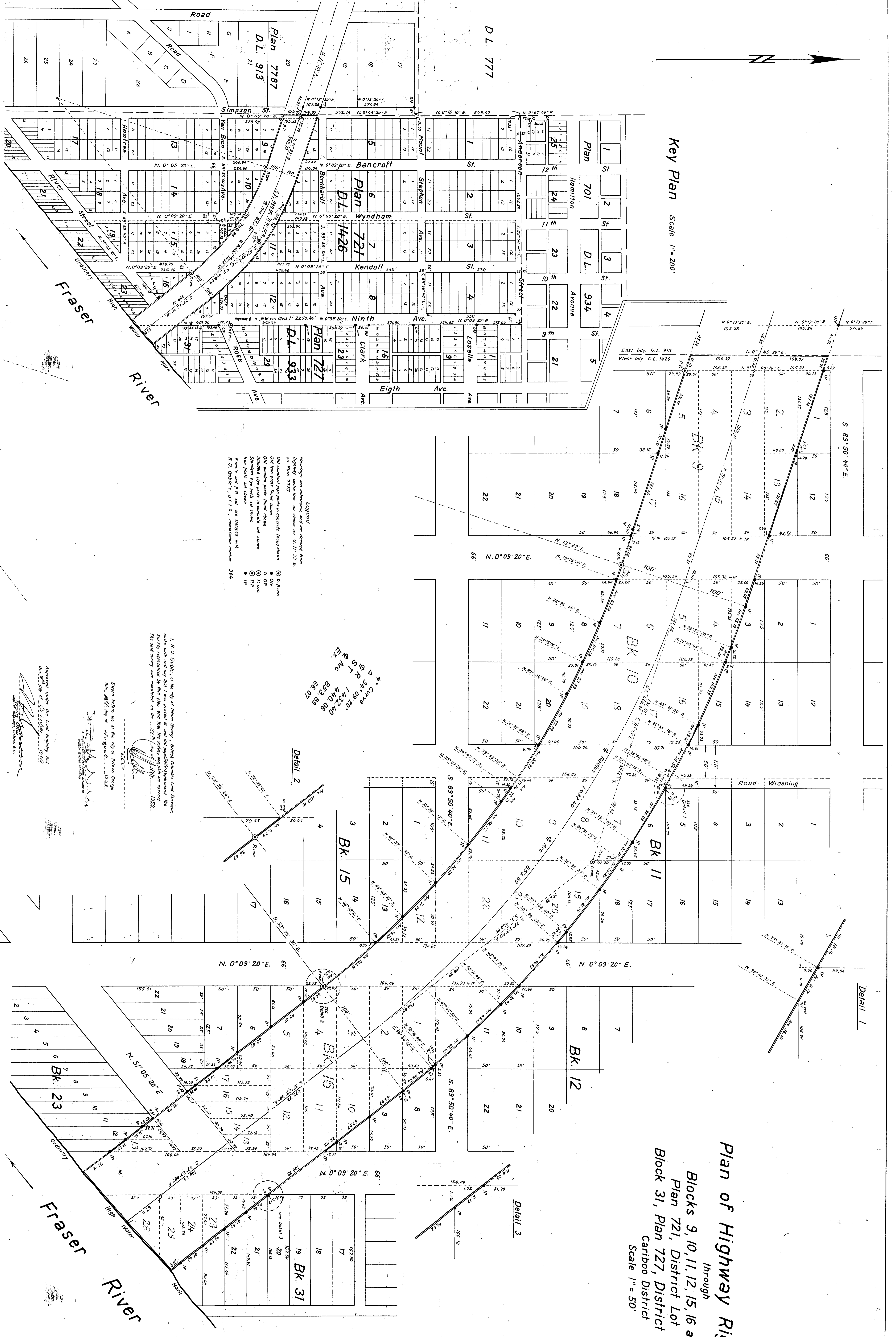


Plan of Highway Right-of-Way
 through
 Blocks 9, 10, 11, 12, 15, 16 and 23,
 Plan 721, District Lot 1426,
 Block 31, Plan 727, District Lot 933,
 Cariboo District
 Scale 1" = 50'

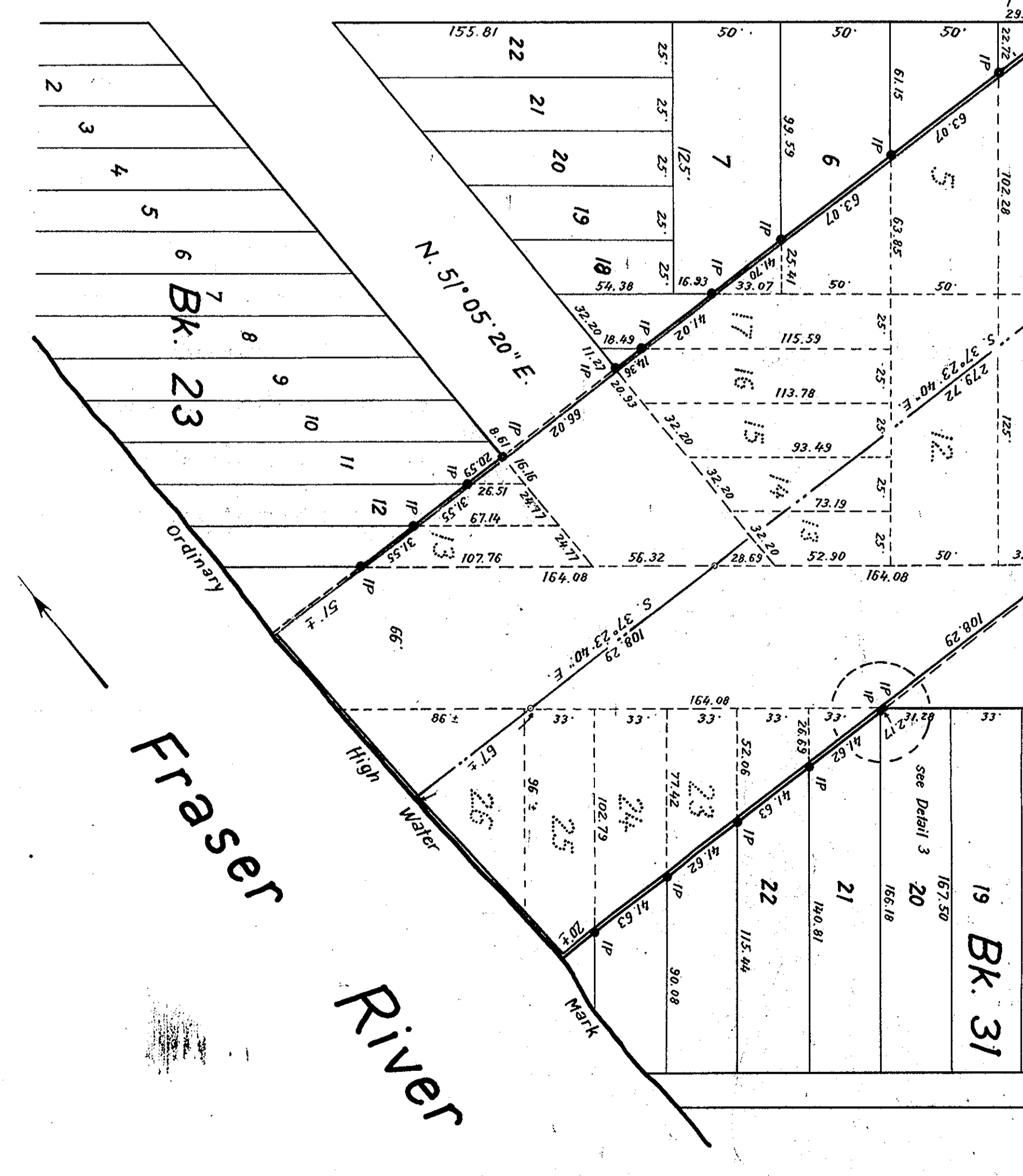
Book of Reference

Lot	Area	sq feet	Acres
Plan 721, District Lot 1426			
1	2,435	0.056	
2	6,248	0.143	
3	6,250	0.143	
4	6,335	0.145	
5	2,077	0.048	
6	3,518	0.081	
7	6,250	0.143	
8	6,250	0.143	
9	6,250	0.143	
10	6,250	0.143	
11	6,250	0.143	
12	6,250	0.143	
13	6,250	0.143	
14	6,250	0.143	
15	6,250	0.143	
16	6,250	0.143	
17	6,250	0.143	
18	6,250	0.143	
19	6,250	0.143	
20	6,250	0.143	
21	6,250	0.143	
22	6,250	0.143	
23	6,250	0.143	
24	6,250	0.143	
25	6,250	0.143	
26	6,250	0.143	
Plan 727, District Lot 933			
1	86,539	1.988	
2	335,089	7.687	



Legend
 Bearings are astronomic and are derived from
 Highway centre line as shown on S. 77-937 E.
 on Plan 7783
 Old road posts found shown
 New road posts found shown
 Standard fire posts set shown
 From posts set shown
 R. T. Goble's, B.C.L.S., commission number 384

1. R. T. Goble, of the City of Prince George, British Columbia Land Surveyors,
 make oath and say that I was present at and did personally supervise the
 survey represented by and on this plan and that the same was completed on the 27th day of July, 1988.
 The said survey was completed on the 27th day of July, 1988.



Approved under the Land Registry Act
 this 24th day of December, 1988
 [Signature]
 Registrar of Land Registry, British Columbia