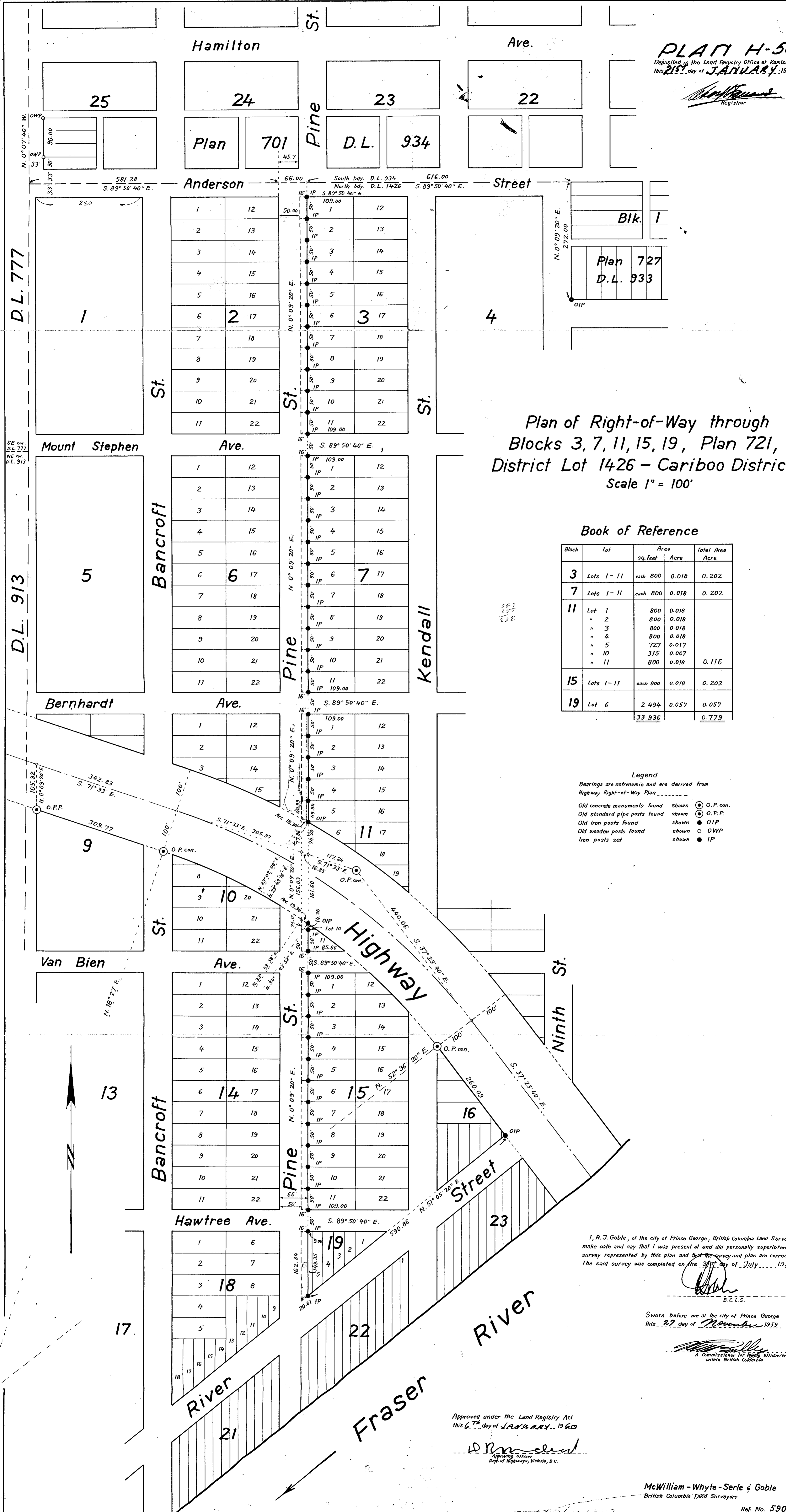


**PLAN H-58**  
 Deposited in the Land Registry Office at Kamloops  
 this 21<sup>st</sup> day of **JANUARY**, 1960  
*[Signature]*  
 Registrar



Plan of Right-of-Way through  
 Blocks 3, 7, 11, 15, 19, Plan 721,  
 District Lot 1426 - Cariboo District  
 Scale 1" = 100'

**Book of Reference**

Block	Lot	Area		Total Area
		sq. feet	Acres	
3	Lots 1-11	each 800	0.018	0.202
7	Lots 1-11	each 800	0.018	0.202
11	Lot 1	800	0.018	0.116
	" 2	800	0.018	
	" 3	800	0.018	
	" 4	800	0.018	
	" 5	727	0.017	
	" 10	315	0.007	
	" 11	800	0.018	
15	Lots 1-11	each 800	0.018	0.202
19	Lot 6	2 494	0.057	0.057
		<b>33 936</b>		<b>0.779</b>

**Legend**  
 Bearings are astronomic and are derived from  
 Highway Right-of-Way Plan

- Old concrete monuments found shown ○ O.P. con.
- Old standard pipe posts found shown ⊙ O.P.P.
- Old iron posts found shown ● OIP
- Old wooden posts found shown ○ DWP
- Iron posts set shown ● IP

I, R.J. Goble, of the city of Prince George, British Columbia Land Surveyor  
 make oath and say that I was present at and did personally superintend the  
 survey represented by this plan and that the survey and plan are correct.  
 The said survey was completed on the 31<sup>st</sup> day of July, 1959.

Sworn before me at the city of Prince George  
 this 27<sup>th</sup> day of November 1959.

Approved under the Land Registry Act  
 this 6<sup>th</sup> day of JANUARY, 1960  
*[Signature]*  
 Deputy Registrar  
 Dept. of Highways, Victoria, B.C.

McWilliam - Whyte - Serle & Goble  
 British Columbia Land Surveyors