

PLOTTED (HN) (HM)

PLAN No. H-429

**PLAN OF THE NECHAKO RIVER BRIDGE SITE AND OF THE RIGHT OF WAY IN PART OF LOTS 937 AND 938 FOR THE PRINCE GEORGE BY-PASS HIGHWAY, CARIBOO DISTRICT BRITISH COLUMBIA.**

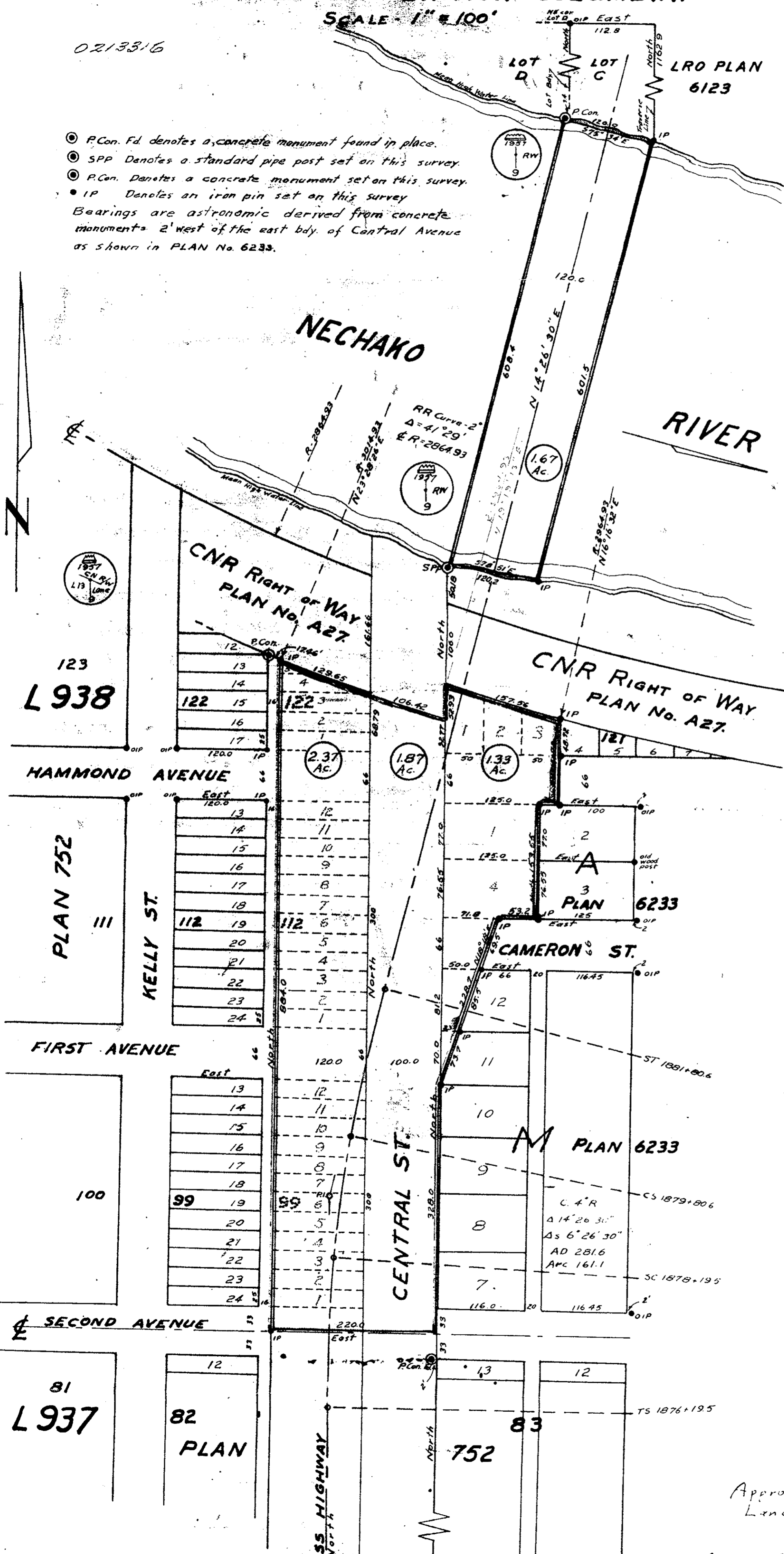
Deposited in the Land Registry Office at Kamloops this 5th day of Dec 1957  
*J. V. ...*  
 Registrar

0213316

SCALE 1" = 100'

D. LOT	PLAN	BLOCK	LOT	AREA
938	6233	M	11	0.037 Ac
			12	0.069 Ac
	6233	A	1	0.222 Ac
			4	0.220 Ac
	752	121	1	0.09 Ac
			2	0.08 Ac
			3	0.06 Ac
	752	122	1	0.069 Ac
			2	0.069 Ac
			3	0.068 Ac
			4	0.04 Ac
			5	0.009 Ac
937	752	112	1	0.069 Ac
			2	0.069 Ac
938	752	112	3	0.069 Ac
			4	0.069 Ac
			5	0.069 Ac
			6	0.069 Ac
			7	0.069 Ac
			8	0.069 Ac
			9	0.069 Ac
			10	0.069 Ac
			11	0.069 Ac
			12	0.069 Ac
937	752	99	1	0.069 Ac
			2	0.069 Ac
			3	0.069 Ac
			4	0.069 Ac
			5	0.069 Ac
			6	0.069 Ac
			7	0.069 Ac
			8	0.069 Ac
			9	0.069 Ac
			10	0.069 Ac
			11	0.069 Ac
			12	0.069 Ac

- ⊙ P.Con. Fd. denotes a concrete monument found in place.
  - ⊙ SPP Denotes a standard pipe post set on this survey.
  - ⊙ P.Con. Denotes a concrete monument set on this survey.
  - ⊙ IP Denotes an iron pin set on this survey.
- Bearings are astronomic derived from concrete monuments 2' west of the east bdy. of Central Avenue as shown in PLAN No. 6233.



Approved under the Land Registry Act  
 26 November 1957  
*J. V. ...*