

**REFERENCE PLAN OF ROAD DEDICATION OVER PART OF  
BLOCK B, DISTRICT LOT 748, CARIBOO DISTRICT.**

**PLAN EPP6472**

BCGS 93G.087

PURSUANT TO SECTION 107 OF THE LAND TITLE ACT.

THIS PLAN LIES WITHIN INTEGRATED SURVEY  
AREA No. 39, PRINCE GEORGE, NADB3 (CSRS)

THE INTENDED PLOT SIZE OF THIS PLAN IS 864mm IN WIDTH BY  
560mm IN HEIGHT (D SIZE) WHEN PLOTTED AT A SCALE OF 1:1250



ALL DISTANCES ARE SHOWN IN METRES AND  
DECIMALS THEREOF, UNLESS OTHERWISE INDICATED.

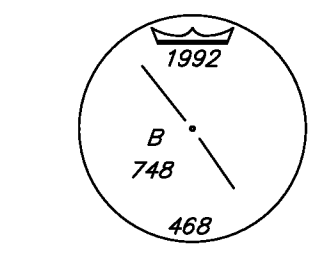
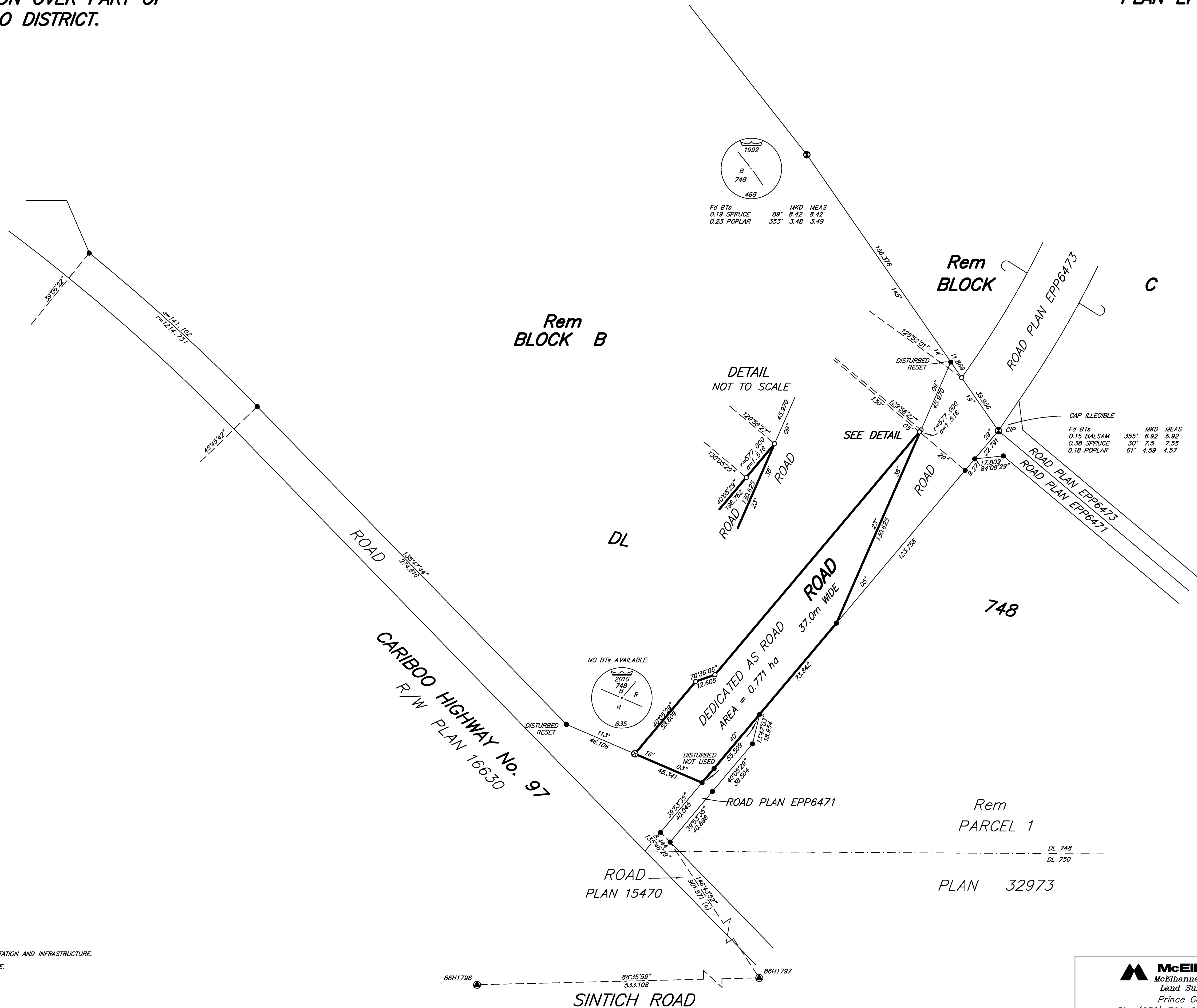
**LEGEND**

GRID BEARINGS ARE DERIVED FROM OBSERVATIONS  
BETWEEN CONTROL MONUMENTS 86H1797 AND 86H1796.

- ⊙ DENOTES CONTROL MONUMENT FOUND
- DENOTES STANDARD IRON POST FOUND
- DENOTES STANDARD IRON POST PLACED
- ⊙ DENOTES STANDARD CAPPED POST FOUND
- ⊙ DENOTES STANDARD CAPPED POST PLACED

THIS PLAN SHOWS HORIZONTAL GROUND-LEVEL DISTANCES EXCEPT  
WHERE OTHERWISE NOTED. TO COMPUTE GRID DISTANCES, MULTIPLY  
GROUND-LEVEL DISTANCES BY COMBINED FACTOR 0.9995026.

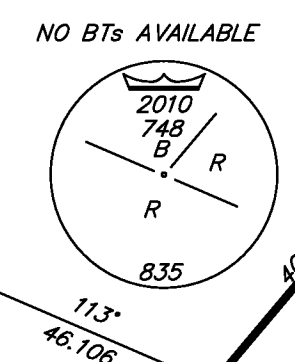
BEARINGS TO BEARING TREES ARE MAGNETIC



Fd BTs	MKD	MEAS
0.18 SPRUCE	89°	8.42 8.42
0.23 POPLAR	353°	3.48 3.49

CAP ILLEGIBLE

Fd BTs	MKD	MEAS
0.15 BALSAM	355°	6.92 6.92
0.38 SPRUCE	30°	7.5 7.55
0.18 POPLAR	61°	4.59 4.57



NO BTs AVAILABLE

THIS PLAN LIES WITHIN THE JURISDICTION OF THE APPROVING OFFICER FOR THE MINISTRY OF TRANSPORTATION AND INFRASTRUCTURE.

THIS PLAN LIES WITHIN THE JURISDICTION OF THE APPROVING OFFICER FOR THE CITY OF PRINCE GEORGE.

THE FIELD SURVEY REPRESENTED BY THIS PLAN  
WAS COMPLETED BY DAVID E. STORBACK, BCLS  
ON THE 22nd DAY OF MARCH, 2010.

THIS PLAN LIES WITHIN THE REGIONAL DISTRICT OF FRASER - FORT GEORGE.

**McElhanney**  
McElhanney Associates  
Land Surveying Ltd.  
Prince George, B.C.  
Ph: (250) 561-2229 Fax: 563-1941

D.L.- 748	File No. - 5793	DWG	RD2
-----------	-----------------	-----	-----