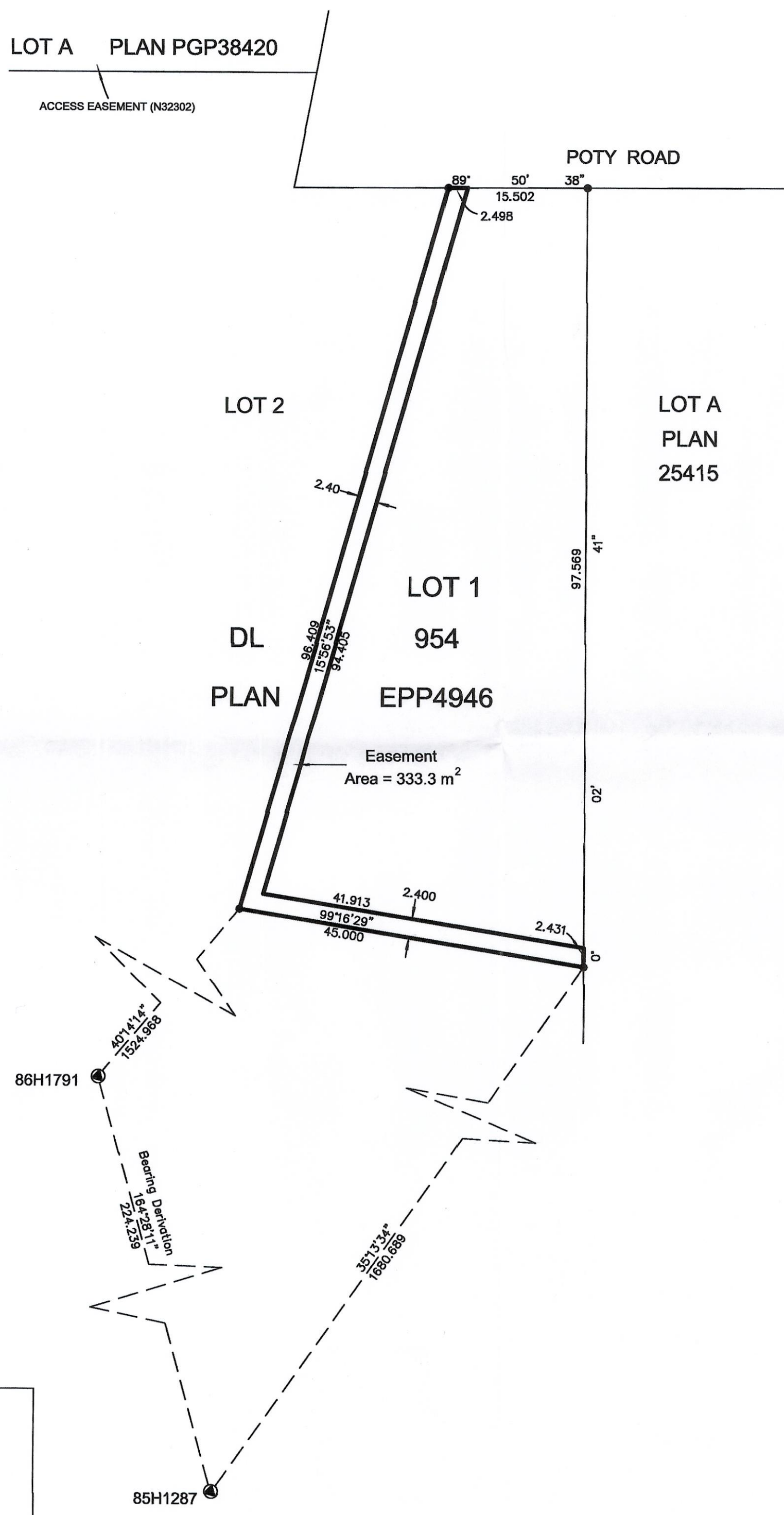


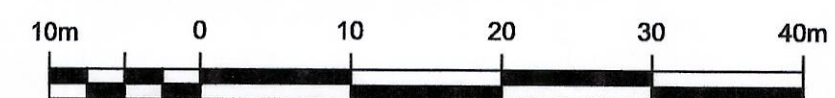
EPP10512



**REFERENCE PLAN OF
EASEMENT OVER PART OF
LOT 1, DL 954, CARIBOO
DISTRICT, PLAN EPP4946**

BCGS 93G.097

Pursuant to Section 99 of the Land Title Act



All distances are in metres

The intended plot size of this plan is 560 mm in width
by 432mm in height when plotted at scale 1:500
(use C size sheet)

LEGEND

Grid bearings are derived from observations
between control monuments 86H1791 and 85H1287
Integrated Survey Area Number 39, City of
Prince George, NAD 83(CSRS)
This plan shows ground-level measured distances
Prior to computation of UTM coordinates
multiply by combined factor of 0.9995002

- Standard Iron Post Found
- ⊙ Denotes Control Monument

This plan lies within the Regional District of Fraser-Fort George

The field survey represented by this plan
was completed by Richard E. Gook, BCLS
on the 9th day of November, 2009

R.E. GOOK & ASSOCIATES
B.C. & CANADA LAND SURVEYORS
886 VANCOUVER STREET
PRINCE GEORGE, B.C. V2L 2P5
PHONE: 250-564-4242
FAX: 250-564-5343
FILE: 09-0583PG-1
regook@northernsurveys.com