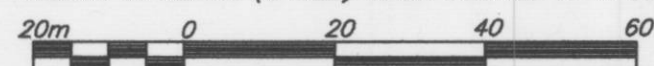


REFERENCE PLAN OF STATUTORY RIGHT OF WAY OVER PART OF LOTS 1 AND 2, DISTRICT LOT 4047, CARIBOO DISTRICT, PLAN PGP42458.

BCGS 93G.097

PURSUANT TO SECTION 113 OF THE LAND TITLE ACT.

THE INTENDED PLOT SIZE OF THIS PLAN IS 560mm IN WIDTH BY 432mm IN HEIGHT (C SIZE) WHEN PLOTTED AT A SCALE OF 1:1000



ALL DISTANCES ARE GROUND LEVEL AND SHOWN IN METRES AND DECIMALS THEREOF, UNLESS OTHERWISE INDICATED.

BOOK OF REFERENCE	
DESCRIPTION	AREA
LOT 1, DL 4047, PLAN PGP42458	438.9m ²
LOT 2, DL 4047, PLAN PGP42458	527.6m ²
TOTAL AREA	966.5m ²



LEGEND

- DENOTES STANDARD IRON POST FOUND
- DENOTES STANDARD IRON POST PLACED
- ⊙ DENOTES CONTROL MONUMENT FOUND

THIS PLAN LIES WITHIN INTEGRATED SURVEY AREA No. 39, CITY OF PRINCE GEORGE, NADB3 (CSRS).

GRID BEARINGS ARE DERIVED FROM OBSERVATIONS BETWEEN GEODETIC CONTROL MONUMENTS 86H1654 AND 86H1621.

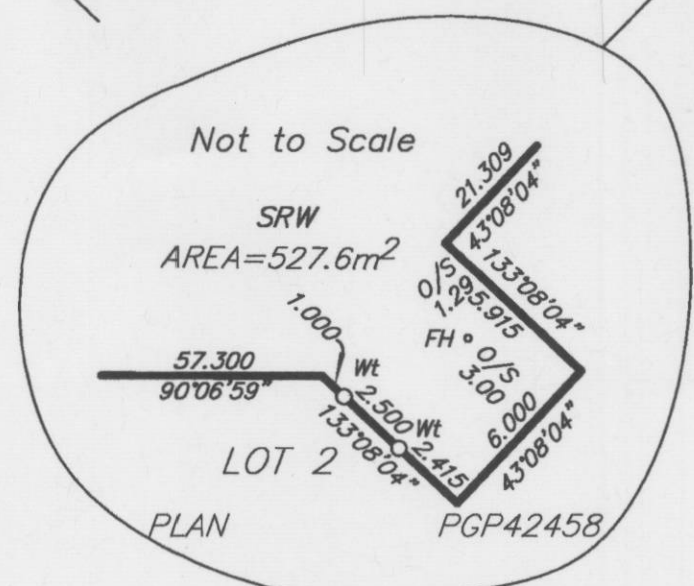
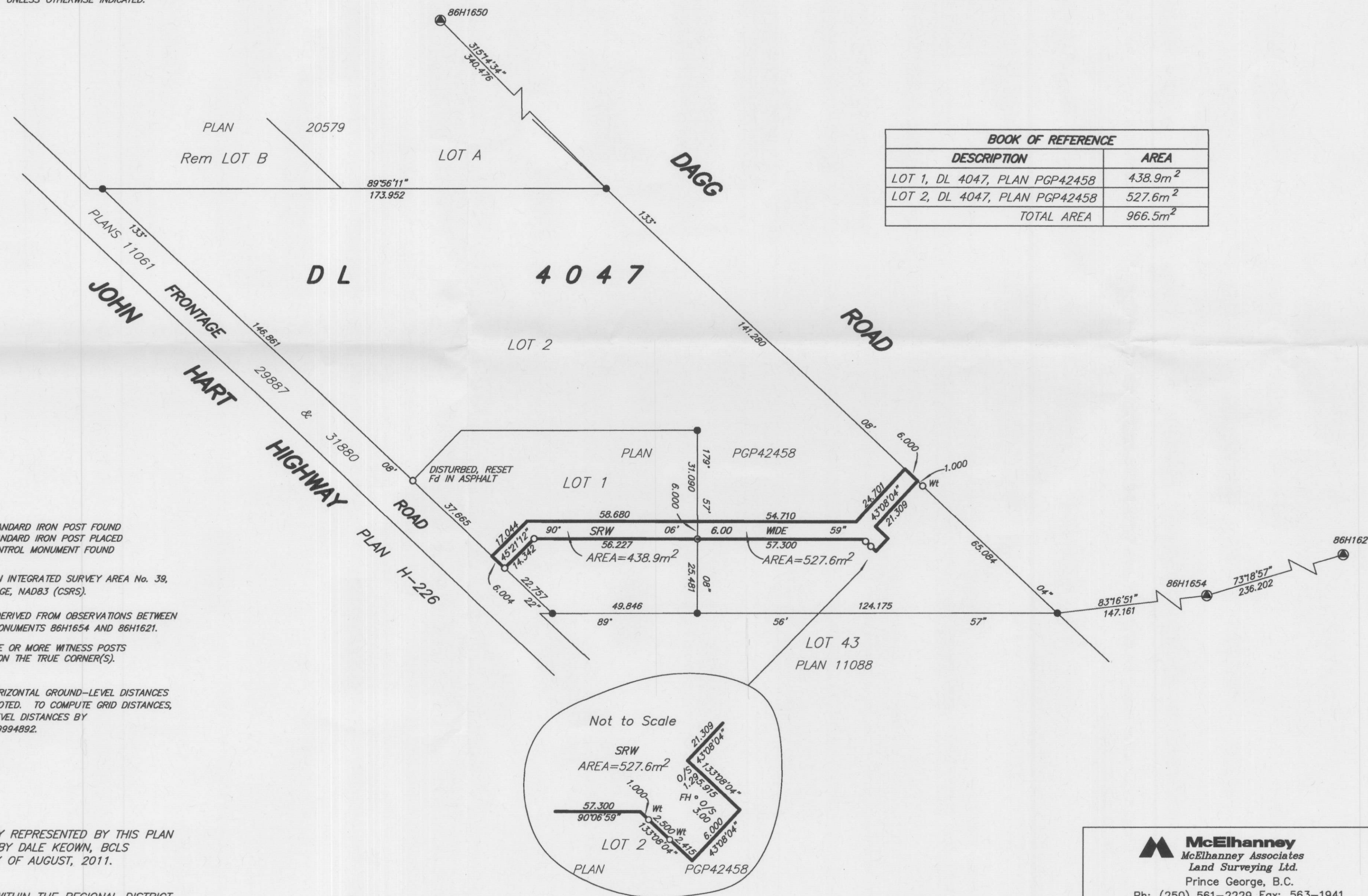
THIS PLAN SHOWS ONE OR MORE WITNESS POSTS WHICH ARE NOT SET ON THE TRUE CORNER(S).

NOTE:

THIS PLAN SHOWS HORIZONTAL GROUND-LEVEL DISTANCES EXCEPT OTHERWISE NOTED. TO COMPUTE GRID DISTANCES, MULTIPLY GROUND-LEVEL DISTANCES BY COMBINED FACTOR 0.9994892.

THE FIELD SURVEY REPRESENTED BY THIS PLAN WAS COMPLETED BY DALE KEOWN, BCLS ON THE 10th DAY OF AUGUST, 2011.

THIS PLAN LIES WITHIN THE REGIONAL DISTRICT OF FRASER - FORT GEORGE.



McElhanney
 McElhanney Associates
 Land Surveying Ltd.
 Prince George, B.C.
 Ph: (250) 561-2229 Fax: 563-1941

DL - 4047	FILE No. 5865 RW
-----------	------------------