

PLAN EPP10089

EXPLANATORY PLAN OF EASEMENT OVER PARTS OF LOTS A AND B, DL 2014, CARIBOO DISTRICT, PLAN EPP6077.

BCGS 93G.087

PURSUANT TO SECTION 99(1)(e) OF THE LAND TITLE ACT.

THIS PLAN LIES WITHIN INTEGRATED SURVEY AREA No. 39, PRINCE GEORGE, NAD83 (CSRS).

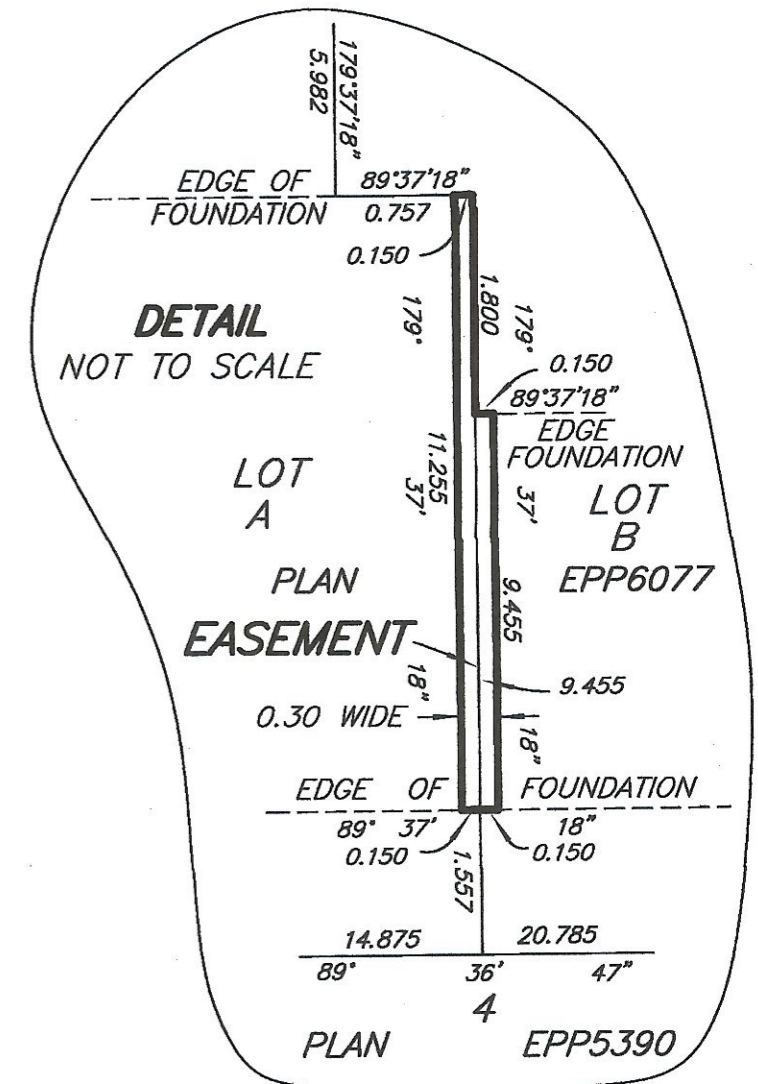
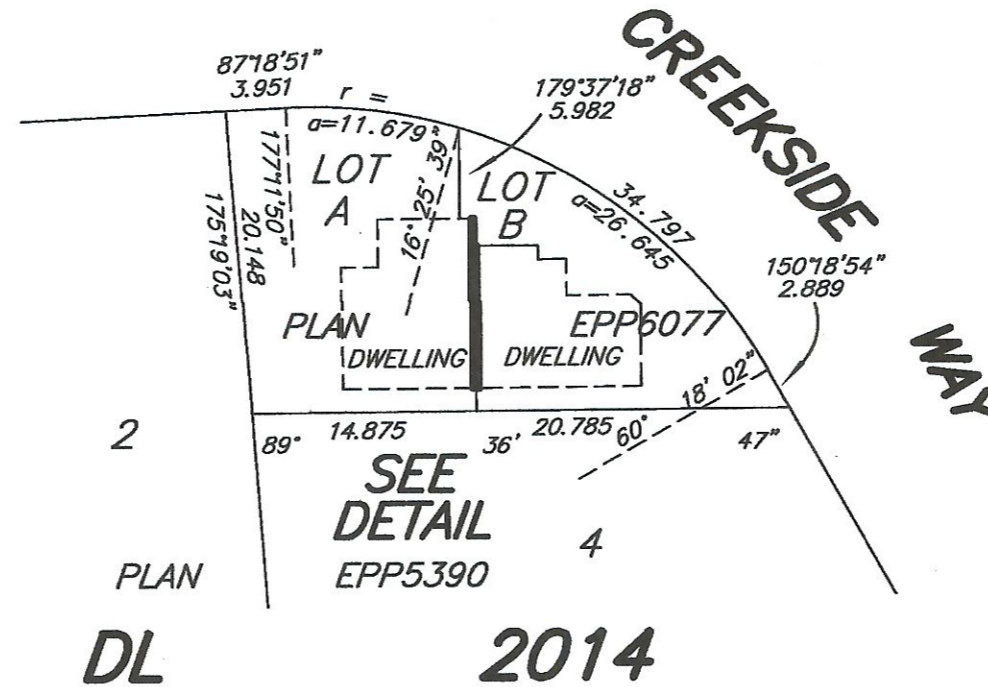
THE INTENDED PLOT SIZE OF THIS PLAN IS 432mm IN WIDTH BY 280mm IN HEIGHT (B SIZE) WHEN PLOTTED AT A SCALE OF 1:500



ALL DISTANCES ARE SHOWN IN METRES AND DECIMALS THEREOF, UNLESS OTHERWISE INDICATED.

LEGEND

GRID BEARINGS ARE DERIVED FROM PREVIOUSLY INTEGRATED PLAN EPP6077.



BOOK OF REFERENCE	
DESCRIPTION	AREA
LOT A, DL 2014, CARIBOO DISTRICT, PLAN EPP6077	1.7m ²
LOT B, DL 2014, CARIBOO DISTRICT, PLAN EPP6077	1.4m ²
TOTAL	3.1m ²

THIS PLAN IS BASED ON THE FOLLOWING LAND TITLE AND SURVEY AUTHORITY OF BC RECORDS: EPP6077 DAVID E. STORBACK, BCLS

THIS PLAN LIES WITHIN THE REGIONAL DISTRICT OF FRASER - FORT GEORGE

McElhanney
McElhanney Associates
Land Surveying Ltd.
Prince George, B.C.

E-mail: pgmals@mcElhanney.com
Ph: (250) 561-2229 Fax: (250) 563-1941

DL - 2014

FILE No. - 5861-PW