

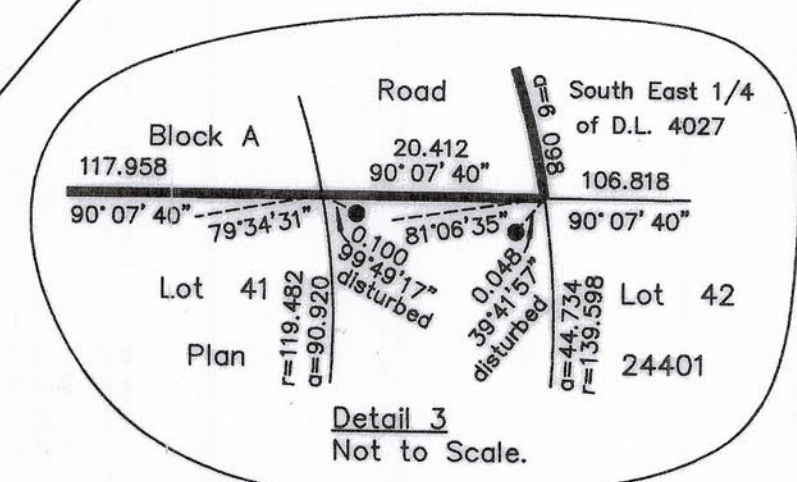
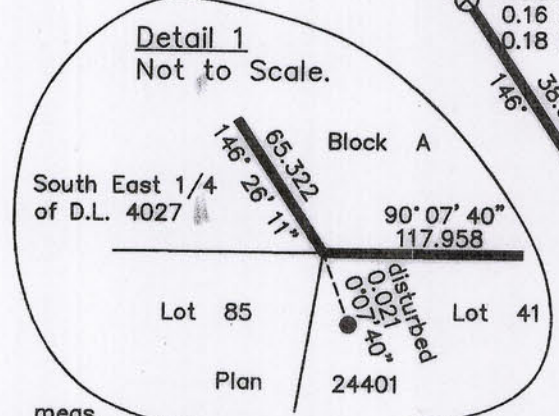
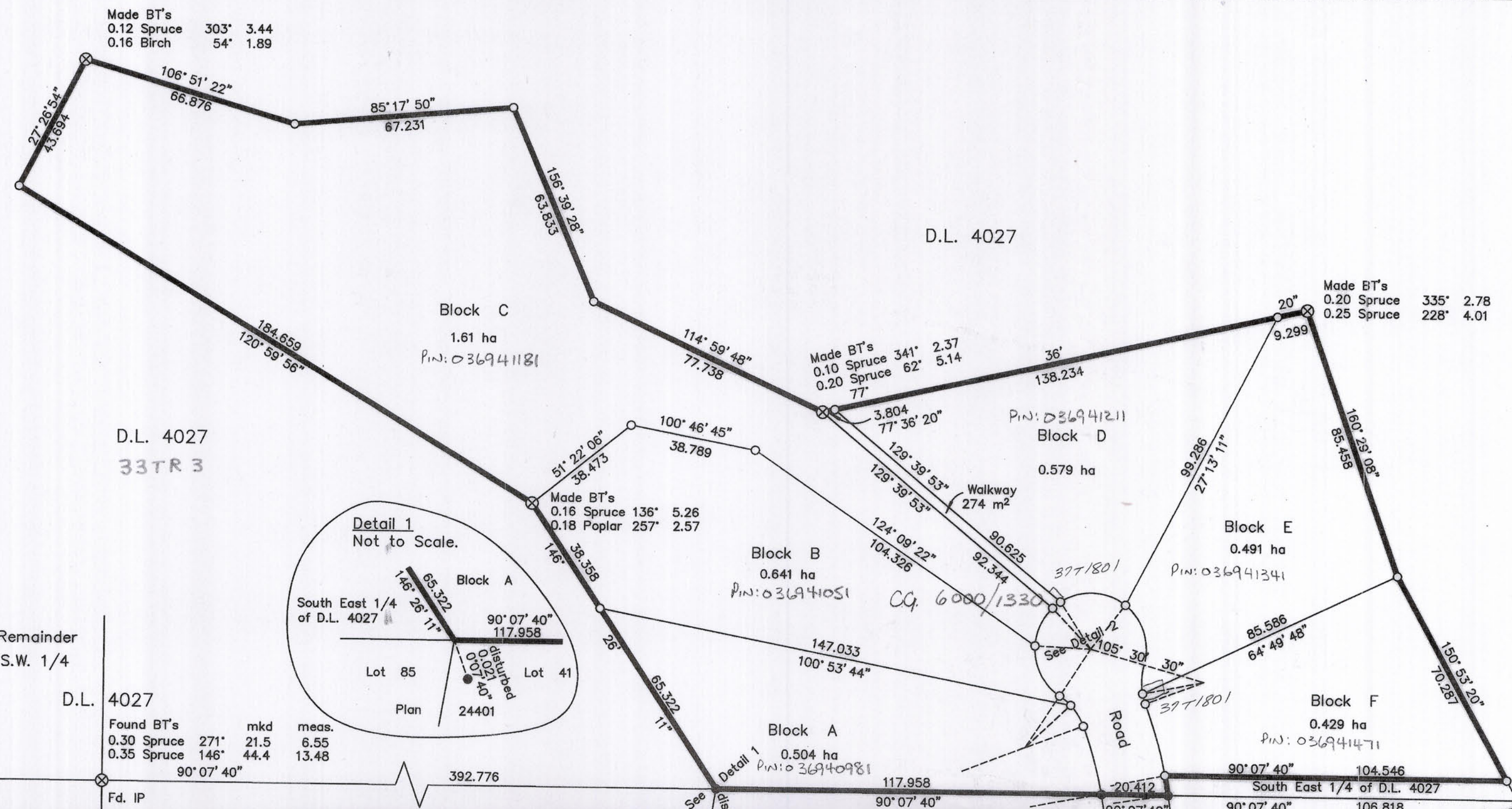
1081-81

1081-81

TRUE COPY DEPOSITED
 IN Prince George L.R.O.
 Bks. A, B, C, D, E AND F OF
 D.L. 4027, Cariboo District
 ASSIGNED No. PGP43335

SURVEY PLAN OF
 BLOCKS A TO F
 INCLUSIVE, DISTRICT
 LOT 4027,
 CARIBOO DISTRICT.
 B.C.G.S. 93G.097

Scale: 1 : 1250
 7406969



LEGEND

Bearings are astronomic and are derived from Plan 24401.

All distances are in metres and decimals thereof unless otherwise indicated.

Bearings to bearing trees are magnetic.

⊗ Standard Capped Post Placed
 ● Standard Iron Post Found
 ○ Standard Iron Post Placed

I, Dale L. Keown, a British Columbia Land Surveyor of Prince George in British Columbia, certify that I was present at and personally supervised the survey represented by this plan and that the survey and plan are correct. The survey was completed on the 23rd day of September, 1998.

Dale Keown
 Dale L. Keown, B.C.L.S.

This plan lies within the Fraser-Fort George Regional District.

KILBRIDE LAND SURVEYING LTD.
 British Columbia Land Surveyors
 Prince George, B.C.
 Ph: (250) 562-1196 Fax: 562-3656

F.B.- RA D.L.- 4027 FILE No. 980295

OFFICIAL PLAN
 CONFIRMED UNDER SECTION 72
 LAND ACT

Dale Keown
 Surveyor General
 Victoria, B.C. OCTOBER 15, 1998

FB 158/98

1081-81

1081-81