

Plans

SURVEY PLAN OF
LOT 255
CARIBOO DISTRICT - BRITISH COLUMBIA

PLAN
255

SCALE: 1" = 100'

Bearings are astronomic, derived from the South Boundary of Parcel C, Plan B 5978 as shown on plan 5965.

Distances are in feet.

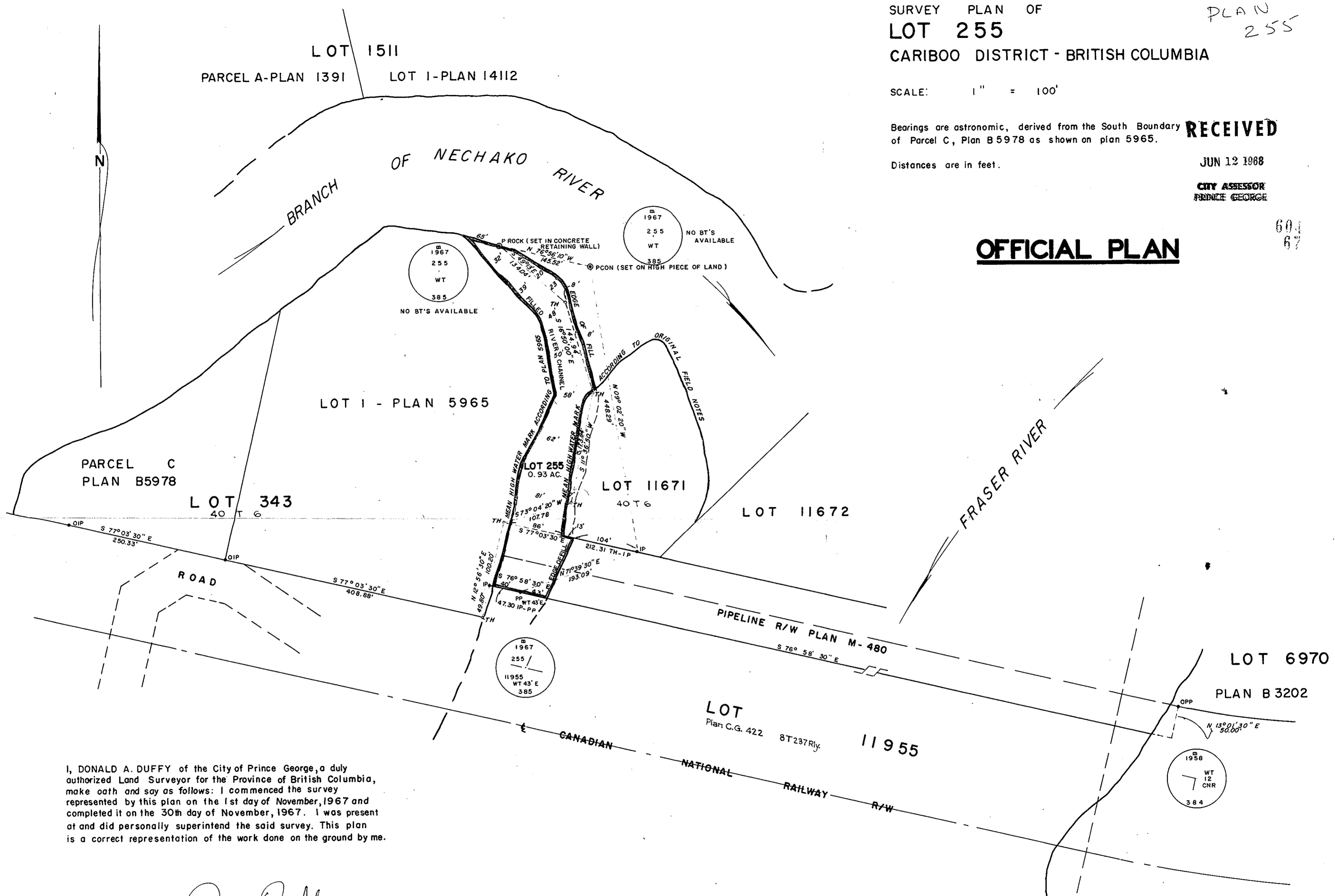
RECEIVED

JUN 12 1968

CITY ASSESSOR
PRINCE GEORGE

604
67

OFFICIAL PLAN



I, DONALD A. DUFFY of the City of Prince George, a duly authorized Land Surveyor for the Province of British Columbia, make oath and say as follows: I commenced the survey represented by this plan on the 1st day of November, 1967 and completed it on the 30th day of November, 1967. I was present at and did personally superintend the said survey. This plan is a correct representation of the work done on the ground by me.

Donald A. Duffy
B.C.L.S.

Sworn before me this 4TH
day of DEC., 1967.

[Signature]
A Commissioner for taking Affidavits
in British Columbia.

W.D. USHER & ASSOCIATES
LAND SURVEYORS
PRINCE GEORGE - BC.
CA 27 2360

77932