

Plotted (L.K.) (LL)

Plan No CG 839

Deposited in the Land Registry Office at Kamloops B.C. this 30th day of JANUARY 1961.

[Signature]
REGISTRAR

Plan of
Transmission Line Right-of-Way (Easement)
through District Lot 955, Cariboo District.

Scale: 1" = 400'

LEGEND:

- O.I.P. denotes old iron post found
- I.P. " " iron post set

Bearings are astronomic, derived from solar observations and referred to the Meridian through S.W. Corner D.L. 2094.

I, E.A. Rothery of Sidney, British Columbia Land Surveyor, make oath and say that I was present at and did personally superintend the survey represented by this plan and that the survey and plan are correct. The said survey was completed on the 12th day of September 1960.

[Signature]
B.C.L.S.

Sworn before me at PORT ALBERN this 7th day of September 1961.

BRITISH COLUMBIA POWER COMMISSION

[Signature] COMMISSIONER

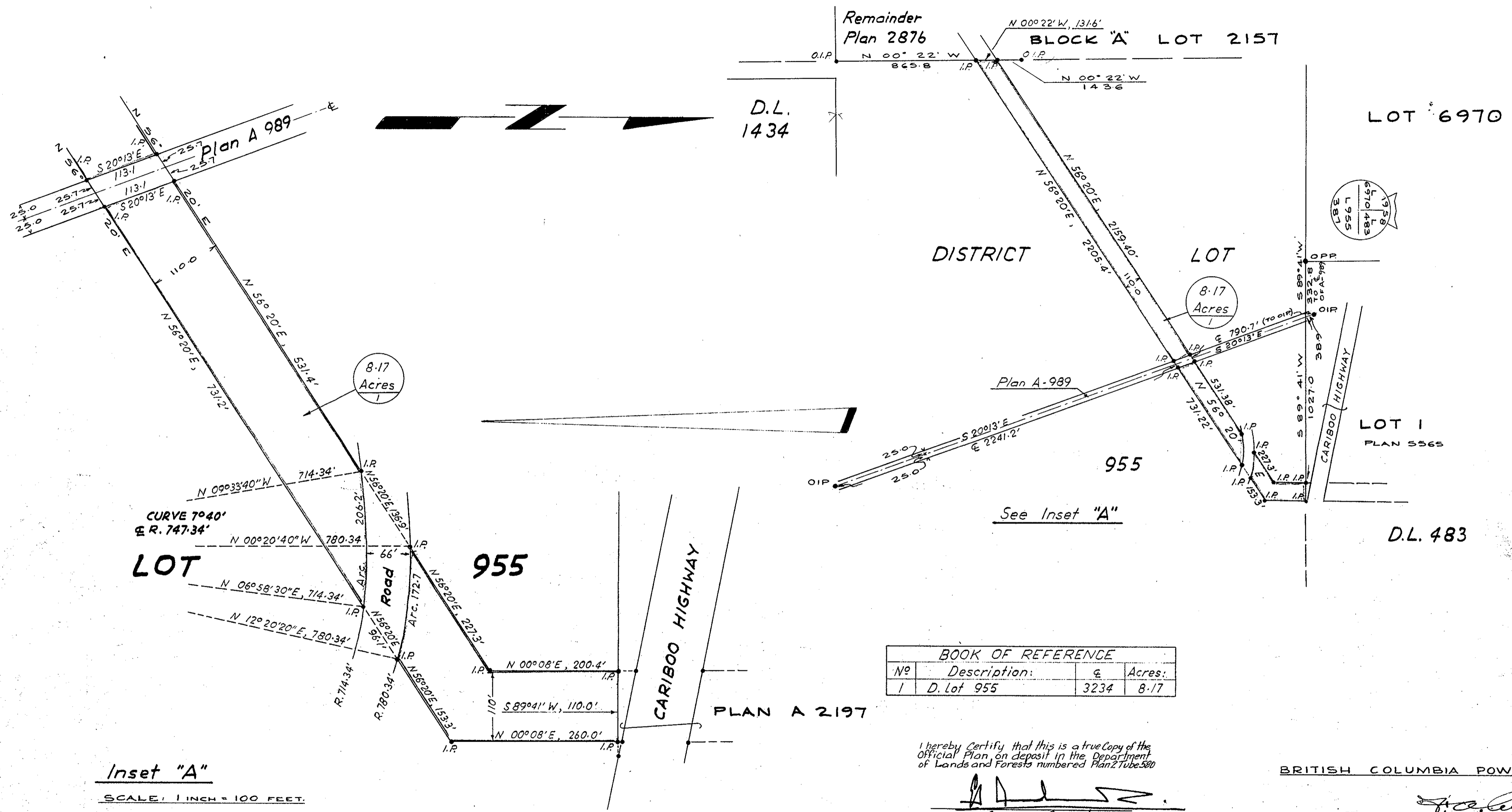
[Signature] SECRETARY

A Commissioner for taking Affidavits in the Province of British Columbia.

BOOK OF REFERENCE			
No	Description:	sq	Acres:
1	D. Lot 955	3234	8.17

I hereby certify that this is a true copy of the Official Plan, on deposit in the Department of Lands and Forests numbered Plan 2 Tube 590

[Signature]
Surveyor General
Victoria, B.C. 24th Jan 1962



Inset "A"
SCALE: 1 INCH = 100 FEET.