

PLOTTED (LW)  
 PLAN NO. CG 822

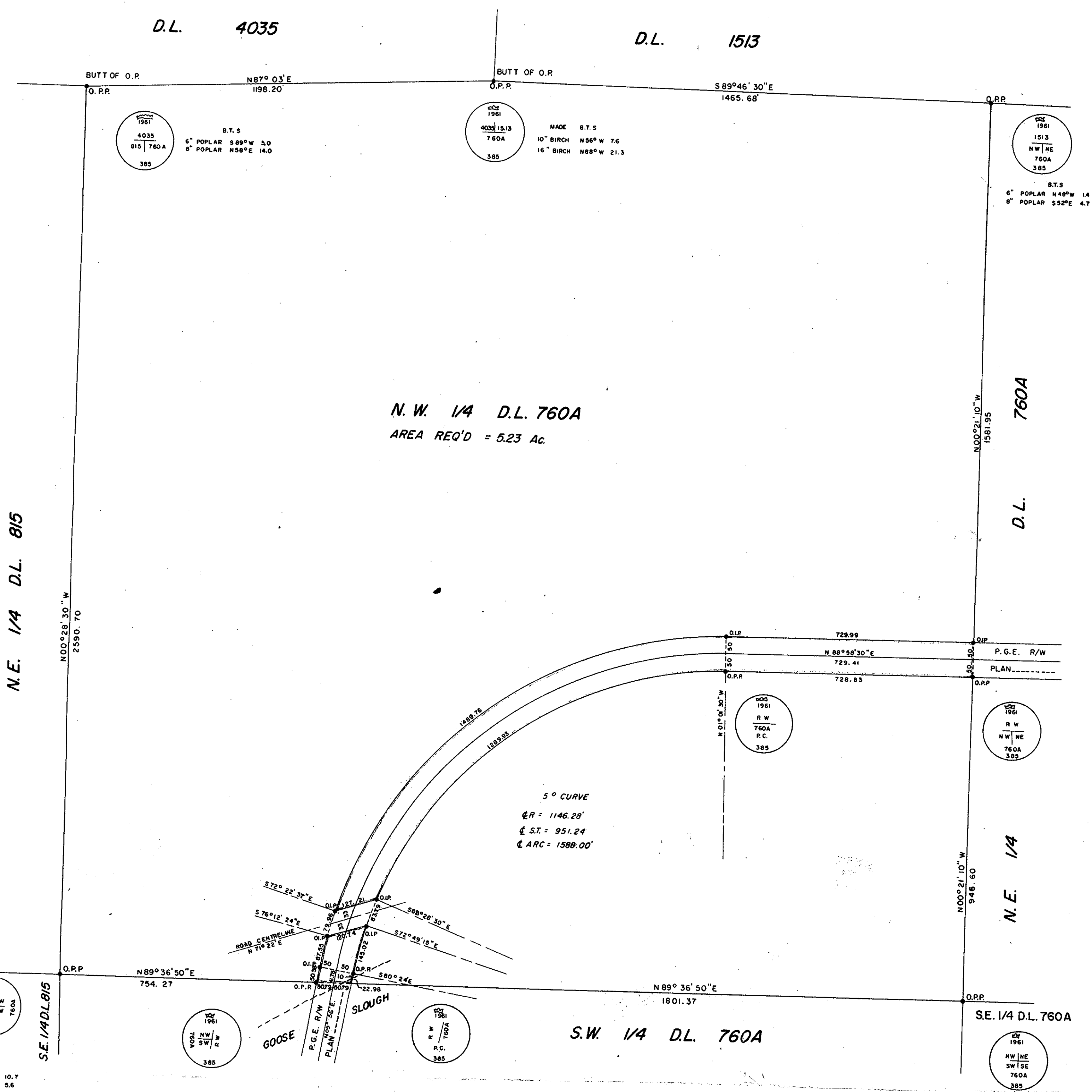
Deposited in the Land Registry  
 Office in Kamloops, B.C.  
 this 28<sup>th</sup> day of Nov., 1961.  
*[Signature]*  
 Registrar

**PACIFIC GREAT EASTERN RAILWAY COMPANY**  
 PLAN OF RAILWAY RIGHT-OF-WAY THROUGH  
 THE NORTHWEST QUARTER OF  
 DISTRICT LOT 760A  
 CARIBOO DISTRICT - BRITISH COLUMBIA

SCALE: 1" = 200'

NOTE: Bearings are astronomic, derived from the  
 West Boundary of D.L. 760A as shown  
 on Plan \_\_\_\_\_

LEGEND: • O.I.P. denotes an old iron pin found.  
 • O.P.P. denotes an old pipe post found.



I, DONALD A. DUFFY, of the City of Prince George,  
 a British Columbia Land Surveyor, make oath and say  
 that I was present at and did personally superintend  
 the survey represented by this plan and that the survey  
 and plan are correct. The said survey was completed  
 on the 13th of June, 1961.

Sworn before me  
 this 17<sup>th</sup> day of August, 1961. *[Signature]*  
 B.C.L.S.

*[Signature]*  
 Commissioner for taking Affidavits  
 within the Province of British Columbia.

I hereby certify that this is a true copy of the Official Plan on deposit in the  
 Department of Lands and Forests and numbered Plan 9 760 243 C.P.  
*[Signature]*  
 Surveyor General, Victoria B.C., 24<sup>th</sup> November, 1961.

PACIFIC GREAT EASTERN RAILWAY COMPANY

*[Signature]*  
 Vice President

*[Signature]*  
 Secretary

APPROVED  
*[Signature]*  
 Chief Engineer

SANCTIONED BY  
*[Signature]*  
 Minister of Commercial Transport