

Plan of Right-of-Way through  
Parcel Y, District Lot 777, Plan 649, and  
Block 6, and Lot 11, Block 3, Plan 6931,  
District Lot 777, Cariboo District

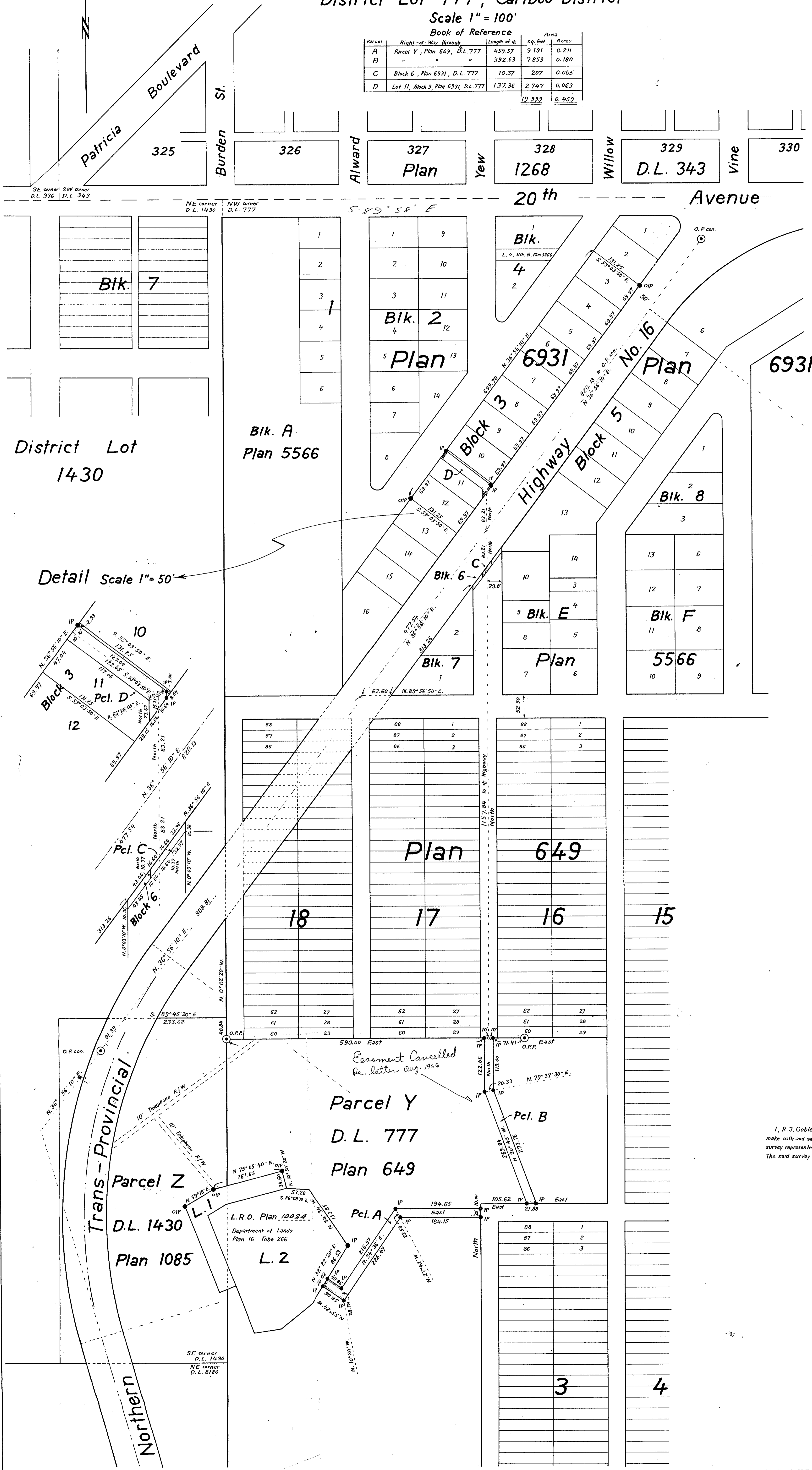
Scale 1" = 100'

Book of Reference

Parcel	Right-of-Way Through	Length of E	Sq. feet	Acres
A	Parcel Y, Plan 649, D.L. 777	459.57	9 191	0.211
B	" " " " " " " "	392.63	7 853	0.180
C	Block 6, Plan 6931, D.L. 777	10.37	207	0.005
D	Lot 11, Block 3, Plan 6931, P.L. 777	137.36	2 747	0.063
			19 989	0.459

PLAN NO. C.G. 592  
Deposited in the Land Registry Office at Kamloops, B.C.,  
this 27th day of JANUARY, 1960.

*[Signature]*  
Registrar



Detail Scale 1" = 50'

I hereby certify that this is a true copy  
of the Official Plan on deposit in the  
Department of Lands and Forests  
and numbered Plan G Tube 532.

*[Signature]*  
Surveyor General  
Victoria, B.C.  
27th January, 1960.

**Legend**  
Bearings are astronomic and are derived from  
North boundary of Parcel Y, Plan 649, as East  
as shown on L.R.O. Plan 100224 (on record  
Department of Lands Plan 16, Tube 266)  
Old concrete monuments found shown  $\odot$  O.P.con.  
Old standard pipe posts found shown  $\odot$  O.P.P.  
Old iron posts found shown  $\odot$  O.I.P.  
Iron posts set shown  $\bullet$  IP

I, R.J. Goble, of the city of Prince George, British Columbia Land Surveyor,  
make oath and say that I was present at and did personally superintend the  
survey represented by this plan and that the survey and plan are correct.  
The said survey was completed on the 30th day of September, 1959.

*[Signature]*  
R.J. Goble  
B.C.L.S.

Sworn before me at the city of Prince George  
this 27th day of January, 1960.

*[Signature]*  
A Commissioner for taking affidavits  
within British Columbia

Approved under the Land Registry Act  
this 15th day of DECEMBER, 1959.

*[Signature]*  
Approving Officer  
City of Prince George, B.C.

McWilliam - Whyte - Serle & Goble  
British Columbia Land Surveyors