

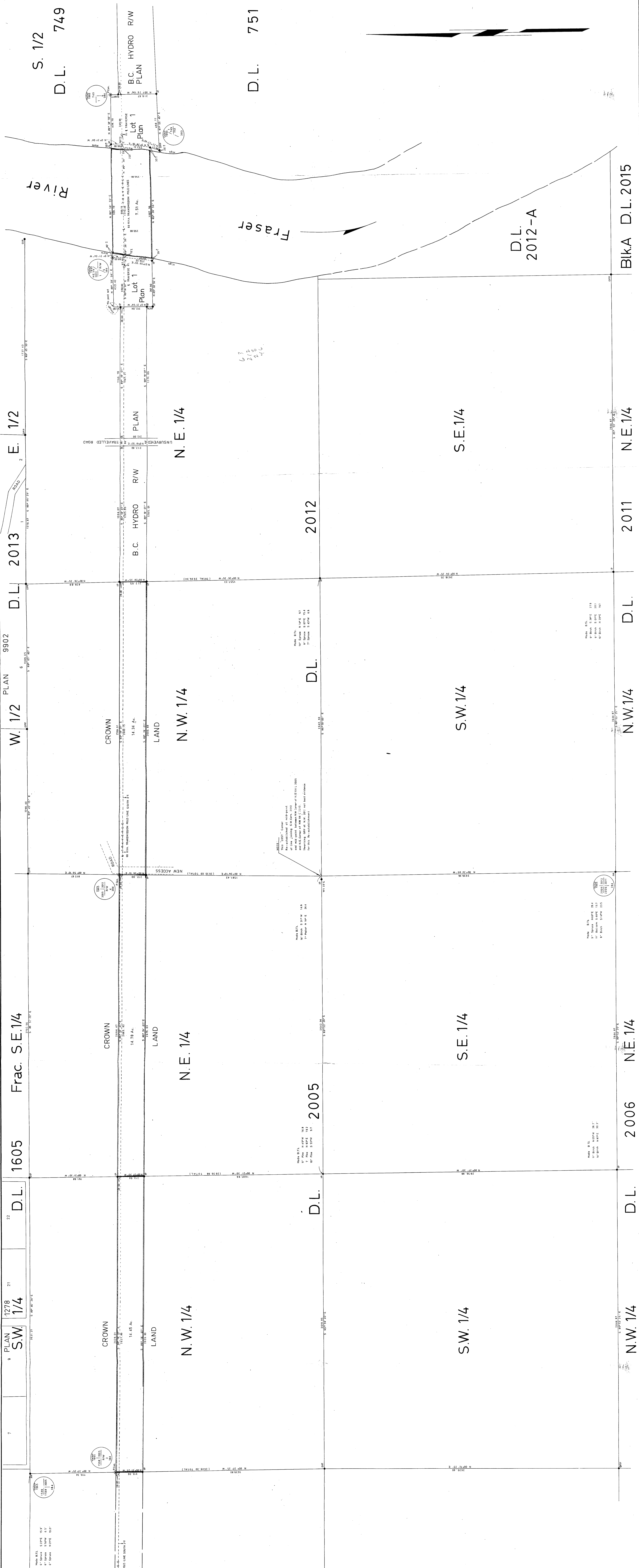
PLAN NO. CG 2204  
**NOTED TO (A.C.)**  
 Approved by the Land Surveyors' Branch of Engineers  
 The City of Victoria, B.C.

**British Columbia Hydro and Power Authority**

**Plan of Right-of-Way  
 Through  
 District Lots — 2005 and 2012  
 and crossing Fraser River  
 CARIBOO DISTRICT**

Scale 1" = 200'

BOOK OF REFERENCE	LEGAL DESCRIPTION CROWN LAND	AREA in Acres
	R/W in NW 1/4 D.L. 2005	14.45
	R/W in NE 1/4 D.L. 2005	14.78
	R/W in NW 1/4 D.L. 2012	14.34
	R/W in Fraser-River Crossing	7.51



THESE OFFICERS HAVE BEEN IN THE POSSESSION OF THE OFFICIAL  
 PLAN ON DEPOSIT IN THE DEPARTMENT OF LANDS, FORESTS AND  
 WATER RESOURCES AND NUMBERED PLAN IN TUBE 781



SURVEYOR-GENERAL, VICTORIA, B.C.  
 MAR 15 1986

**LEGEND**  
 Right-of-Way (R/W) as shown in this plan  
 Proposed R/W (P.R.W.) as shown in this plan  
 R/W in NW 1/4 D.L. 2005  
 R/W in NE 1/4 D.L. 2005  
 R/W in NW 1/4 D.L. 2012  
 R/W in Fraser-River Crossing

Surveyed by the City of Victoria  
 B.C. Surveyors' Association  
 Registered Professional Surveyors  
 with British Columbia

McWilliam Whyte Serite & Co  
 1278 West 11th Street  
 Victoria, B.C. V8M 4B3  
 Checked [ ] by [ ] Ref. No. 65  
 B.C.H. No. 905-57-X18-1218