

Plotted (KQ)

PLAN CG 2185
Deposited in the Land Registry Office at Kamloops
the 10th day of FEB. 1966

REGISTRAR

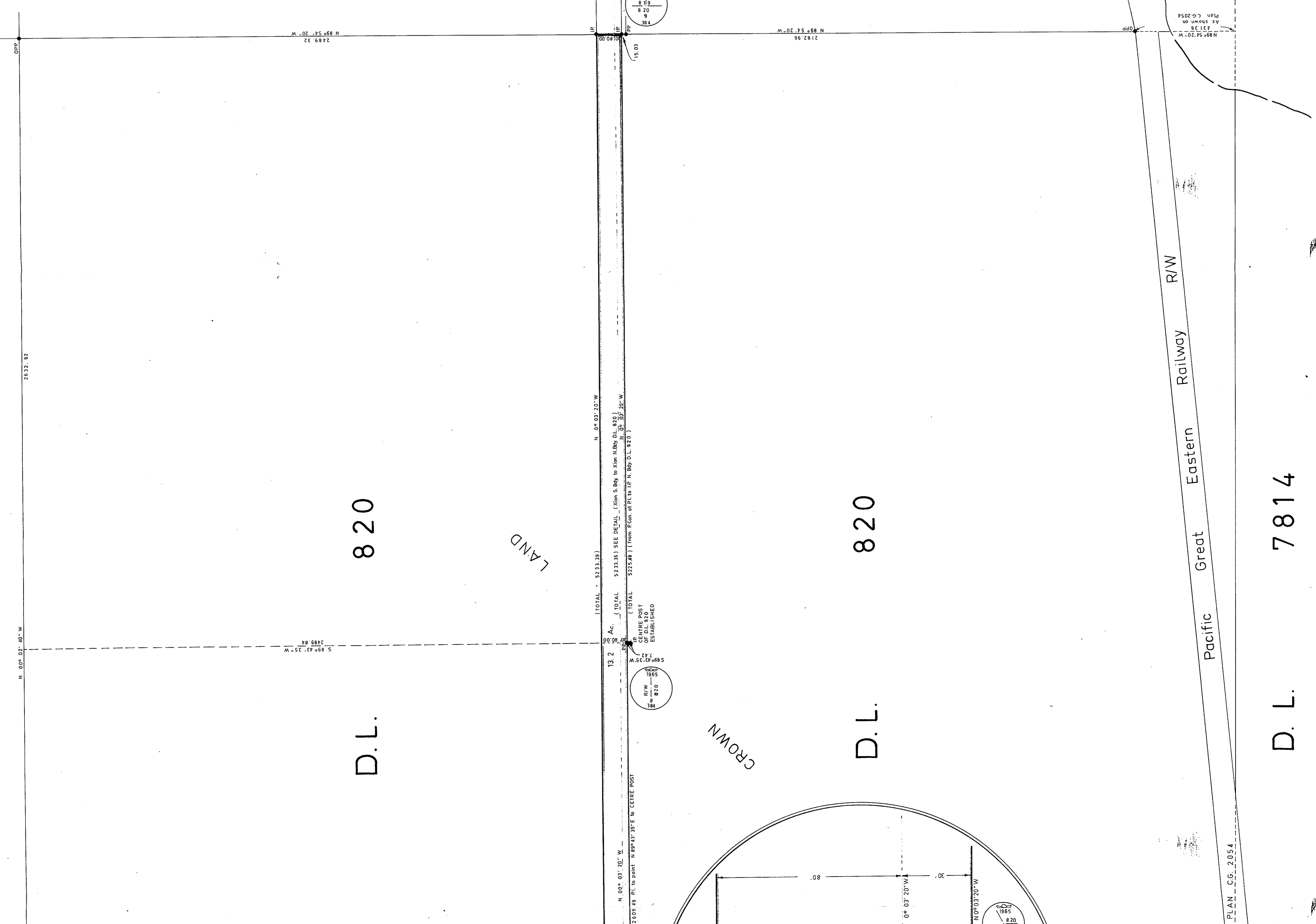
British Columbia Hydro and Power Authority

Plan of Right-of-Way
Through
District Lot 820,
CARIBOO DISTRICT.

SCALE 1" = 200'

S.W. 1/4 D.L. 819

Fr. S.E. 1/4 D.L. 819



BOOK OF REFERENCE	
(LEGAL DESCRIPTION)	AREA IN ACRES
R/W in D.L. 820	13.2

LEGEND

Bearings are astronomic and are derived from bearings of L.P.C.E. R/W through D.L. 2054 shown on Plan A-2380 as N 10° 00' 30" W. Bearing of E of R/W through D.L. 820 N 00° 03' 20" W, checked by Solar Observations.

Pipe post set shown
 Corner monument set shown
 Iron post set shown
 Old iron post found shown
 Old pipe post found shown

RP
 P.Con
 IP
 OIP
 OIPP

I HEREBY CERTIFY THAT THIS IS A TRUE COPY OF THE OFFICIAL PLAN ON DEPOSIT IN THE DEPARTMENT OF LANDS FORESTS AND WATER RESOURCES AND NUMBERED IS TUBE 773

[Signature]
 SURVEYOR GENERAL, VICTORIA B.C.
 FEB. 4 1966

I, R. J. Goble, of the City of Prince George, B.C., Columbia Land Surveyor, make oath and say that I was present at and did personally supervise the survey represented by this plan and that the bearings and plan are correct.

The said survey was completed the 24th day of FEB. 1965

[Signature]
 B.C.L.S.

Sworn before me at Prince George this 28th day of FEB. 1965

[Signature]
 A Commissioner for taking affidavits within British Columbia

McWilliam, Whyte, Serle & Goble
 British Columbia Land Surveyors
 1595, 5th Ave., Prince George B.C.

Checked [] S [] D [] X [] Ref. No. 65009-D
 B.C.H. No. 828-S7-X2-E (13-7)

PLAN CG. 2054