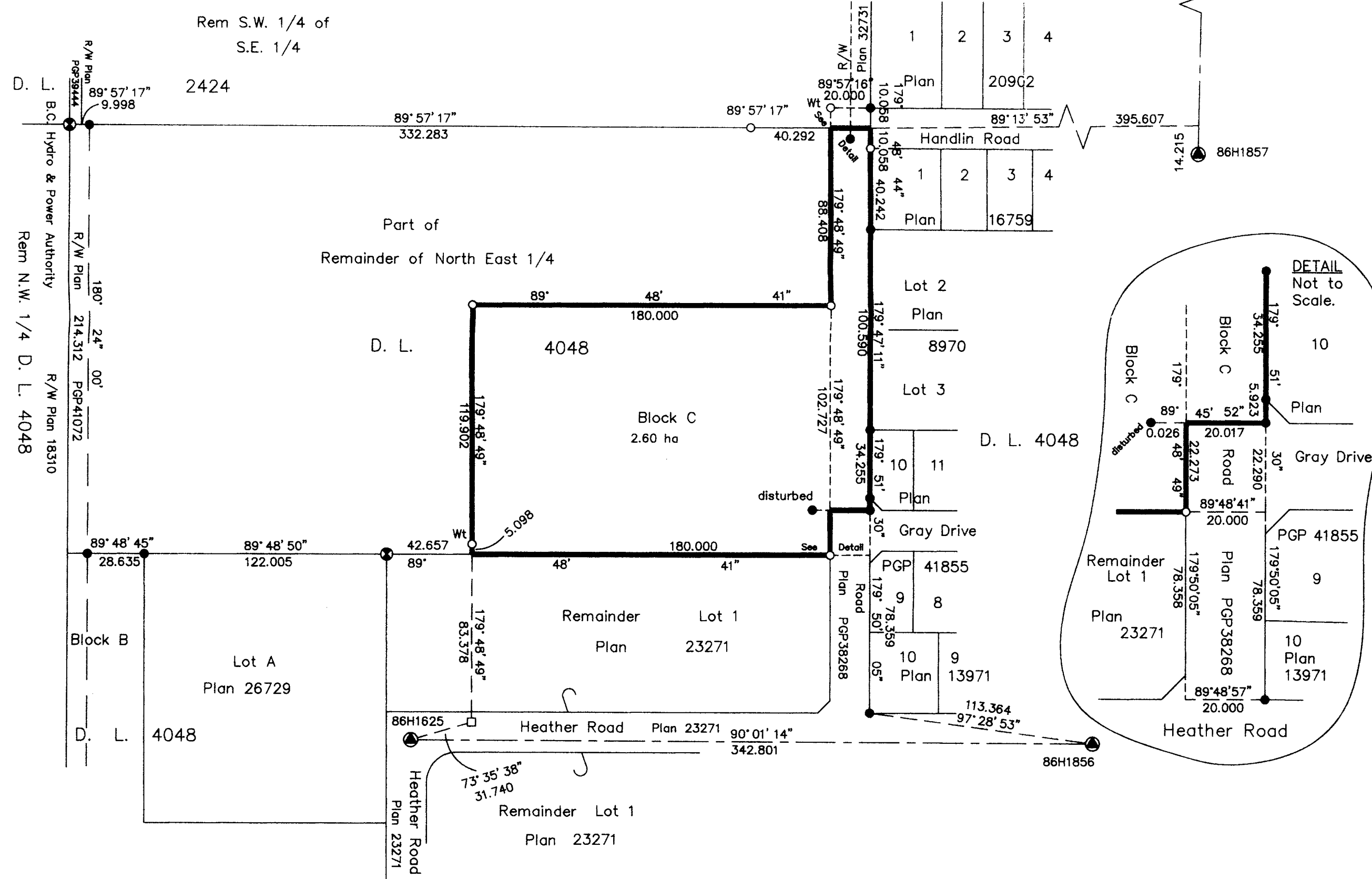
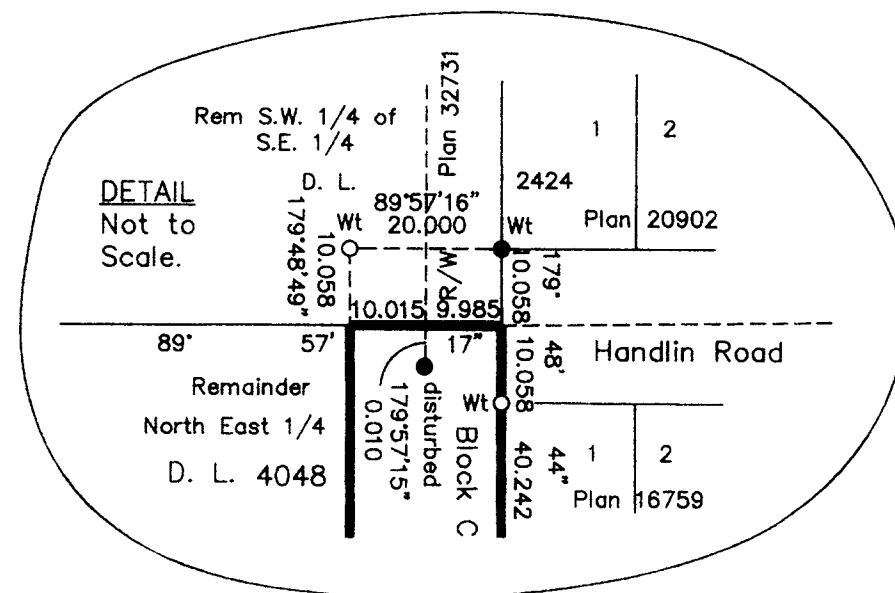


SURVEY PLAN OF BLOCK C
OF DISTRICT LOT 4048,
CARIBOO DISTRICT.

B.C.G.S. 93G.096

Scale: 1 : 2000 (Distances are in metres)



Grid bearings are derived from observations between control monuments 86H1856 and 86H1625, integrated survey area number 39, City of Prince George, B.C.

Note: This plan shows ground level measured distances. Prior to computation of U.T.M. co-ordinates multiply by the combined factor 0.99948109

LEGEND

- Lead Plug Placed
- ⊕ Standard Capped Post Found
- Standard Iron Post Found
- Standard Iron Post Placed
- ⊙ Control Monument Found

I, Gordon Kilbride, a British Columbia Land Surveyor of Prince George in British Columbia, certify that I was present at and personally superintended the survey represented by this plan and that the survey and plan are correct. The survey was completed on the 20th day of March, 1998.

Gordon Kilbride
Gordon Kilbride, B.C.L.S.

OFFICIAL PLAN
CONFIRMED UNDER SECTION 72
LAND ACT

Surveyor General _____
Victoria, B.C. _____

This plan lies within the Fraser-Fort
George Regional District.

KILBRIDE LAND SURVEYING LTD.
British Columbia Land Surveyors
Prince George, B.C.
Ph: (250) 562-1196 Fax: 562-3656

F.B.- RA D.L.- 4048 FILE No. 980063