

D. L. 748

D.L. 748

SURVEY PLAN OF BLOCK B OF DISTRICT LOT 748, CARIBOO DISTRICT.

B.C.G.S. 93G.087

Scale: 1 : 2000 (Distances are in metres)



Bearings to Bearing Trees are magnetic.

Grid bearings are derived from observations between control monuments 86H1702 and 86H1696, integrated survey area number 39, City of Prince George, B.C.

Note: This plan shows ground level measured distances. Prior to computation of U.T.M. co-ordinates multiply by the combined factor 0.9995105393.

LEGEND

- ⊙ Standard Capped Post Found
- ⊗ Standard Capped Post Placed
- Standard Iron Post Found
- Standard Iron Post Placed
- ⊠ Control Monument
- △ Traverse Hub Placed

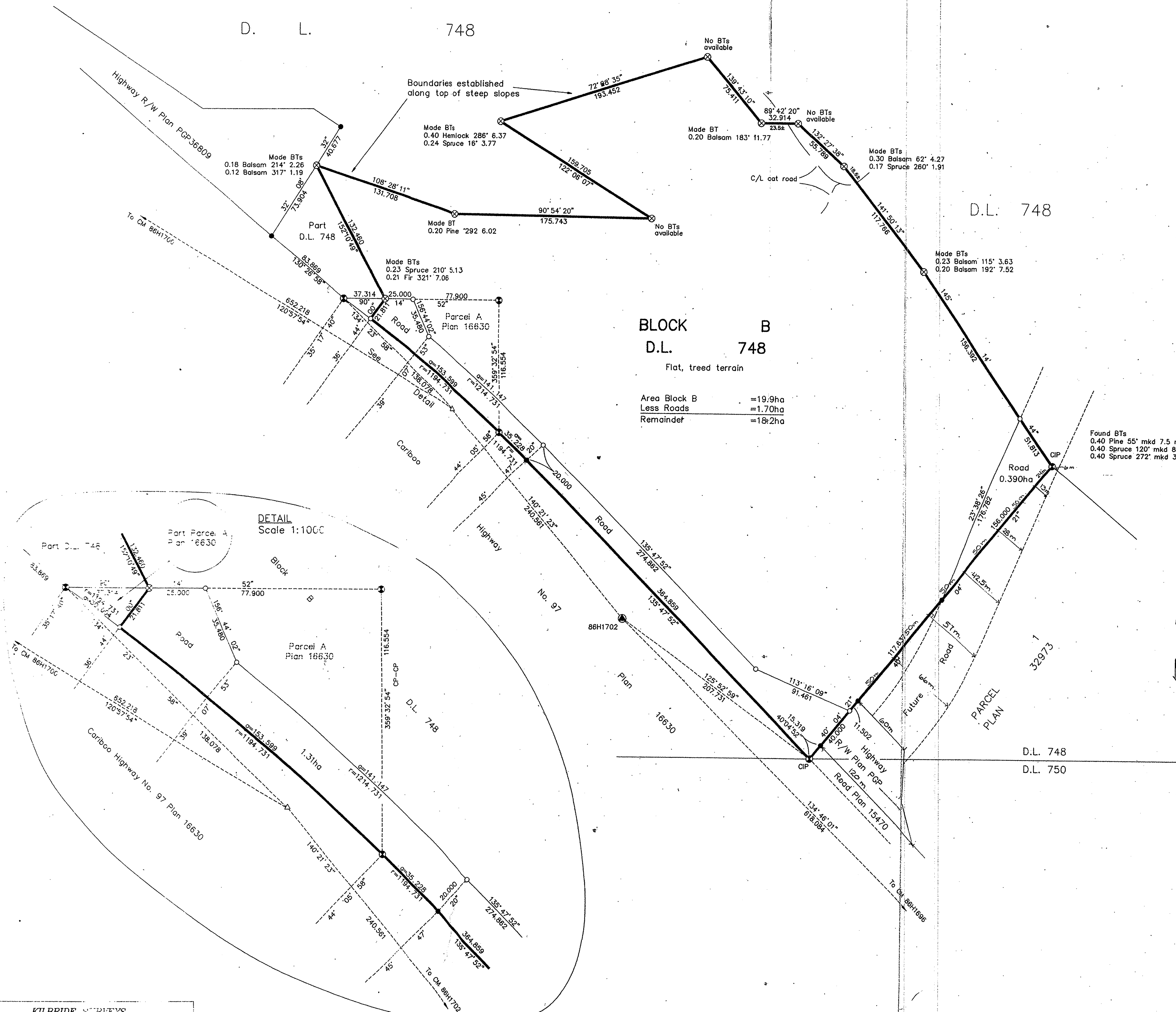
I, Dale L. Keown, a British Columbia Land Surveyor of Prince George in British Columbia, certify that I was present at and personally supervised the survey represented by this plan and that the survey and plan are correct. The survey was completed on the 22nd day of December, 1992.

Dale L. Keown, B.C.L.S.

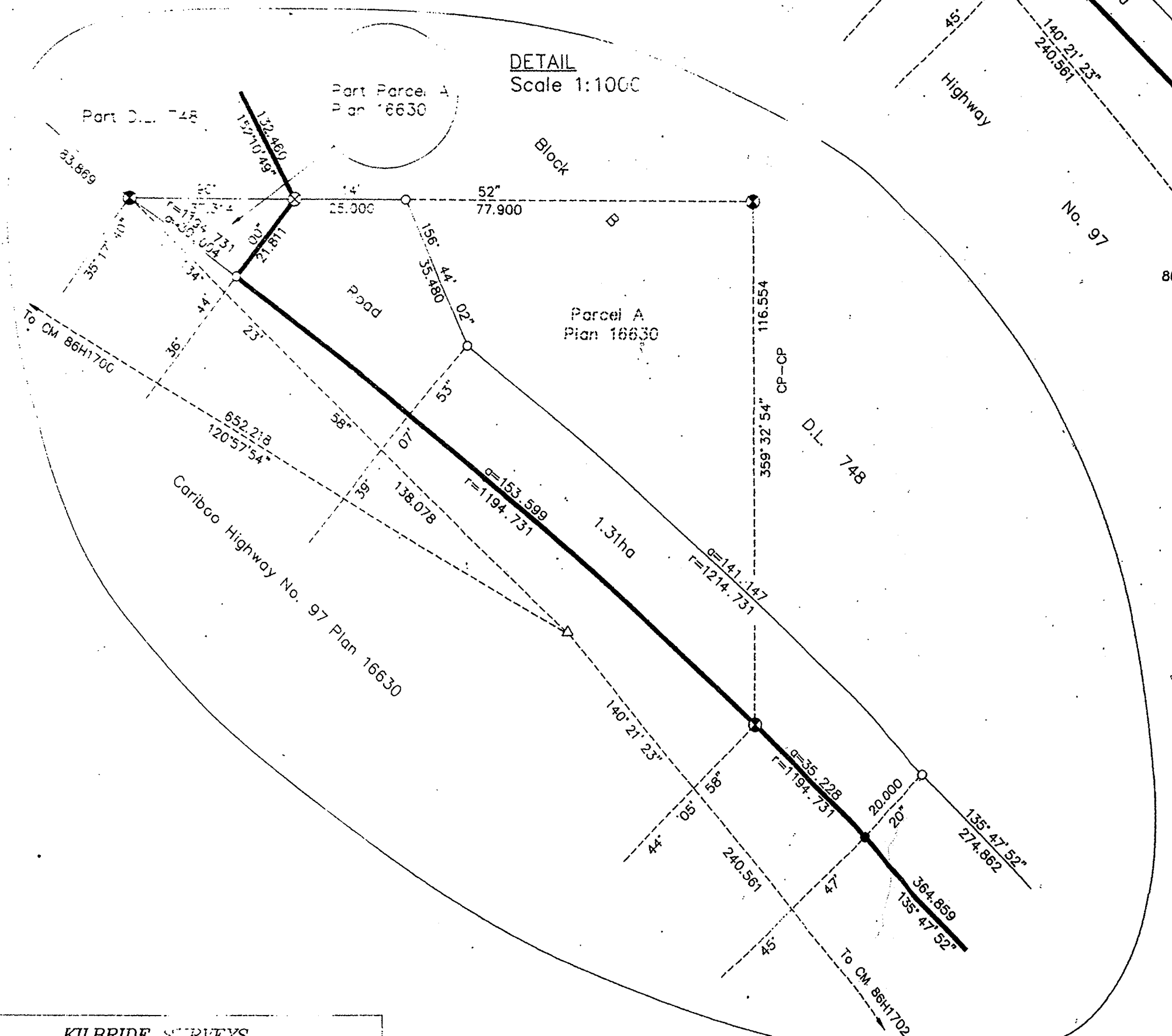
BLOCK B D.L. 748

Flat, treed terrain

Area Block B	=19.9ha
Less Roads	=1.70ha
Remainder	=18.2ha



DETAIL Scale 1:1000



Handwritten note: Hwy 97 South Block B - D.L. 748 C.D.