

PLAN OF SUBDIVISION OF
 LOT 3, PLAN 10486
DISTRICT LOT 754
 CARIBOO DISTRICT.

PLAN No. BCP 9 8 9 1

DEPOSITED IN THE LAND TITLE OFFICE
 AT NEW WESTMINSTER, B.C., THIS 03
 DAY OF MARCH, 20 04



SCALE = 1 : 1000 B.C.G.S. 93G.087
 DISTANCES ARE SHOWN IN METRES.

THIS PLAN SHOWS GROUND-LEVEL MEASURED DISTANCES.
 PRIOR TO COMPUTATION OF U.T.M. COORDINATES, MULTIPLY
 BY COMBINED FACTOR 0.99950671.

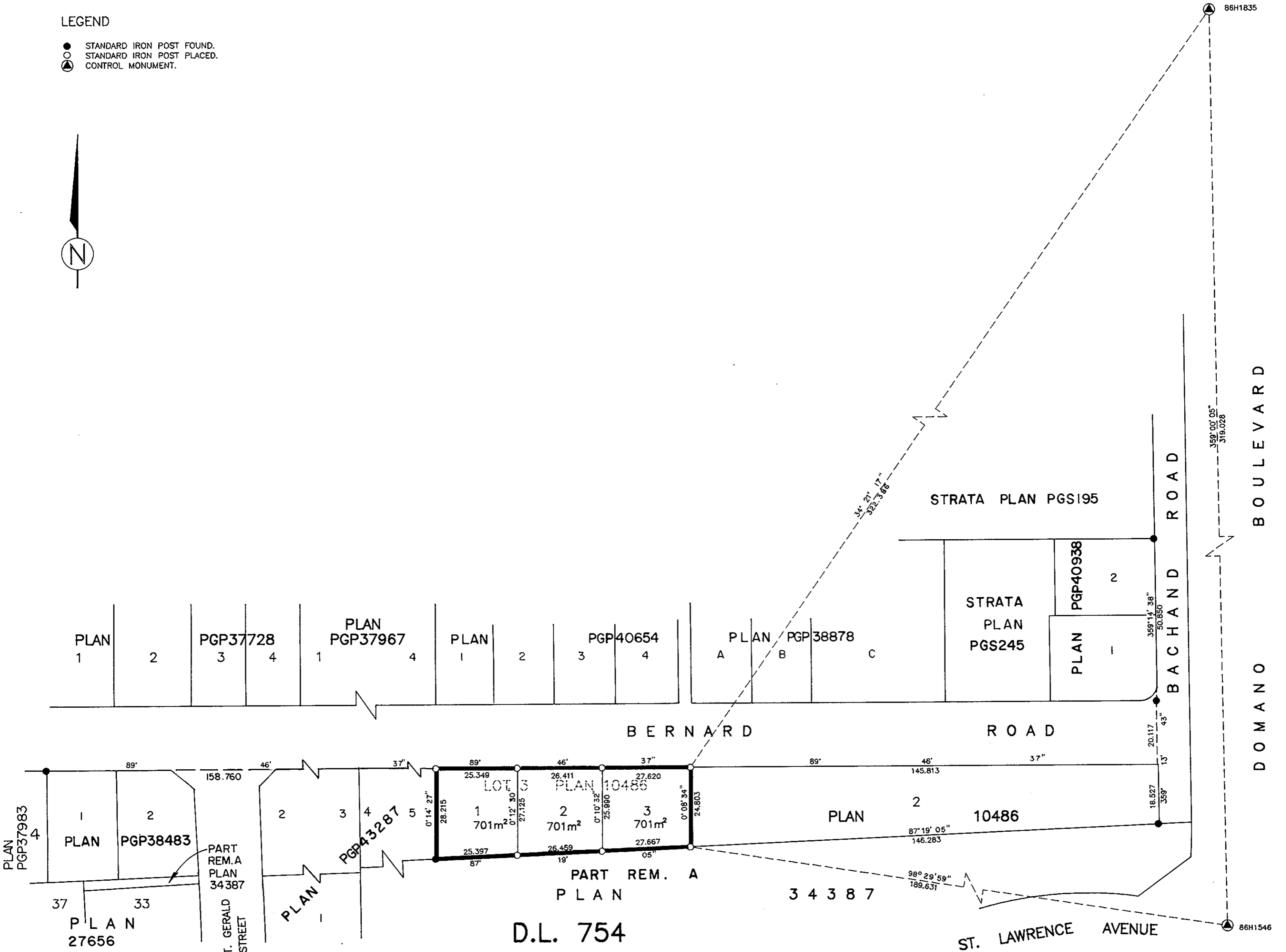
GRID BEARINGS ARE DERIVED FROM OBSERVATIONS
 BETWEEN CONTROL MONUMENTS 86H1835, AND 86H1546,
 INTEGRATED SURVEY AREA NUMBER 39.

LEGEND

- STANDARD IRON POST FOUND.
- STANDARD IRON POST PLACED.
- ▲ CONTROL MONUMENT.



REGISTRAR
REF. # BW87836



RE-APPROVED UNDER THE LAND TITLE ACT
 THIS 29 DAY OF April, 2004

Kledilovic
 APPROVING OFFICER, CITY OF PRINCE GEORGE

APPROVED UNDER THE LAND TITLE ACT
 THIS 10 DAY OF NOVEMBER, 19 94

George Halldorson
 APPROVING OFFICER, CITY OF PRINCE GEORGE.

I, RONALD L. JOHNS, A BRITISH COLUMBIA LAND SURVEYOR, OF PRINCE GEORGE, IN BRITISH COLUMBIA, CERTIFY THAT I WAS PRESENT AT AND PERSONALLY SUPERINTENDED THE SURVEY REPRESENTED BY THIS PLAN AND THAT THE SURVEY AND PLAN ARE CORRECT. THE FIELD SURVEY WAS COMPLETED ON THE 25 TH DAY OF MARCH, 2004. THE PLAN WAS COMPLETED AND CHECKED, AND THE CHECKLIST FILED UNDER # 13411 ON THE 31st DAY OF MARCH 2004.

R.L. Johns
 R.L. JOHNS B.C.L.S., C.L.S.

I, RONALD L. JOHNS, A BRITISH COLUMBIA LAND SURVEYOR, OF PRINCE GEORGE, IN BRITISH COLUMBIA, CERTIFY THAT I WAS PRESENT AT AND PERSONALLY SUPERINTENDED THE SURVEY REPRESENTED BY THIS PLAN AND THAT THE SURVEY AND PLAN ARE CORRECT. THE SURVEY WAS COMPLETED ON THE 16TH DAY OF MAY, 1994.

R.L. Johns
 R.L. JOHNS, B.C.L.S.

OWNER: METRO KOZMA
 WITNESS: *[Signature]*
 PRINT NAME: RON JOHNS
 ADDRESS: 240 VICTORIA STREET
PRINCE GEORGE, B.C.
 OCCUPATION: B.C. LAND SURVEYOR

THIS PLAN LIES WITHIN THE FRASER-FORT GEORGE REGIONAL DISTRICT.

R. L. JOHNS LAND SURVEYING LTD.
 LEGAL AND ENGINEERING SURVEYS
 240 VICTORIA STREET
 PRINCE GEORGE, B. C. V2L 2J4
 PHONE: (250) 562-5759
 FAX: (250) 562-5703
 94-69-S 16-28-31
 05-3-22 882-29