

REFERENCE PLAN OF EASEMENT  
OVER BLOCKS D, E AND F,  
DISTRICT LOT 913, CARIBOO DISTRICT.  
Pursuant to Section 99(1)(e) of the  
Land Title Act.  
B.C.G.S. 93G.087

Grid bearings are derived from observations between control monuments 85H113 and 85H1049 integrated survey area number 39, City of Prince George, B.C. NAD83(CSRS)

Note: This plan shows ground level measured distances. Prior to computation of U.T.M. co-ordinates multiply by the combined factor 0.9995130

PLAN NO. BCP 9369

Deposited in the Land Title Office at New Westminster this 2 day of March 2004

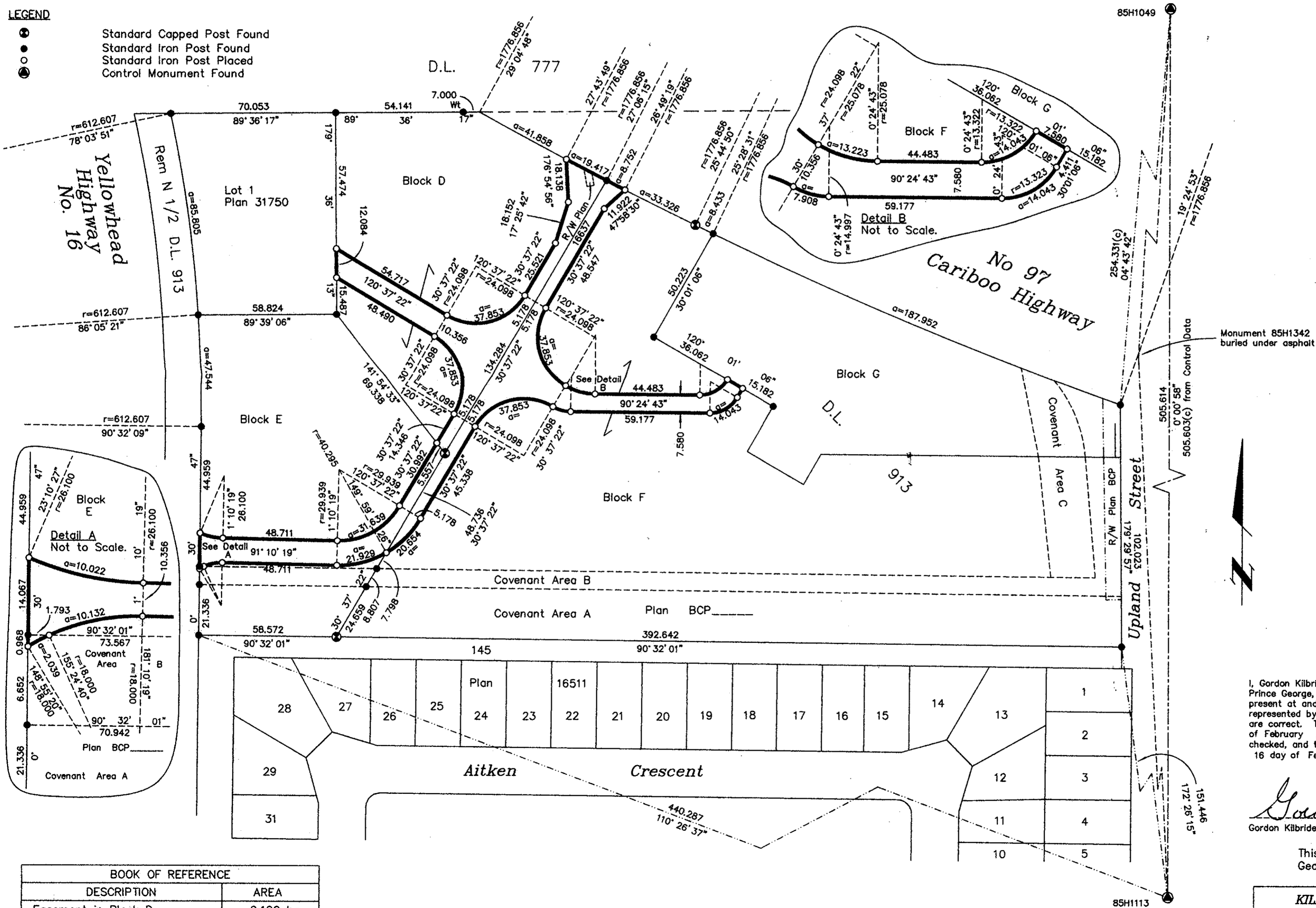
REGISTRAR

Scale: 1 : 1250 (Distances are in metres)



LEGEND

- Standard Capped Post Found
- Standard Iron Post Found
- Standard Iron Post Placed
- Control Monument Found



Monument 85H1342 buried under asphalt



I, Gordon Kilbride, a British Columbia Land Surveyor, of Prince George, in British Columbia, certify that I was present at and personally superintended the survey represented by this plan, and that the survey and plan are correct. The field survey was completed on the 9 day of February, 2004. The plan was completed and checked, and the checklist filed under #11754, on the 16 day of February, 2004.

*Gordon Kilbride*  
Gordon Kilbride, B.C.L.S.

This plan lies within the Fraser-Fort George Regional District.

BOOK OF REFERENCE	
DESCRIPTION	AREA
Easement in Block D	0.190 ha
Easement in Block E	0.109 ha
Easement in Block F	0.206 ha

**KILBRIDE LAND SURVEYING LTD.**  
British Columbia Land Surveyors  
Prince George, B.C.  
Ph: (250) 562-1196 Fax: 562-3656

F.B.- RA	D.L.- 913	File No. -030238E
----------	-----------	-------------------