

REFERENCE PLAN TO ACCOMPANY
A COVENANT OVER BLOCKS E, F
AND G, DISTRICT LOT 913,
CARIBOO DISTRICT.

Deposited in the Land Title Office at New
Westminster this 2nd day of March 2004

Pursuant to Section 99 and 219
of the Land Title Act.

REGISTRAR

B.C.G.S. 93G.087

Scale: 1 : 2000 (Distances are in metres)

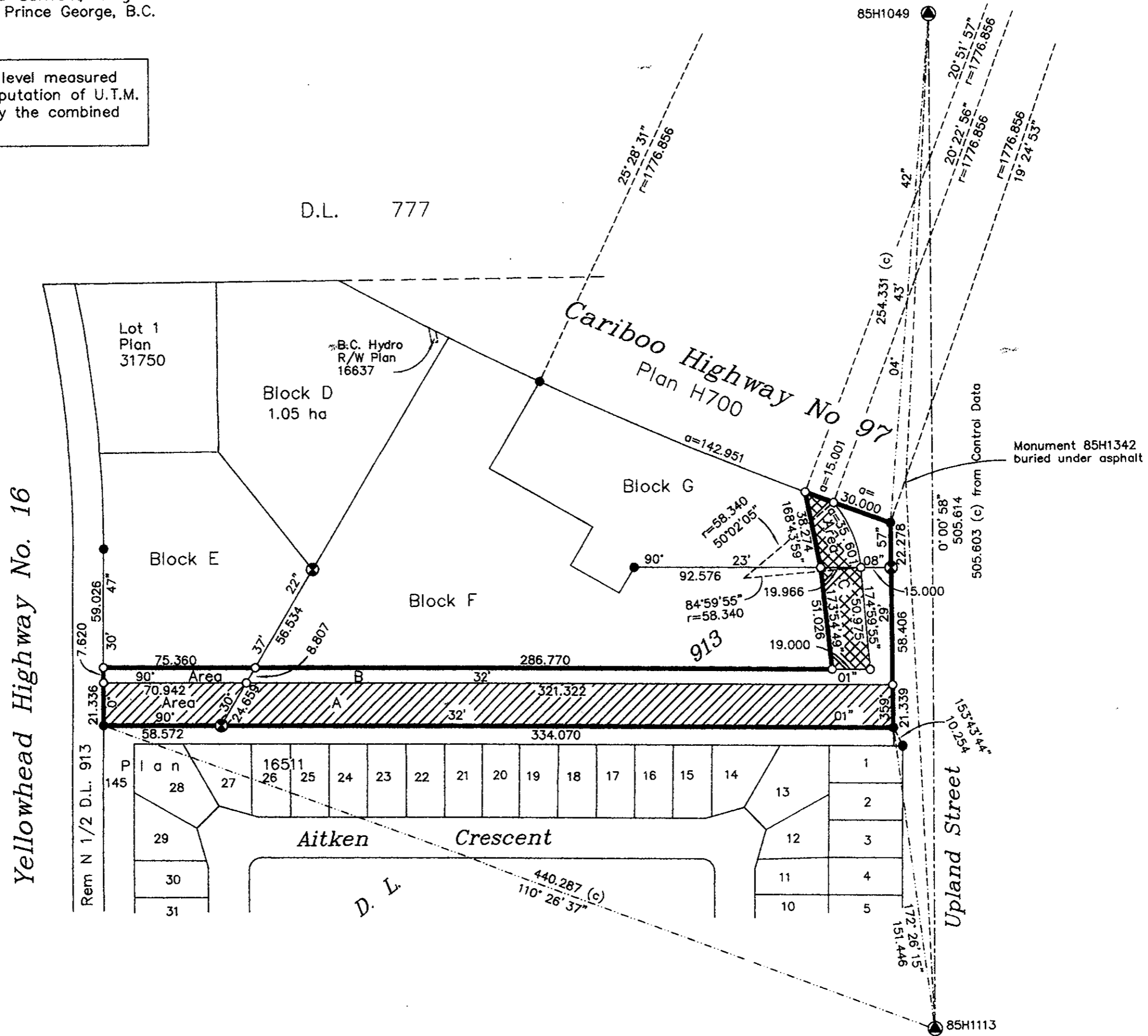


LEGEND

- Standard Capped Post Found
- Standard Iron Post Found
- Standard Iron Post Placed
- Control Monument Found

Grid bearings are derived from observations between control monuments 85H1113 and 85H1049 integrated survey area number 39, City of Prince George, B.C. NAD83(CSRS)

Note: This plan shows ground level measured distances. Prior to computation of U.T.M. co-ordinates multiply by the combined factor 0.9995130



- Covenant Area A
- Covenant Area B
- Covenant Area C

BOOK OF REFERENCE	
DESCRIPTION	AREA
Covenant Area A in Block E	0.138 ha
Covenant Area A in Block F	0.699 ha
Covenant Area B in Block E	557 m ²
Covenant Area B in Block F	0.309 ha
Covenant Area B in Block G	491 m ²
Covenant Area C in Block F	988 m ²
Covenant Area C in Block G	629 m ²

I, Gordon Kilbride, a British Columbia Land Surveyor, of Prince George, in British Columbia, certify that I was present at and personally superintended the survey represented by this plan, and that the survey and plan are correct. The field survey was completed on the 19 day of January, 2004. The plan was completed and checked, and the checklist filed under # 11753, on the 16 day of February, 2004.

Gordon Kilbride
Gordon Kilbride, B.C.L.S.

This plan lies within the Fraser-Fort
George Regional District.

KILBRIDE LAND SURVEYING LTD.
British Columbia Land Surveyors
Prince George, B.C.
Ph: (250) 562-1196 Fax: 562-3656

F.B. RA	D.L. 913	File No. 030238C
---------	----------	------------------