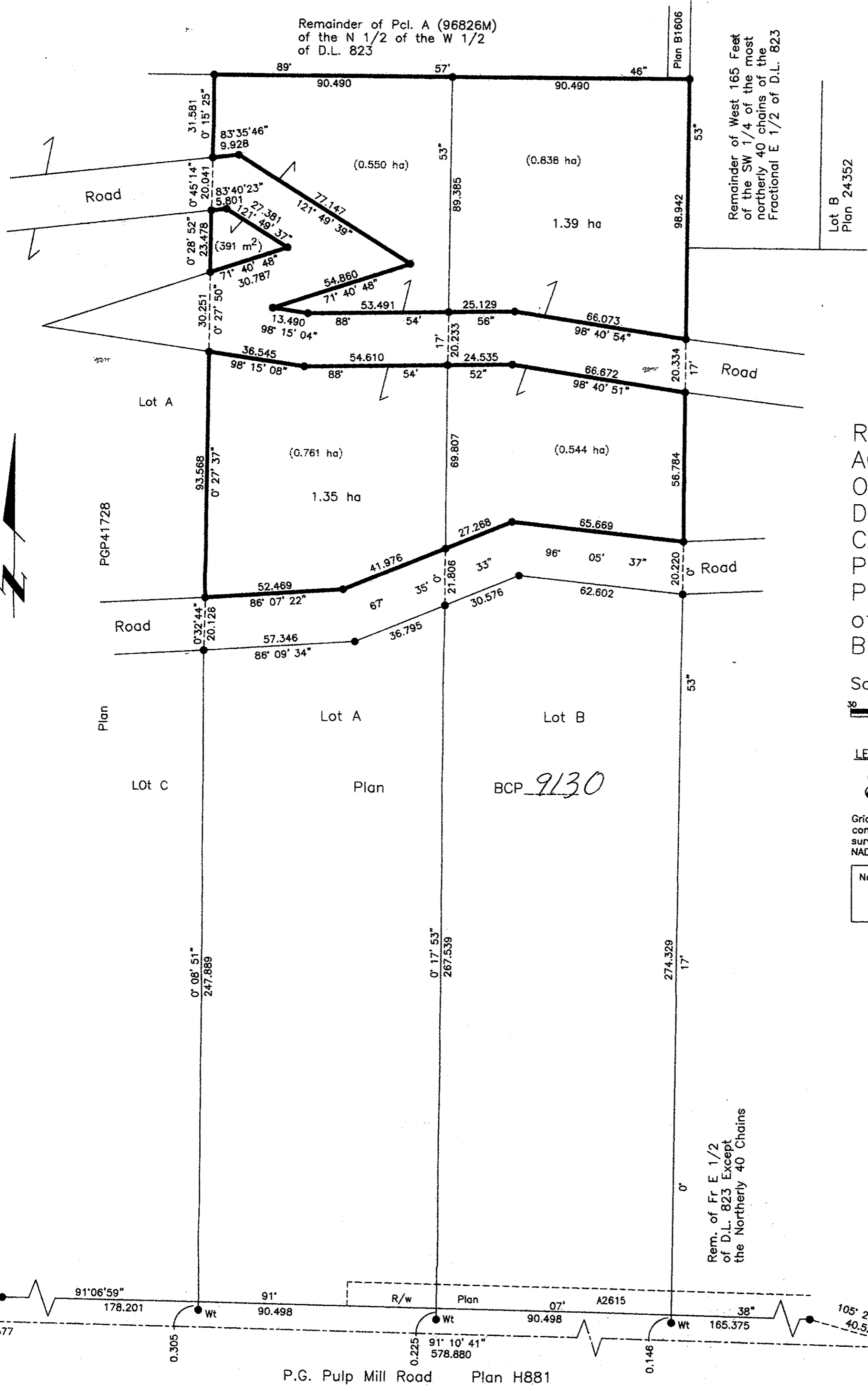


Deposited in the Land Title Office at New Westminster this 14 day of JAN. 2004

REGISTRAR

Ref # BW 16607



REFERENCE PLAN TO ACCOMPANY A COVENANT ON PART OF LOTS A AND B, DISTRICT LOT 823, CARIBOO DISTRICT, PLAN BCP 9130 Pursuant to Section 219 of the Land Title Act. B.C.G.S. 93G.097

Scale: 1 : 1250 (Distances are in metres)

LEGEND

- Standard Iron Post Found
- ⊙ Control Monument Found

Grid bearings are derived from observations between control monuments 86H1577 and 86H1591, integrated survey area number 39, City of Prince George, B.C. NAD83(CSRS)

Note: This plan shows ground level measured distances. Prior to computation of U.T.M. co-ordinates multiply by the combined factor 0.9995166

I, Gordon Kilbride, a British Columbia Land Surveyor, of Prince George, in British Columbia, certify that I was present at and personally supervised the survey represented by this plan, and that the survey and plan are correct. The field survey was completed on the 17 day of September, 2002.

Gordon Kilbride
Gordon Kilbride, B.C.L.S.

This plan lies within the Fraser-Fort George Regional District.

KILBRIDE LAND SURVEYING LTD.
British Columbia Land Surveyors
Prince George, B.C.
Ph: (250) 562-1196 Fax: 562-3656

F.B- WU03 | D.L- 823 | File No. - 000150C