

PLAN OF SUBDIVISION OF
 PARCEL A (PK39574),
 DISTRICT LOT 2003,
 CARIBOO DISTRICT,
 PLAN PGP39459.
 B.C.G.S. 93G.087

PLAN NO. BCP 9054

Deposited in the Land Title Office at New
 Westminster this 08 day of JAN. 2004

Scale: 1 : 750 (Distances are in metres)



Grid bearings are derived from observations between
 control monuments 86H1484 and 86H1706, integrated
 survey area number 39, City of Prince George, B.C.
 NAD83(CSRS)

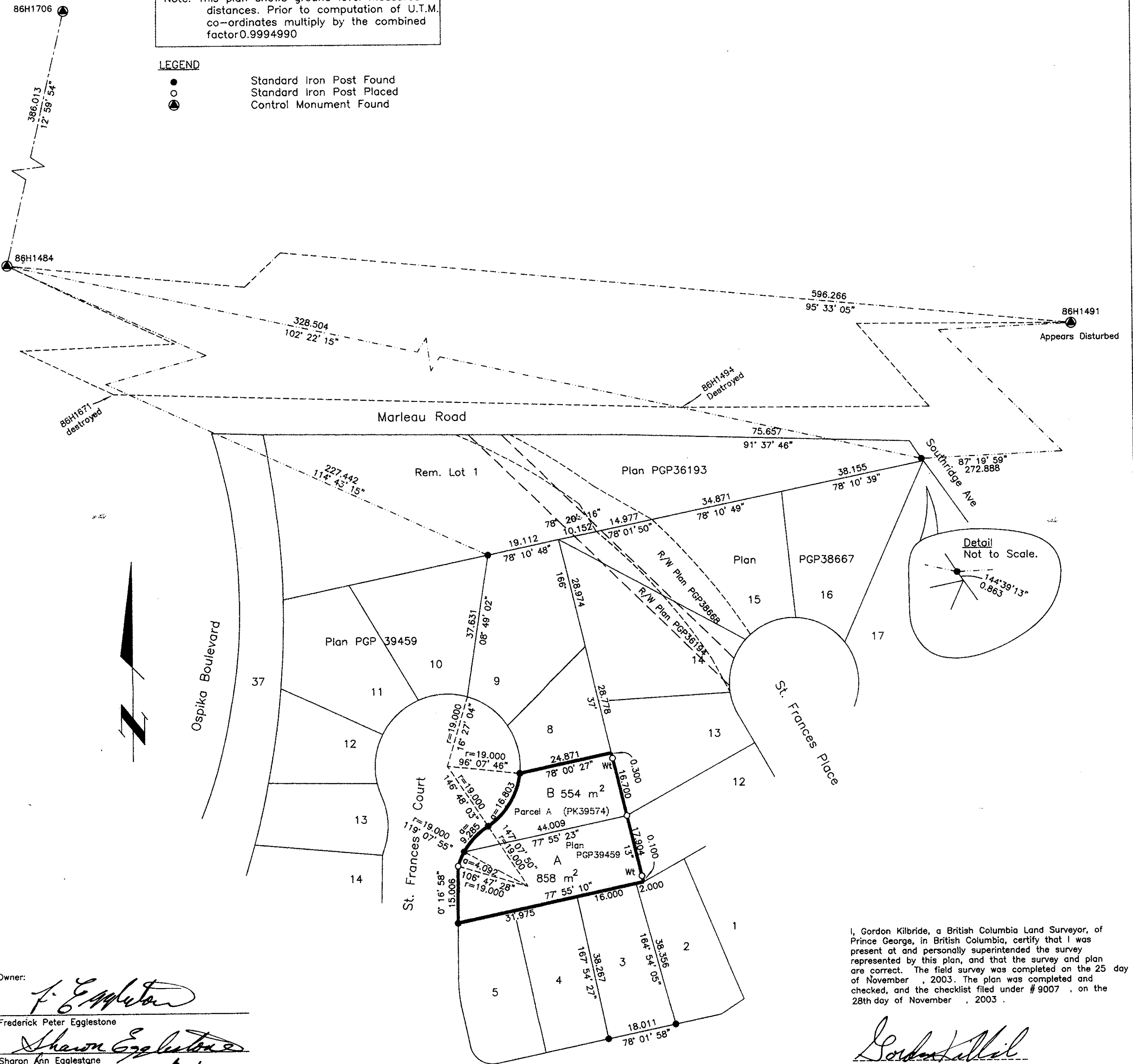
Note: This plan shows ground level measured
 distances. Prior to computation of U.T.M.
 co-ordinates multiply by the combined
 factor 0.9994990

LEGEND

- Standard Iron Post Found
- Standard Iron Post Placed
- ⊙ Control Monument Found

REGISTRAR

REF. # BW 6736



Owner:
F. Egglestone
 Frederick Peter Egglestone
Sharon Egglestone
 Sharon Ann Egglestone
 Witness to both
Gordon Kilbride
 Gordon Kilbride
 Print Name
 185 Quebec St.
 Address
 Prince George V2L 1W1
 Postal Code
 BC Land Surveyor
 Occupation

Approved under the Land Title Act this 15th day of
 December, 2003
Frederick Egglestone
 Approving Officer:
 City of Prince George

I, Gordon Kilbride, a British Columbia Land Surveyor, of
 Prince George, in British Columbia, certify that I was
 present at and personally superintended the survey
 represented by this plan, and that the survey and plan
 are correct. The field survey was completed on the 25 day
 of November, 2003. The plan was completed and
 checked, and the checklist filed under # 9007, on the
 28th day of November, 2003.

Gordon Kilbride
 Gordon Kilbride, B.C.L.S.

This plan lies within the Fraser-Fort
 George Regional District.

KILBRIDE LAND SURVEYING LTD. British Columbia Land Surveyors Prince George, B.C. Ph: (250) 562-1196 Fax: 562-3656		
F.B.- WV43	D.L.- 2003	File No. - 030237