

REFERENCE PLAN TO ACCOMPANY CITY OF PRINCE GEORGE
 BYLAW No. _____ CLOSING PART OF LANE ADJACENT TO
 LOTS 1 TO 6 INCLUSIVE, AMENDED LOT 7(66912M), AMENDED
 LOT 14(66912M) AND LOTS 15 TO 20 INCLUSIVE AND ESTABLISHING
 AS ROAD PARTS OF LOTS 1 AND 20; ALL WITHIN BLOCK 146, PLAN 1268,
 DISTRICT LOT 343,
 CARIBOO DISTRICT.

B.G.C.S. 93G.097
 PURSUANT TO SECTION 525(3) OF THE LOCAL GOVERNMENT ACT.

PLAN No. BCP 7832
 BV48556
 DEPOSITED IN THE LAND TITLE OFFICE
 AT NEW WESTMINSTER, B.C., THIS 17th
 DAY OF OCTOBER, 2003



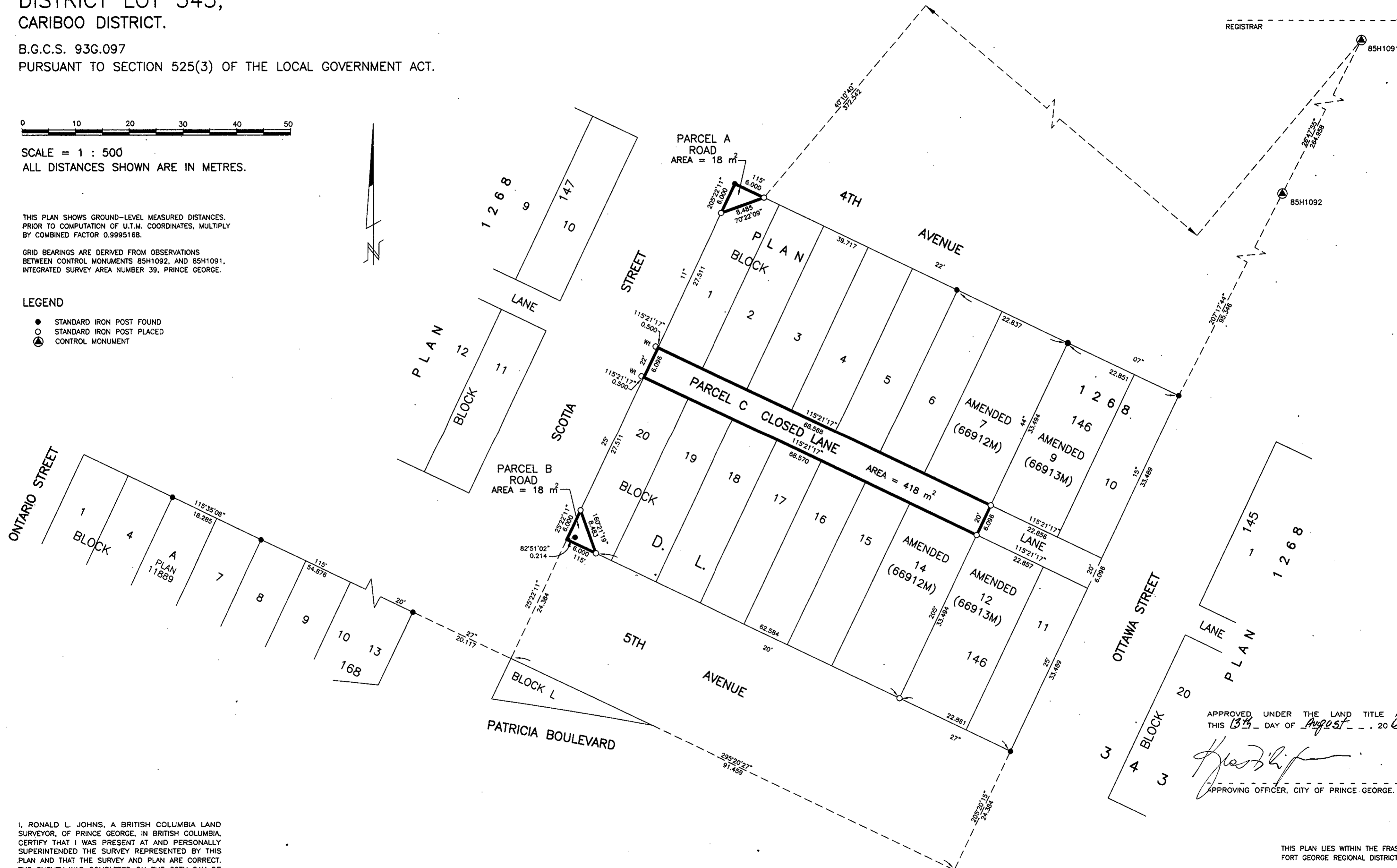
SCALE = 1 : 500
 ALL DISTANCES SHOWN ARE IN METRES.

THIS PLAN SHOWS GROUND-LEVEL MEASURED DISTANCES.
 PRIOR TO COMPUTATION OF U.T.M. COORDINATES, MULTIPLY
 BY COMBINED FACTOR 0.9995168.

GRID BEARINGS ARE DERIVED FROM OBSERVATIONS
 BETWEEN CONTROL MONUMENTS 85H1092, AND 85H1091,
 INTEGRATED SURVEY AREA NUMBER 39, PRINCE GEORGE.

LEGEND

- STANDARD IRON POST FOUND
- STANDARD IRON POST PLACED
- ⊙ CONTROL MONUMENT



APPROVED UNDER THE LAND TITLE ACT
 THIS 13th DAY OF August, 2003

[Signature]
 APPROVING OFFICER, CITY OF PRINCE GEORGE.

I, RONALD L. JOHNS, A BRITISH COLUMBIA LAND
 SURVEYOR, OF PRINCE GEORGE, IN BRITISH COLUMBIA,
 CERTIFY THAT I WAS PRESENT AT AND PERSONALLY
 SUPERINTENDED THE SURVEY REPRESENTED BY THIS
 PLAN AND THAT THE SURVEY AND PLAN ARE CORRECT.
 THE SURVEY WAS COMPLETED ON THE 29TH DAY OF
 JULY, 2002.

[Signature]
 R.L. JOHNS, B.C.L.S., C.L.S.

THIS PLAN LIES WITHIN THE FRASER-
 FORT GEORGE REGIONAL DISTRICT.

R. L. JOHNS LAND SURVEYING LTD.
 LEGAL AND ENGINEERING SURVEYS
 240 VICTORIA STREET
 PRINCE GEORGE, B. C. V2L 2J4
 PHONE: (250)562-5759
 FAX: (250)562-5703

2000070 U10-31,33-35
 FF1-10-12