

Deposited in the Land Title Office at New Westminster this 13 day of September 2003.

REGISTRAR

Highway 16 East
R/W Plan 33073

68° 42' 26"
106.656

68° 42' 27"
41.406

59° 46'
75° 28' 43"

70° 08'
24.285

45°
15.230

839

R/W Plan C.G.

R/W Plan PGP47537
R/W Plan N-192 and PGP476969

159° 46' 41"
386.307
0.797

138° 49' 30"
171.715

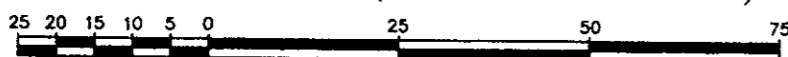
Lot 1
Plan PGP39143

D. L. 955

REFERENCE PLAN OF STATUTORY
RIGHT OF WAY OVER PART OF
LOT 1, PLAN PGP39143,
DISTRICT LOT 955,
CARIBOO DISTRICT.

Pursuant to Section 113
of the Land Title Act.
B.C.G.S. 93G.097

Scale: 1 : 1000 (Distances are in metres)



Bearings are astronomic, derived from
Plan 33073 = 68°42'26".

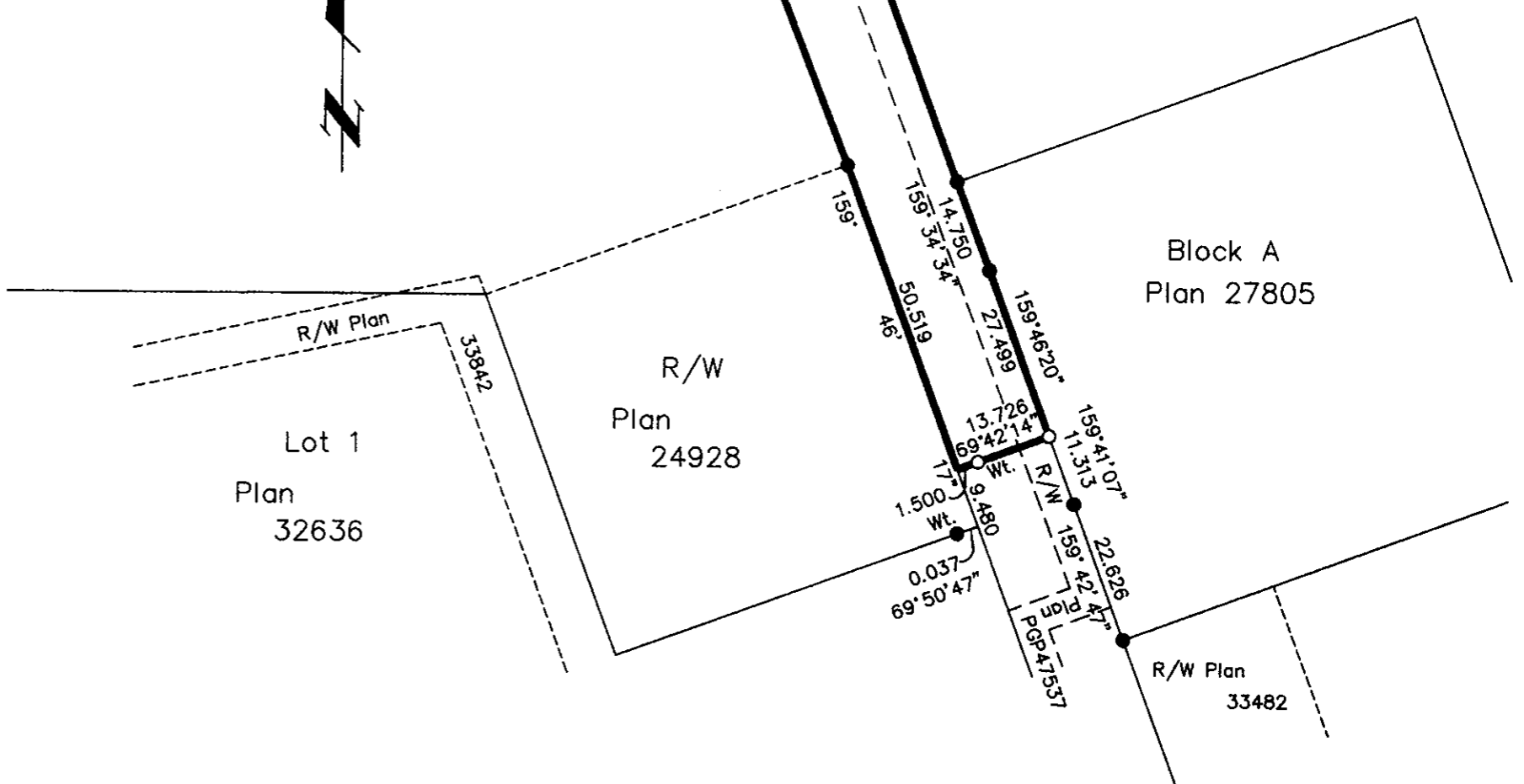
LEGEND

- Standard Iron Post Found
- Standard Iron Post Placed



I, Gordon Kilbride, a British Columbia Land Surveyor, of Prince George, in British Columbia, certify that I was present at and personally superintended the survey represented by this plan, and that the survey and plan are correct. The survey was completed on the 19th day of July, 2002.

Gordon Kilbride
Gordon Kilbride, B.C.L.S.



This plan lies within the Fraser-Fort George Regional District.

KILBRIDE LAND SURVEYING LTD. British Columbia Land Surveyors Prince George, B.C. Ph: (250) 562-1196 Fax: 562-3656		
F.B.- WQ73	D.L.- 955	File No. -020091