

REGISTRAR  
REF. # BV 358226

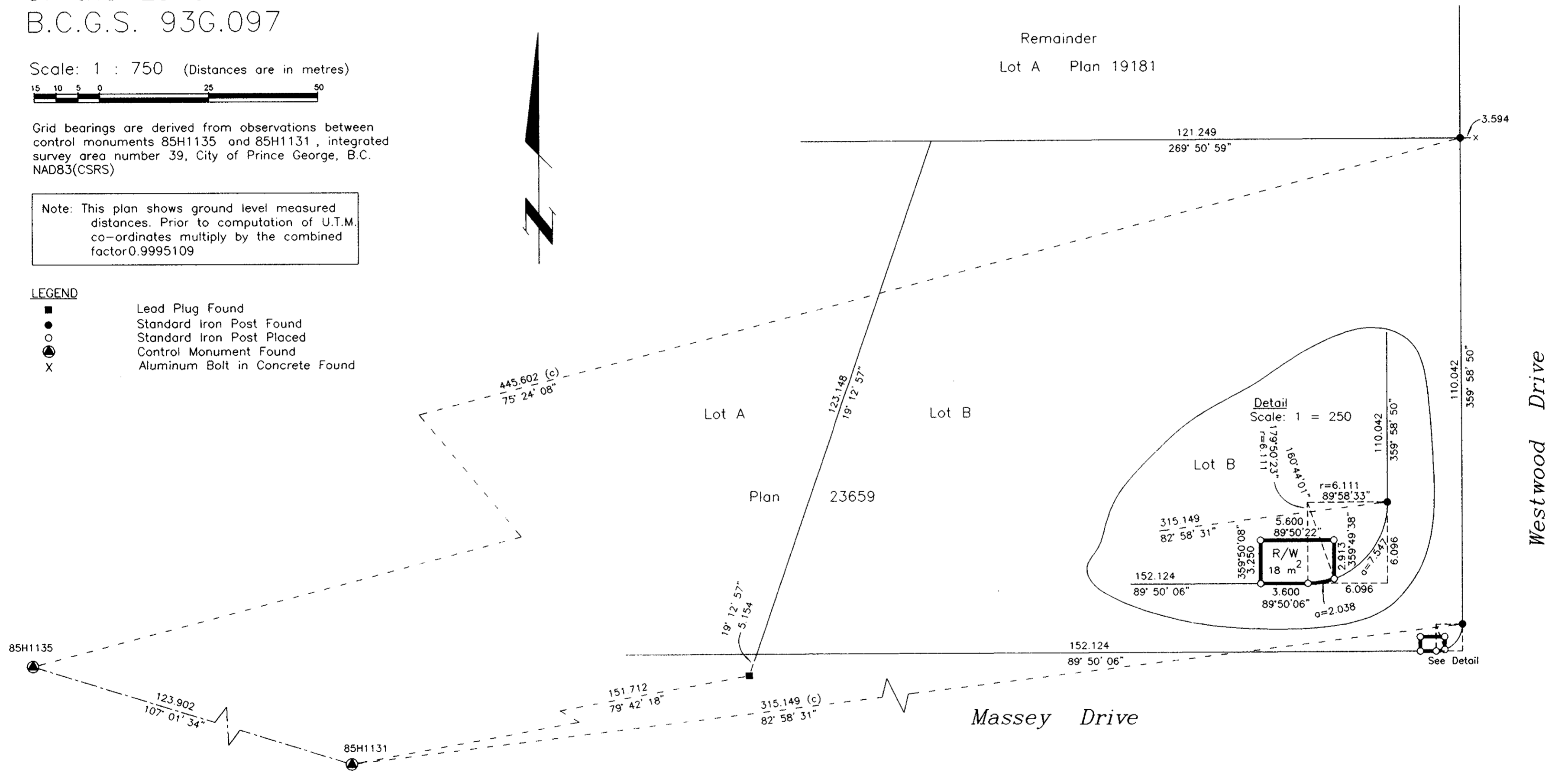
REFERENCE PLAN OF STATUTORY  
RIGHT OF WAY OVER PART OF  
LOT B, PLAN 23659,  
DISTRICT LOT 8170,  
CARIBOO DISTRICT.  
Pursuant to Section 113  
of the Land Title Act  
B.C.G.S. 93G.097

Scale: 1 : 750 (Distances are in metres)

Grid bearings are derived from observations between control monuments 85H1135 and 85H1131, integrated survey area number 39, City of Prince George, B.C. NAD83(CSRS)

Note: This plan shows ground level measured distances. Prior to computation of U.T.M. co-ordinates multiply by the combined factor 0.9995109

- LEGEND**
- Lead Plug Found
  - Standard Iron Post Found
  - Standard Iron Post Placed
  - ⊙ Control Monument Found
  - X Aluminum Bolt in Concrete Found



I, Gordon Kilbride, a British Columbia Land Surveyor, of Prince George, in British Columbia, certify that I was present at and personally superintended the survey represented by this plan, and that the survey and plan are correct. The survey was completed on the 28 day of March, 2003.

*Gordon Kilbride*  
Gordon Kilbride, B.C.L.S.

This plan lies within the Fraser-Fort George Regional District.

<b>KILBRIDE LAND SURVEYING LTD.</b> British Columbia Land Surveyors Prince George, B.C. Ph: (250) 562-1196 Fax: 562-3656		
F.B.- RA	D.L.- 8170	File No. - 030031