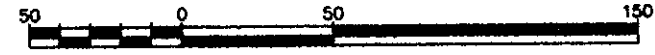


PLAN OF STATUTORY RIGHT OF WAY  
OVER PART OF LOT A, PLAN PGP39723,  
DISTRICT LOTS 2611, 2612, 2615 AND 2616,  
CARIBOO DISTRICT.

Pursuant to Section 113 of the Land Title Act.

B.C.G.S. 93G.096

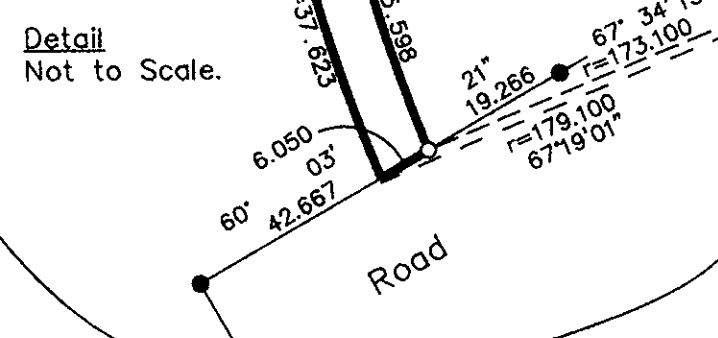
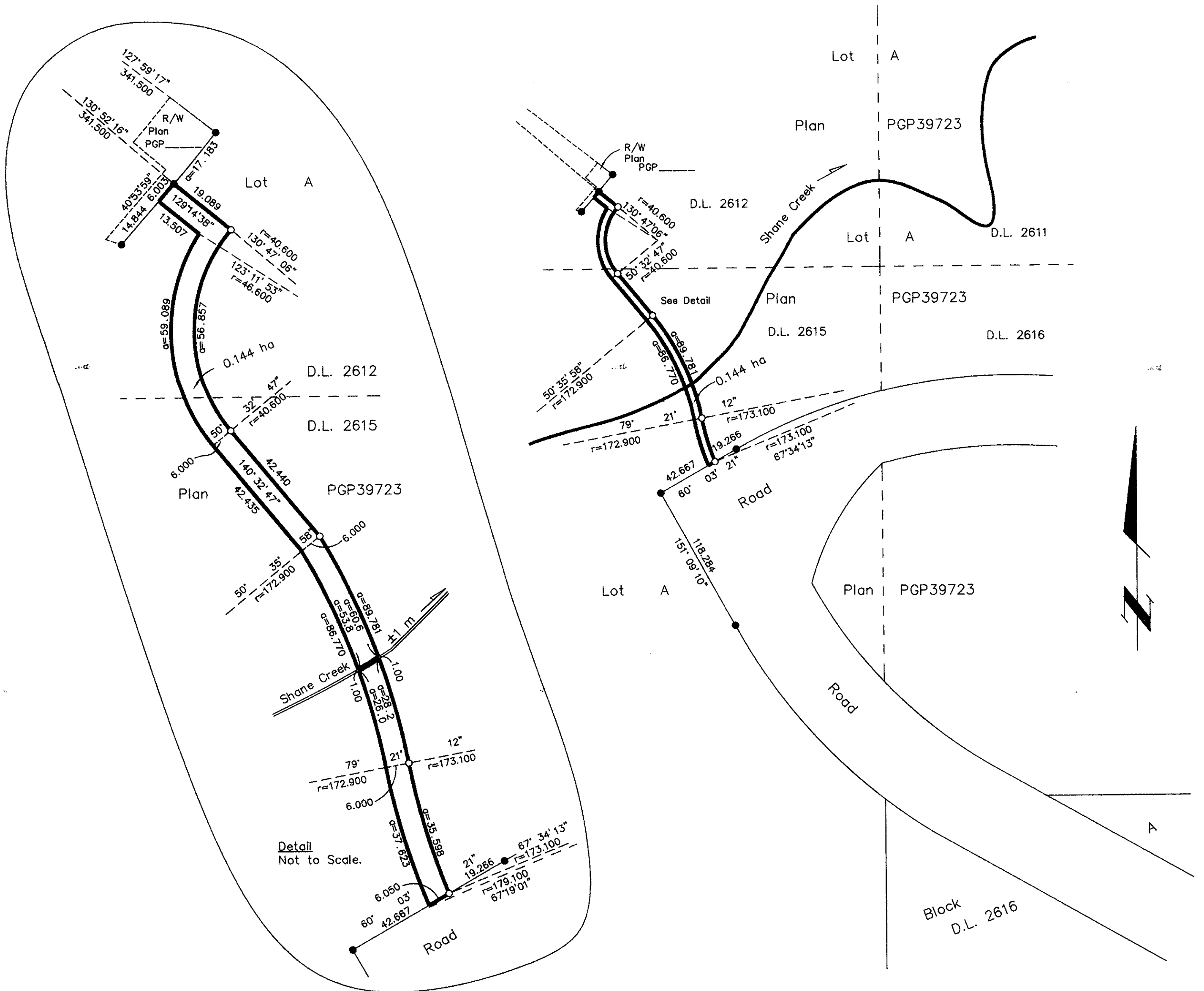
Scale: 1 : 2500 (Distances are in metres)



Bearings are astronomic, derived from  
Plan PGP39723 = 151°09'10"

LEGEND

- ⊙ Standard Capped Post Found
- Standard Iron Post Found
- Standard Iron Post Placed



PLAN NO. BCP 7075

6V351369  
R.C.

Deposited in the Land Title Office at New  
Westminster this 2 day of Sept 2003.

*Brian Bugis per M*  
REGISTRAR

I, Gordon Kilbride, a British Columbia Land Surveyor of  
Prince George in British Columbia, certify that I was  
present at and personally superintended the survey  
represented by this plan and that the survey and plan  
are correct. The survey was completed on the 15th day  
of January, 1999.

*Gordon Kilbride*  
Gordon Kilbride, B.C.L.S.

This plan lies within the Fraser-Fort  
George Regional District.

KILBRIDE LAND SURVEYING LTD. British Columbia Land Surveyors Prince George, B.C. Ph: (250) 562-1196 Fax: 562-3656		
F.B.- RA	D.L.- 2612	REF. NO.- 990017