

PLAN OF SUBDIVISION OF  
PART OF LOT 47, PLAN 22108,  
DISTRICT LOTS 482 AND 2507,  
CARIBOO DISTRICT.  
B.C.G.S. 93G.097

PLAN NO. BCP 6928

Deposited in the Land Title Office at New  
Westminster this 22 day of August 2003.

Grid bearings are derived from observations between  
control monuments 85H1238 and 85H1204, integrated  
survey area number 39, City of Prince George, B.C.  
NAD83(CSRS)

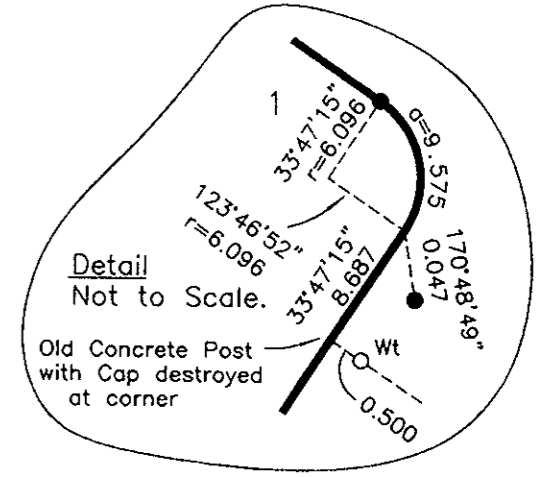
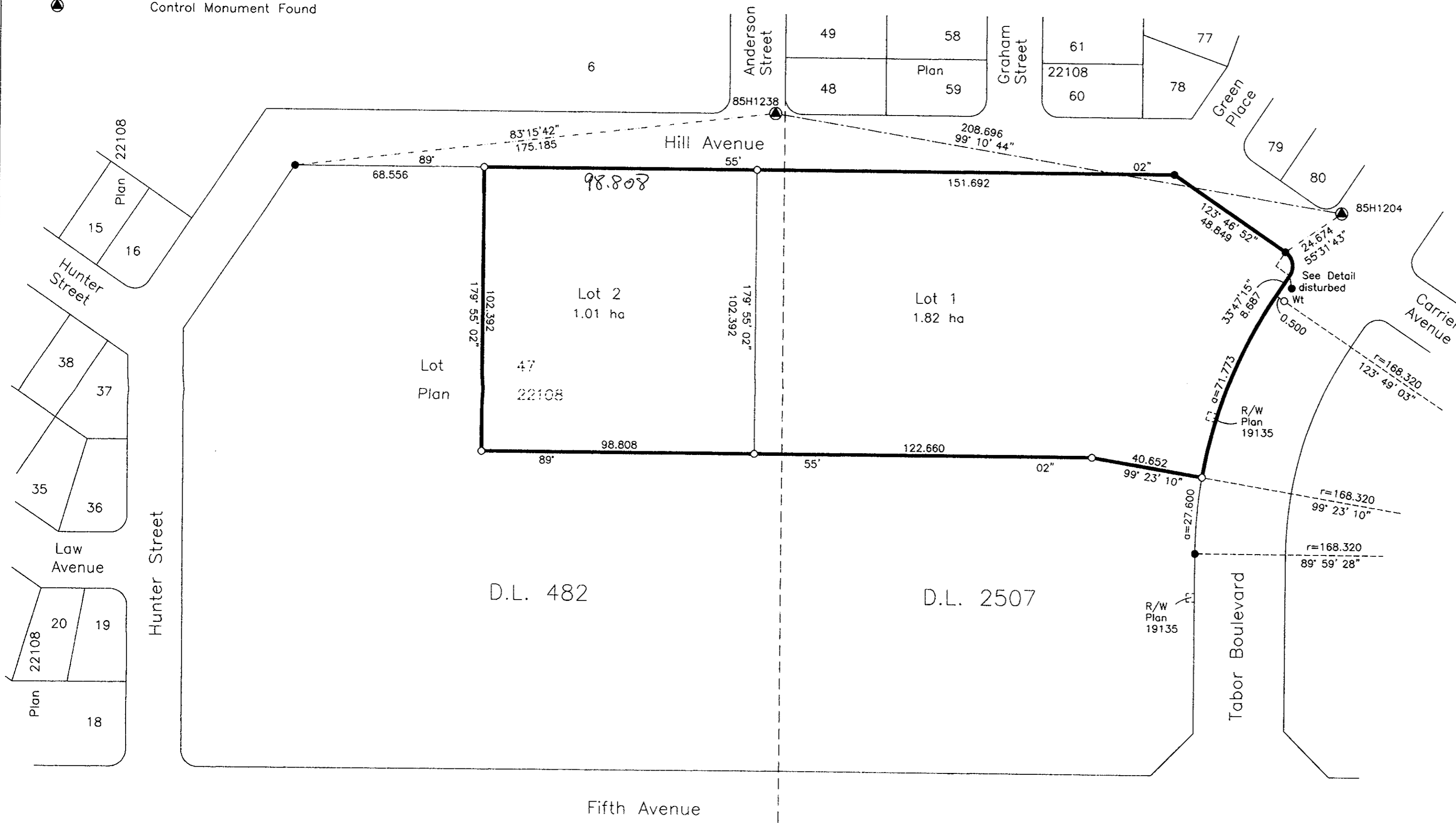
Scale: 1 : 1250 (Distances are in metres)



Note: This plan shows ground level measured  
distances. Prior to computation of U.T.M.  
co-ordinates multiply by the combined  
factor 0.9995092

- LEGEND**
- Standard Iron Post Found
  - Standard Iron Post Placed
  - ⊙ Control Monument Found

REGISTRAR



I, Gordon Kilbride, a British Columbia Land Surveyor, of  
Prince George, in British Columbia, certify that I was  
present at and personally superintended the survey  
represented by this plan, and that the survey and plan  
are correct. The field survey was completed on the 21 day  
of July, 2003. The plan was completed and  
checked, and the checklist filed under # 3578, on the  
22 day of July, 2003.

Owner: City of Prince George

Authorized Signatory: *[Signature]*  
Print Name: Jane Petrella  
Authorized Signatory: *[Signature]*  
Print Name: Don Schaffar

Witness to both: *[Signature]*  
Print Name: Jan Wells  
Address: 1100 Patricia Boulevard  
Prince George, BC V2L 3V9  
Occupation: Manager Real Estate

*[Signature]*  
Gordon Kilbride, B.C.L.S.

Approved under the Land Title Act this 13<sup>th</sup> day of  
August 2003  
*[Signature]*  
Approving Officer  
City of Prince George

This plan lies within the Fraser-Fort  
George Regional District.

**KILBRIDE LAND SURVEYING LTD.**  
British Columbia Land Surveyors  
Prince George, B.C.  
Ph: (250) 562-1196 Fax: 562-3656  
F.B.- WS 55 | D.L.- 2507 | File No. - 030082S