

REFERENCE PLAN OF CONSOLIDATION OF  
 LOT 14, BLOCK 131, PLAN 1268 AND  
 CLOSED ROAD PLAN BCP3339,  
**DISTRICT LOT 343**  
 CARIBOO DISTRICT

PLAN No. BCP 6487

DEPOSITED IN THE LAND TITLE OFFICE  
 AT NEW WESTMINSTER, B.C., THIS 25  
 DAY OF JULY, 2003

REGISTRAR

*BSJ 286662*

B.C.G.S. 93G.097

PURSUANT TO SECTION 100(1)(b) OF THE LAND TITLE ACT.



SCALE = 1 : 750

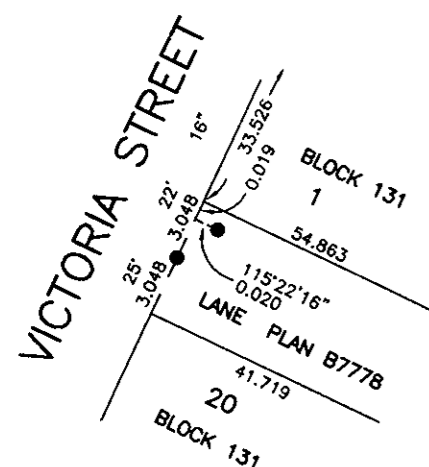
ALL DISTANCES SHOWN ARE IN METRES.

THIS PLAN SHOWS GROUND-LEVEL MEASURED DISTANCES.  
 PRIOR TO COMPUTATION OF U.T.M. COORDINATES, MULTIPLY  
 BY COMBINED FACTOR 0.9995156.

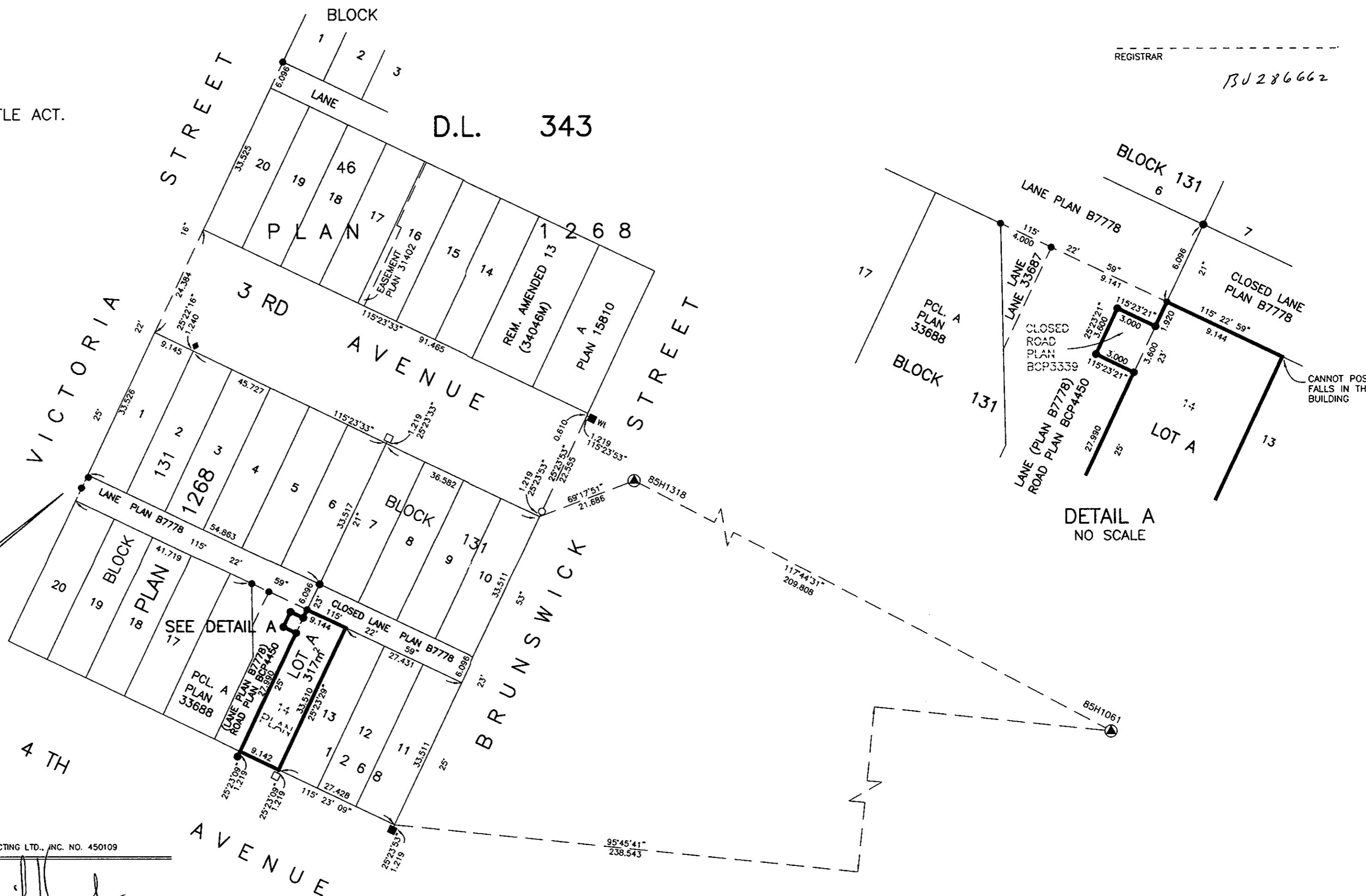
GRID BEARINGS ARE DERIVED FROM OBSERVATIONS  
 BETWEEN CONTROL MONUMENTS 85H1318, AND 85H1061,  
 INTEGRATED SURVEY AREA NUMBER 39, PRINCE GEORGE.

LEGEND

- STANDARD IRON POST FOUND
- STANDARD IRON POST PLACED
- STANDARD LEAD PLUG FOUND
- STANDARD LEAD PLUG PLACED
- ◆ ALUMINUM BOLT FOUND
- ⊙ CONTROL MONUMENT



DETAIL  
 NO SCALE



DETAIL A  
 NO SCALE

NOVAK BROS. CONTRACTING LTD., INC. NO. 450109

*[Signature]*  
 AUTHORIZED SIGNATORY

PRINT NAME

AUTHORIZED SIGNATORY

PRINT NAME

WITNESS (AS TO BOTH SIGNATURES)

PRINT NAME

ADDRESS

OCCUPATION

I, RONALD L. JOHNS, A BRITISH COLUMBIA LAND SURVEYOR, OF PRINCE GEORGE, IN BRITISH COLUMBIA, CERTIFY THAT I WAS PRESENT AT AND PERSONALLY SUPERINTENDED THE SURVEY REPRESENTED BY THIS PLAN AND THAT THE SURVEY AND PLAN ARE CORRECT. THE SURVEY WAS COMPLETED ON THE 28TH DAY OF FEBRUARY, 2002.

*[Signature]*  
 R.L. JOHNS, B.C.L.S., C.L.S.

THIS PLAN LIES WITHIN THE FRASER-FORT GEORGE REGIONAL DISTRICT.

R. L. JOHNS LAND SURVEYING LTD.  
 LEGAL AND ENGINEERING SURVEYS  
 240 VICTORIA STREET  
 PRINCE GEORGE, B. C. V2L 2J4  
 PHONE: (250)562-5759  
 FAX: (250)562-5703  
 2002024C-1 BB7-23