

**EXPLANATORY PLAN OF EASEMENT
OVER PART OF LOT 1, PLAN 30757,
DISTRICT LOT 936, CARIBOO DISTRICT.
Pursuant to Section 99(1)(e) of the
Land Title Act.
B.C.G.S. 93G.097**

PLAN NO. BCP 6230

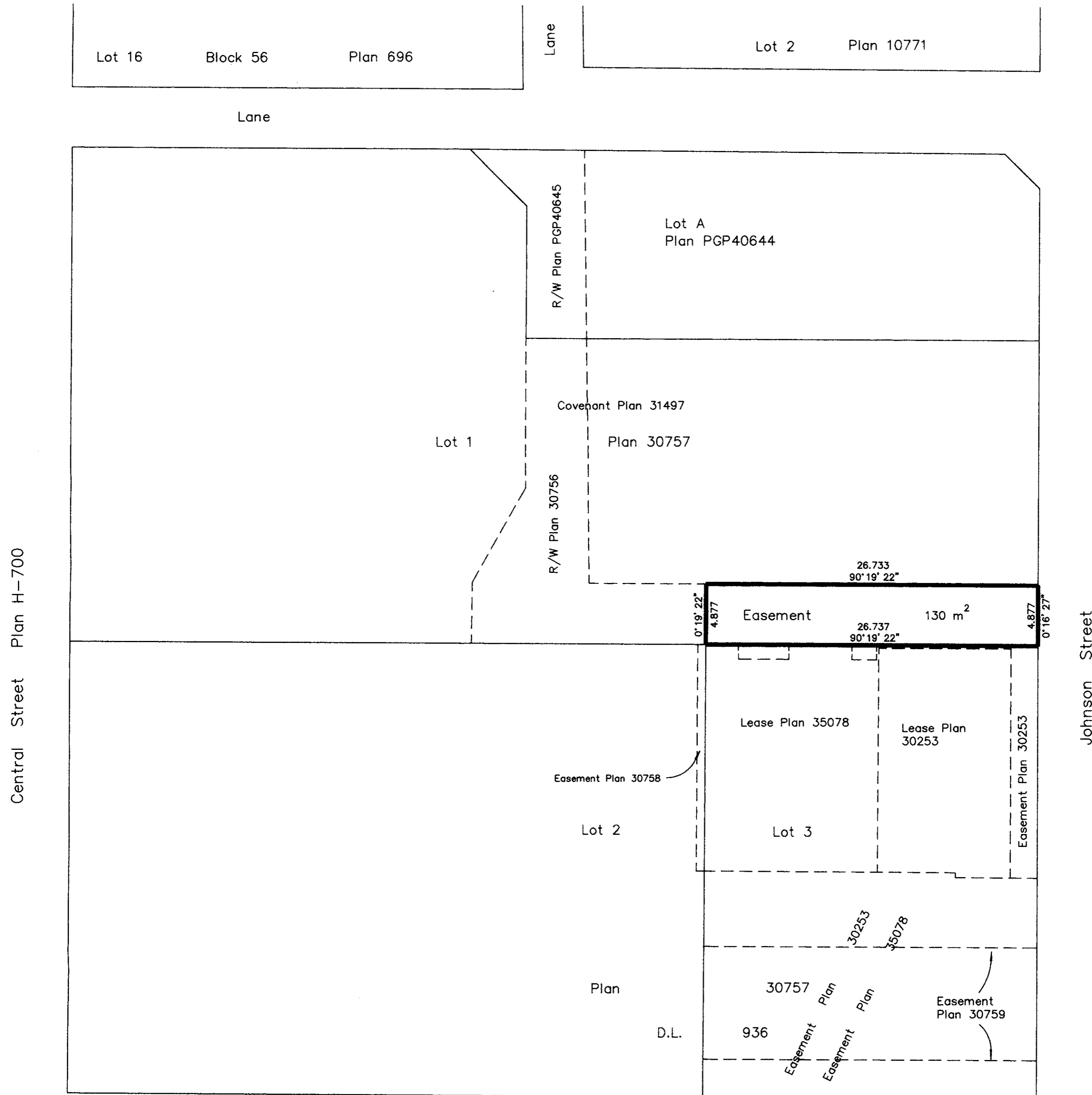
Deposited in the Land Title Office at New
Westminster this 12 day of *July*, 2003

REGISTRAR

Scale: 1 : 250 (Distances are in metres)



Bearings are astronomic, derived from
Plan 30757



Certified Correct, according to
Land Title Office Records.
This 12 day of December, 2002.

Gordon Kilbride
Gordon Kilbride, B.C.L.S.

15th Avenue

This plan lies within the Fraser-Fort
George Regional District.

KILBRIDE LAND SURVEYING LTD. British Columbia Land Surveyors Prince George, B.C. Ph: (250) 562-1196 Fax: 562-3656		
F.B.	D.L. 936	File No. 020225