

REFERENCE PLAN OF STATUTORY
RIGHT OF WAY ON LOT B,
PLAN 30171, DISTRICT LOT 4039,
CARIBOO DISTRICT.

Pursuant to Section 113 of
the Land Title Act.

B.C.G.S. 93G.097

Scale: 1 : 1000 (Distances are in metres)



Note: This plan shows ground level measured
distances. Prior to computation of U.T.M.
co-ordinates multiply by the combined
factor 0.9994967

Grid bearings are derived from observations between
control monuments 86H1581 and 86H1592, integrated
survey area number 39, City of Prince George, B.C.
NAD83(CSRS)

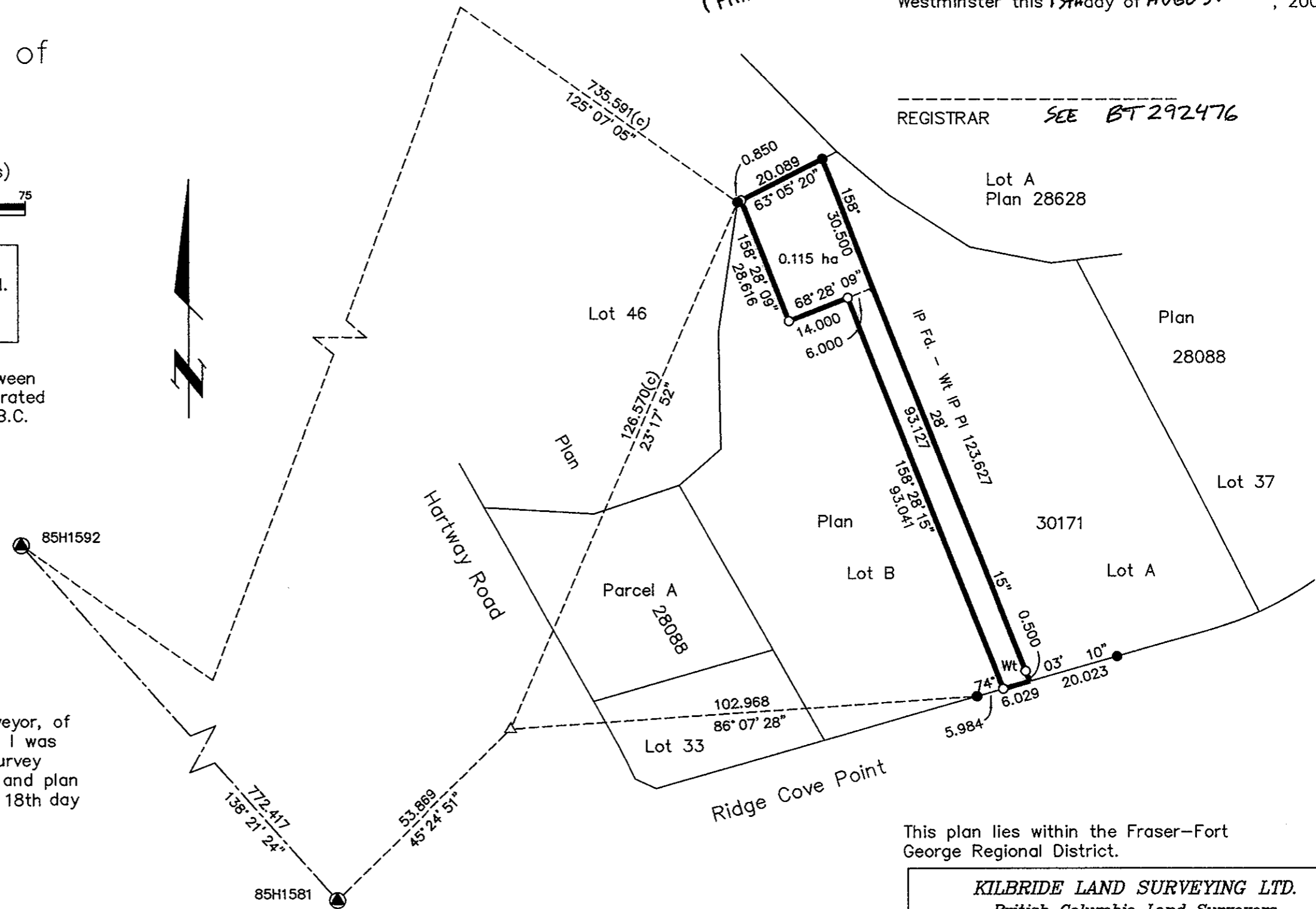
LEGEND

- Standard Iron Post Found
- Standard Iron Post Placed
- ⊙ Control Monument Found
- △ Traverse Hub Placed

I, Dale L. Keown, a British Columbia Land Surveyor, of
Prince George, in British Columbia, certify that I was
present at and personally superintended the survey
represented by this plan, and that the survey and plan
are correct. The survey was completed on the 18th day
of July, 2002.

Dale Keown

Dale L. Keown, B.C.L.S.



RECEIVED
SEP 30 2002
BC ASSESSMENT
(PRINCE GEORGE)

PLAN NO. BCP 00607

Deposited in the Land Title Office at New
Westminster this 13th day of AUGUST, 2002.

REGISTRAR SEE BT 292476

This plan lies within the Fraser-Fort
George Regional District.

KILBRIDE LAND SURVEYING LTD.

British Columbia Land Surveyors

Prince George, B.C.

Ph: (250) 562-1196 Fax: 562-3656

F.B. WN62	D.L. 4039	File No. 010149RW
-----------	-----------	-------------------