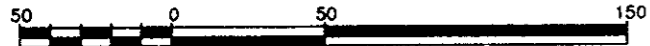


EXPLANATORY PLAN OF EASEMENT WITHIN
 LOTS 1 AND 2, PLAN BCP 6048,
 DISTRICT LOT 1544, CARIBOO DISTRICT.

Pursuant to Section 99
 of the Land Title Act.

B.C.G.S. 93G.087

Scale: 1 : 2500 (Distances are in metres)



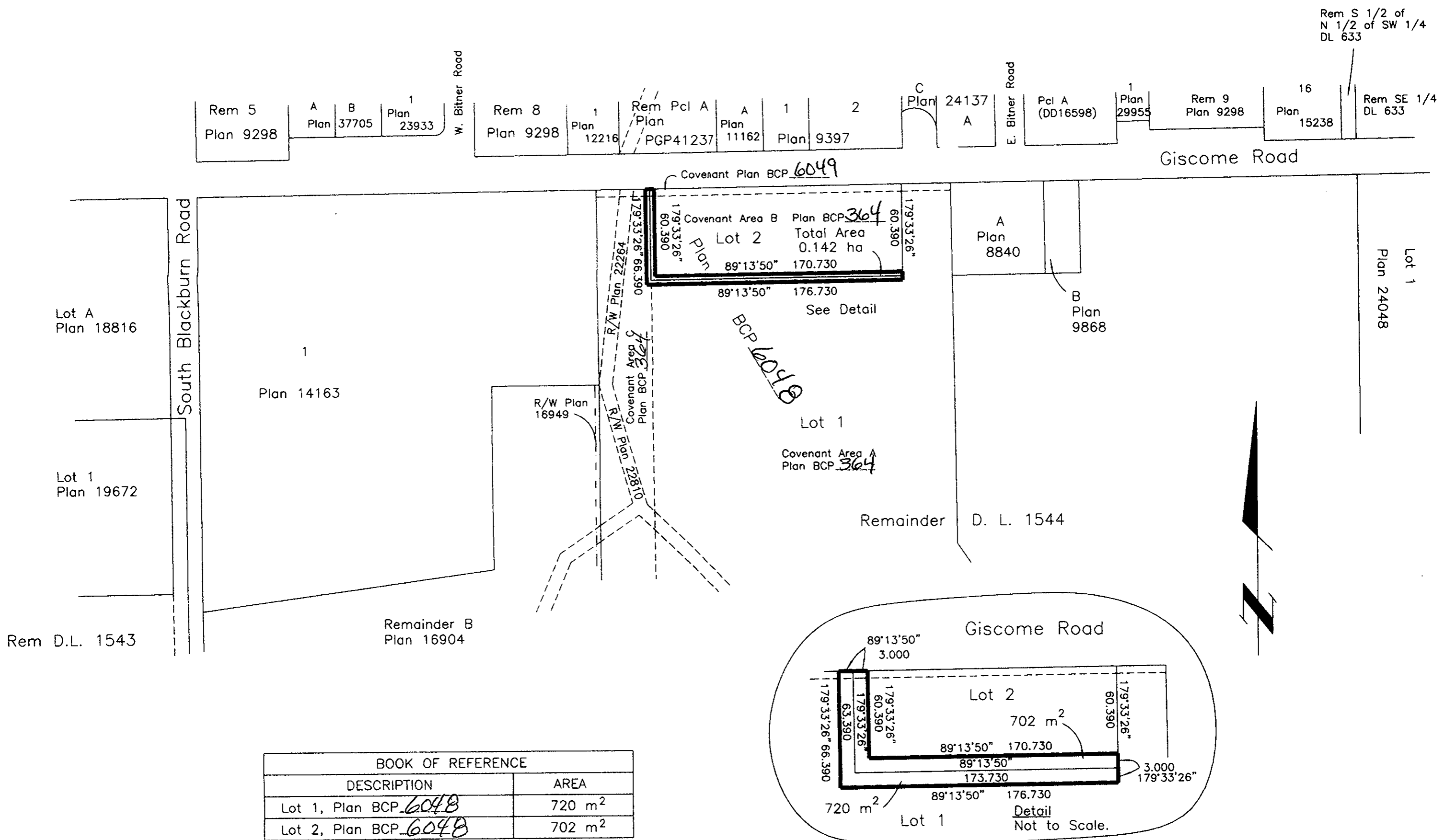
Bearings are astronomic, derived from
 Plan BCP _____.

PLAN NO. BCP 6050

Deposited in the Land Title Office at New
 Westminster this 04 day of July 2003

REGISTRAR

REF. # BV 254868A



Certified Correct, according to
 Land Title Office Records.
 This 18th day of June, 2002.

Gordon Kilbride
 Gordon Kilbride, B.C.L.S.

This plan lies within the Fraser-Fort
 George Regional District.

KILBRIDE LAND SURVEYING LTD.
 British Columbia Land Surveyors
 Prince George, B.C.
 Ph: (250) 562-1196 Fax: 562-3656

F.B.	D.L. 1544	File No. 020092E
------	-----------	------------------