

REFERENCE PLAN OF COVENANT AREAS
ON LOTS 1 AND 2, PLAN BCP 6048,
DISTRICT LOT 1544, CARIBOO DISTRICT.

Pursuant to Section 99(1)(e) of the
Land Title Act.

B.C.G.S. 93G.087

Scale: 1 : 2500 (Distances are in metres)



LEGEND

- ⊙ Standard Capped Post Found
- Standard Iron Post Found
- ⊕ Control Monument Found

Note: This plan shows ground level measured distances. Prior to computation of U.T.M. co-ordinates multiply by the combined factor 0.9995020

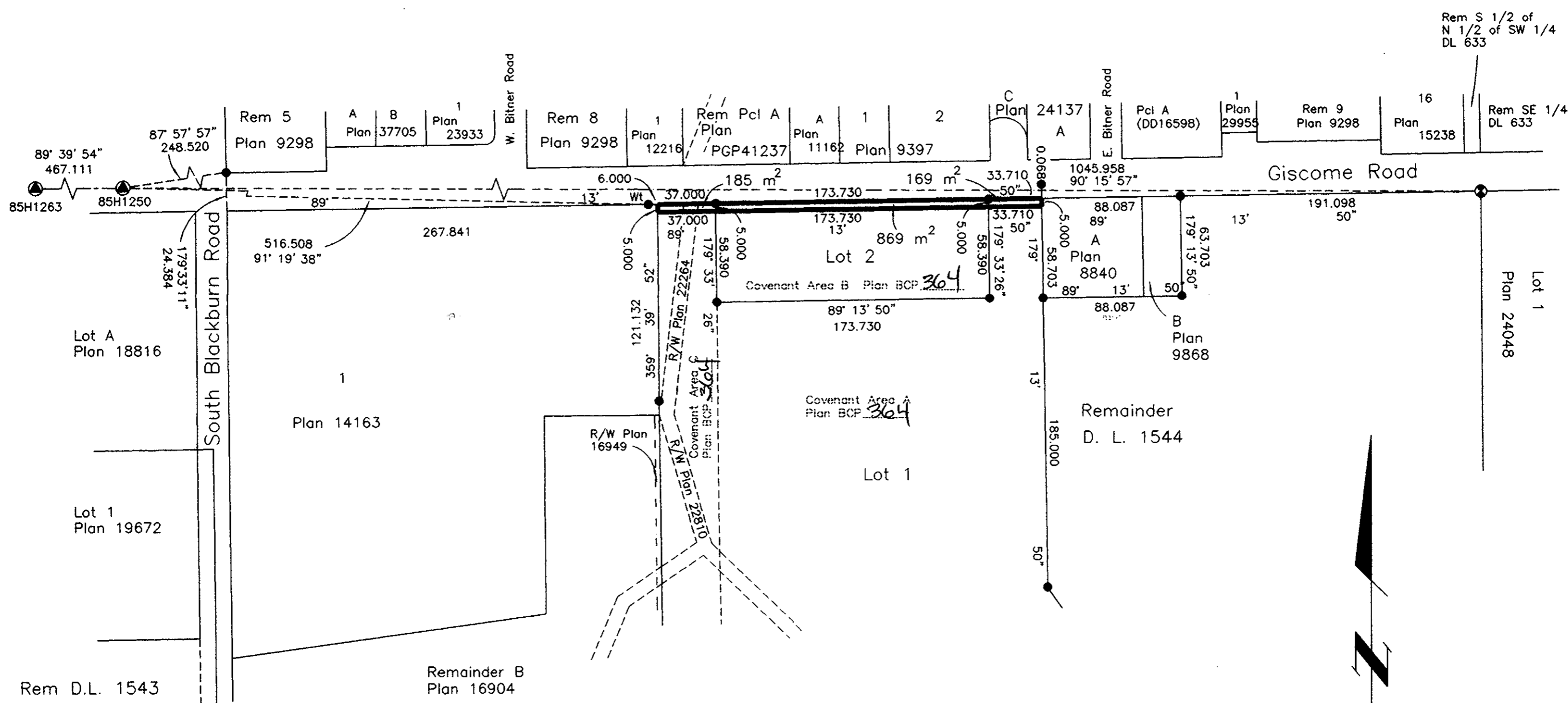
Grid bearings are derived from observations between control monuments 85H1263 and 85H1250, integrated survey area number 39, City of Prince George, B.C. NAD83(CSRS)

PLAN NO. BCP 6049

Deposited in the Land Title Office at New
Westminster this 04 day of July, 2003

REGISTRAR

REF. # BV254866



I, Gordon Kilbride, a British Columbia Land Surveyor, of Prince George, in British Columbia, certify that I was present at and personally superintended the survey represented by this plan, and that the survey and plan are correct. The survey was completed on the 18 day of June, 2002.

Gordon Kilbride
Gordon Kilbride, B.C.L.S.

This plan lies within the Fraser-Fort
George Regional District.

KILBRIDE LAND SURVEYING LTD.
British Columbia Land Surveyors
Prince George, B.C.
Ph: (250) 562-1196 Fax: 562-3656

F.B. W063 | D.L. 1544 | File No. 020092S