

REFERENCE PLAN TO ACCOMPANY
CITY OF PRINCE GEORGE BYLAW 7466
CLOSING PART OF CAMERON STREET
ADJACENT TO LOT 1, BLOCK 49,
PLAN 1268, DISTRICT LOT 343,
CARIBOO DISTRICT.

Pursuant to Section 120 of the Land Title Act
and Section 304 of the Local Government Act.
B.C.G.S. 93G.097

PLAN NO. BCP-5824

Deposited in the Land Title Office at New
Westminster this 18th day of June 2003.

REGISTRAR
BV224554

Scale: 1 : 750 (Distances are in metres)

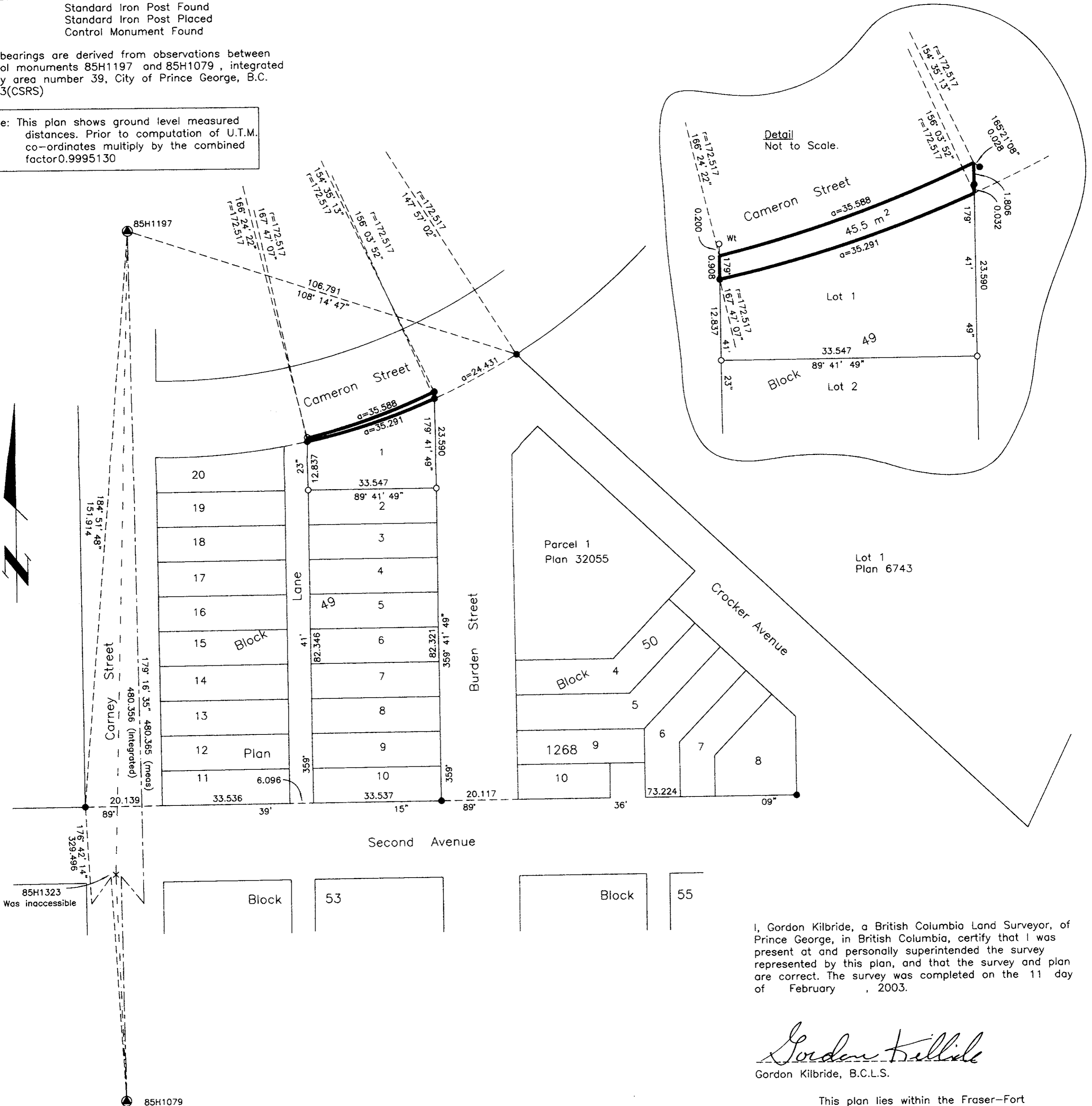


LEGEND

- Standard Iron Post Found
- Standard Iron Post Placed
- ⊙ Control Monument Found

Grid bearings are derived from observations between
control monuments 85H1197 and 85H1079, integrated
survey area number 39, City of Prince George, B.C.
NAD83(CSRS)

Note: This plan shows ground level measured
distances. Prior to computation of U.T.M.
co-ordinates multiply by the combined
factor 0.9995130



I, Gordon Kilbride, a British Columbia Land Surveyor, of
Prince George, in British Columbia, certify that I was
present at and personally supervised the survey
represented by this plan, and that the survey and plan
are correct. The survey was completed on the 11 day
of February, 2003.

Gordon Kilbride
Gordon Kilbride, B.C.L.S.

This plan lies within the Fraser-Fort
George Regional District.

KILBRIDE LAND SURVEYING LTD.
British Columbia Land Surveyors
Prince George, B.C.
Ph: (250) 562-1196 Fax: 562-3656

F.B.- RA D.L.- 343(49) File No. - 030004