

EXPLANATORY PLAN TO ACCOMPANY
 A COVENANT OVER PART OF
 PARCEL 1, PLAN BCP 4513,
 DISTRICT LOTS 753 AND 2003,
 CARIBOO DISTRICT.

Deposited in the Land Title Office at New
 Westminster this 29th day of May 2003.

REGISTRAR BV194394

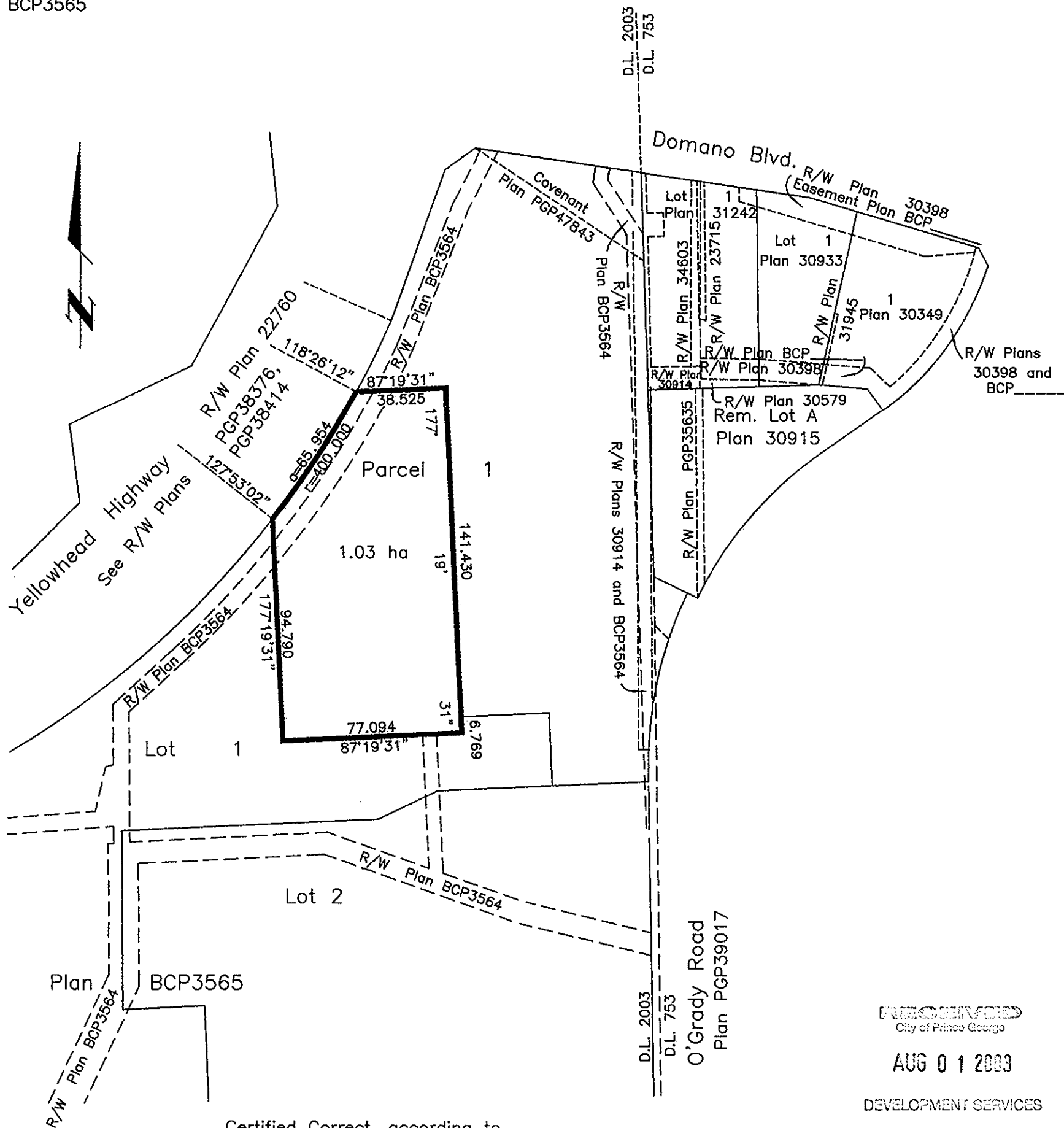
~~Pursuant to Section 219
 of the Land Title Act.~~

B.C.G.S. 93G.097

Scale: 1 : 2000 (Distances are in metres)



Bearings are astronomic, derived from
 Plan BCP3565



Certified Correct, according to
 Land Title Office Records.
 This 10th day of February, 2003.

Gordon Kilbride
 Gordon Kilbride, B.C.L.S.

This plan lies within the Fraser-Fort
 George Regional District.

RECEIVED
 City of Prince George

AUG 01 2003

DEVELOPMENT SERVICES

KILBRIDE LAND SURVEYING LTD. British Columbia Land Surveyors Prince George, B.C. Ph: (250) 562-1196 Fax: 562-3656		
F.B.-	D.L.- 2003	File No. - 020167C4