

REFERENCE PLAN TO ACCOMPANY
A RESTRICTIVE COVENANT ON
PART OF REM. LOT A, PLAN 17970
DISTRICT LOT 2400
CARIBOO DISTRICT

B.C.G.S. 93G.096



SCALE = 1 : 2500
ALL DISTANCES SHOWN ARE IN METRES.

THIS PLAN SHOWS GROUND-LEVEL MEASURED DISTANCES.
PRIOR TO COMPUTATION OF U.T.M. COORDINATES, MULTIPLY
BY COMBINED FACTOR 0.9995107.

GRID BEARINGS ARE DERIVED FROM OBSERVATIONS
BETWEEN CONTROL MONUMENTS 86H1721 AND 86H1843
INTEGRATED SURVEY AREA NUMBER 39, PRINCE GEORGE.

LEGEND

- STANDARD IRON POST FOUND.
- STANDARD IRON POST PLACED.
- ⊙ STANDARD CAPPED POST FOUND.
- ▲ CONTROL MONUMENT.

05066

PLAN No. BCP _____

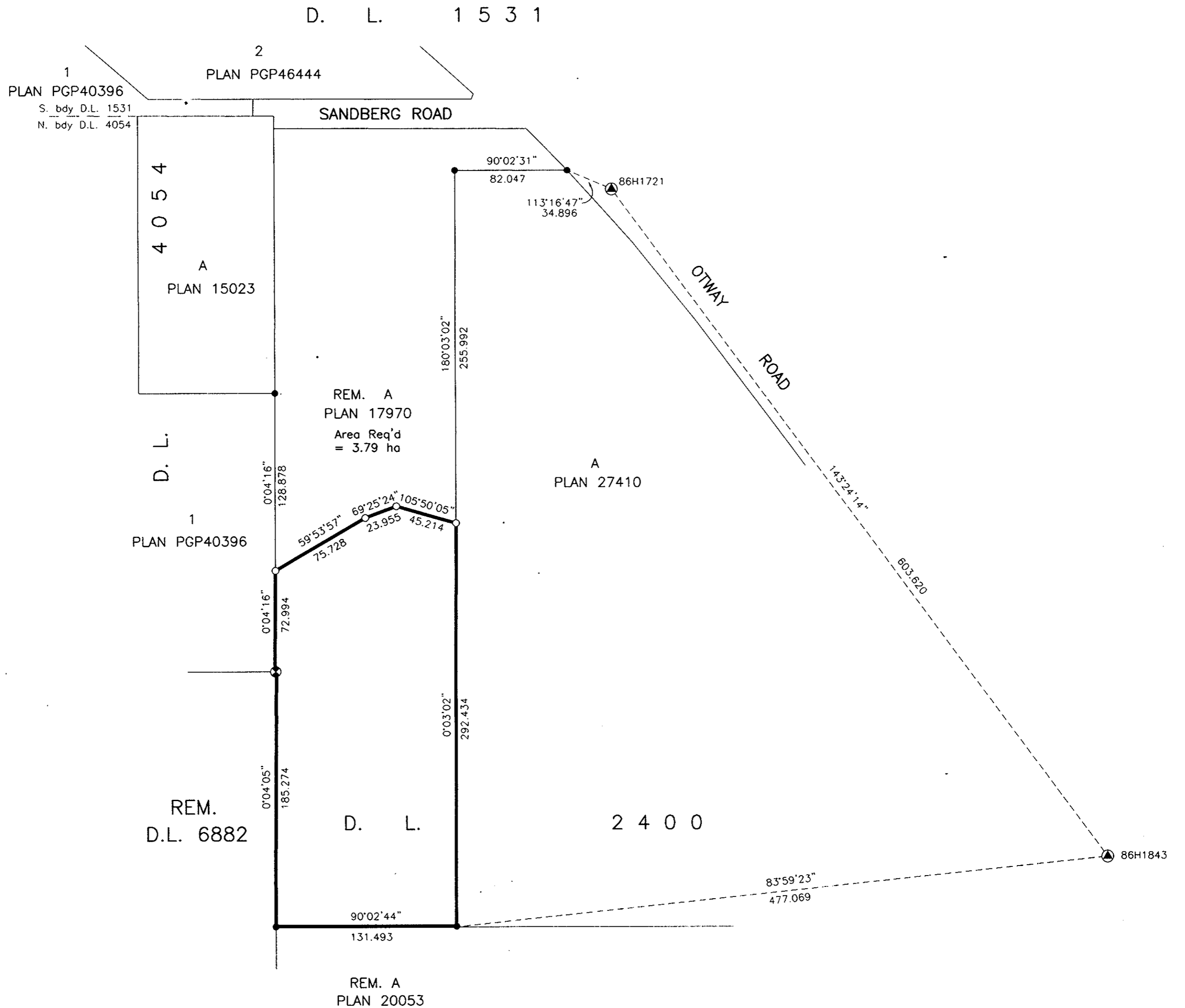
143476

DEPOSITED IN THE LAND TITLE OFFICE

AT NEW WESTMINSTER, B.C., THIS 28

DAY OF APRIL 2003

REGISTRAR



I, RONALD L. JOHNS, A BRITISH COLUMBIA LAND SURVEYOR, OF PRINCE GEORGE, IN BRITISH COLUMBIA, CERTIFY THAT I WAS PRESENT AT AND PERSONALLY SUPERINTENDED THE SURVEY REPRESENTED BY THIS PLAN AND THAT THE SURVEY AND PLAN ARE CORRECT. THE SURVEY WAS COMPLETED ON THE 9TH DAY OF OCTOBER, 2002.

R.L. Johns
R.L. JOHNS, B.C.L.S., C.L.S.

THIS PLAN LIES WITHIN THE FRASER-FORT GEORGE REGIONAL DISTRICT.

R. L. JOHNS LAND SURVEYING LTD.
LEGAL AND ENGINEERING SURVEYS
240 VICTORIA STREET
PRINCE GEORGE, B. C. V2L 2J4
PHONE: (250)562-5759
FAX: (250)562-5703

2002087R HH4-10-12