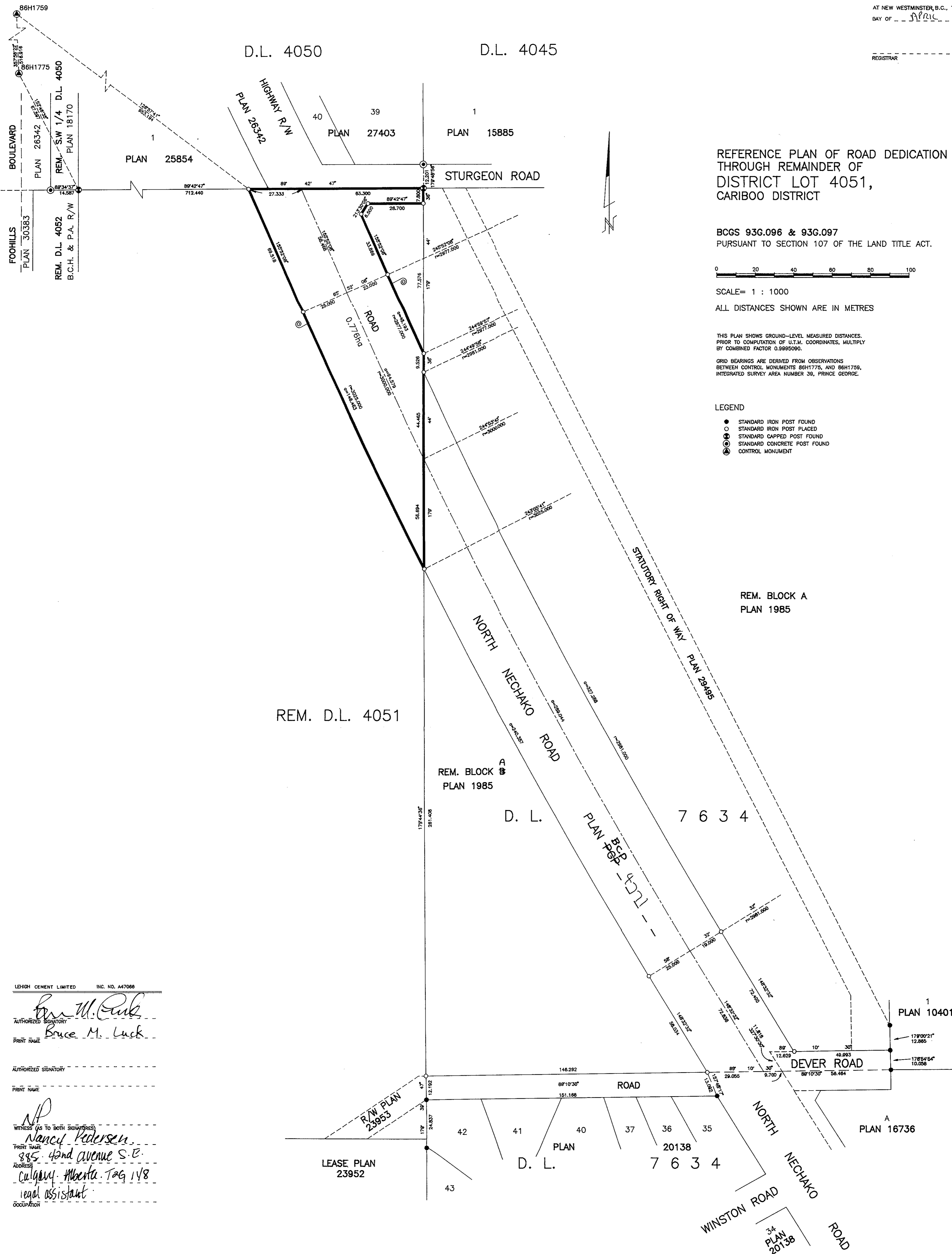


D.L. 4050

D.L. 4045



REFERENCE PLAN OF ROAD DEDICATION THROUGH REMAINDER OF DISTRICT LOT 4051, CARIBOO DISTRICT

BCGS 93G.096 & 93G.097 PURSUANT TO SECTION 107 OF THE LAND TITLE ACT.



SCALE= 1 : 1000

ALL DISTANCES SHOWN ARE IN METRES

THIS PLAN SHOWS GROUND-LEVEL MEASURED DISTANCES. PRIOR TO COMPUTATION OF U.T.M. COORDINATES, MULTIPLY BY COMBINED FACTOR 0.9995090. GRID BEARINGS ARE DERIVED FROM OBSERVATIONS BETWEEN CONTROL MONUMENTS 86H1775, AND 86H1759, INTEGRATED SURVEY AREA NUMBER 39, PRINCE GEORGE.

LEGEND

- STANDARD IRON POST FOUND
- STANDARD IRON POST PLACED
- ⊙ STANDARD CAPPED POST FOUND
- ⊚ STANDARD CONCRETE POST FOUND
- ⊛ CONTROL MONUMENT

REM. D.L. 4051

REM. BLOCK A PLAN 1985

REM. BLOCK A PLAN 1985

LEHIGH CEMENT LIMITED INC. NO. A47066

AUTHORIZED SIGNATORY: Bruce M. Luck

AUTHORIZED SIGNATORY: [Blank]

WITNESS (AS TO BOTH SIGNATORIES): Nancy Pedersen, 895 4th Avenue S.E., Calgary, Alberta, T2G 1V8, legal assistant

LEASE PLAN 23952

I, RONALD L. JOHNS, A BRITISH COLUMBIA LAND SURVEYOR, OF PRINCE GEORGE, IN BRITISH COLUMBIA, CERTIFY THAT I WAS PRESENT AT AND PERSONALLY SUPERINTENDED THE SURVEY REPRESENTED BY THIS PLAN AND THAT THE SURVEY AND PLAN ARE CORRECT. THE SURVEY WAS COMPLETED ON THE 6TH DAY OF NOVEMBER, 2001.

R.L. Johns, B.C.L.S., C.L.S.

APPROVED UNDER THE LAND TITLE ACT THIS 13th DAY OF February, 2003. [Signature] APPROVING OFFICER, CITY OF PRINCE GEORGE.

THIS PLAN LIES WITHIN THE FRASER-FORT GEORGE REGIONAL DISTRICT.

R. L. JOHNS LAND SURVEYING LTD. LEGAL AND ENGINEERING SURVEYS 240 VICTORIA STREET PRINCE GEORGE, B. C. V2L 2J4 PHONE: (250)562-5755 FAX: (250)562-5703 2001103A HH3-4-8