

PLAN OF SUBDIVISION
OF PART OF REM. OF
LOT A, PLAN 29327
DISTRICT LOT 4048
CARIBOO DISTRICT

B.C.G.S. 93G.096

04700

PLAN No. BCP _____

DEPOSITED IN THE LAND TITLE OFFICE
AT NEW WESTMINSTER, B.C., THIS _____
DAY OF _____, 20____



SCALE = 1 : 1000

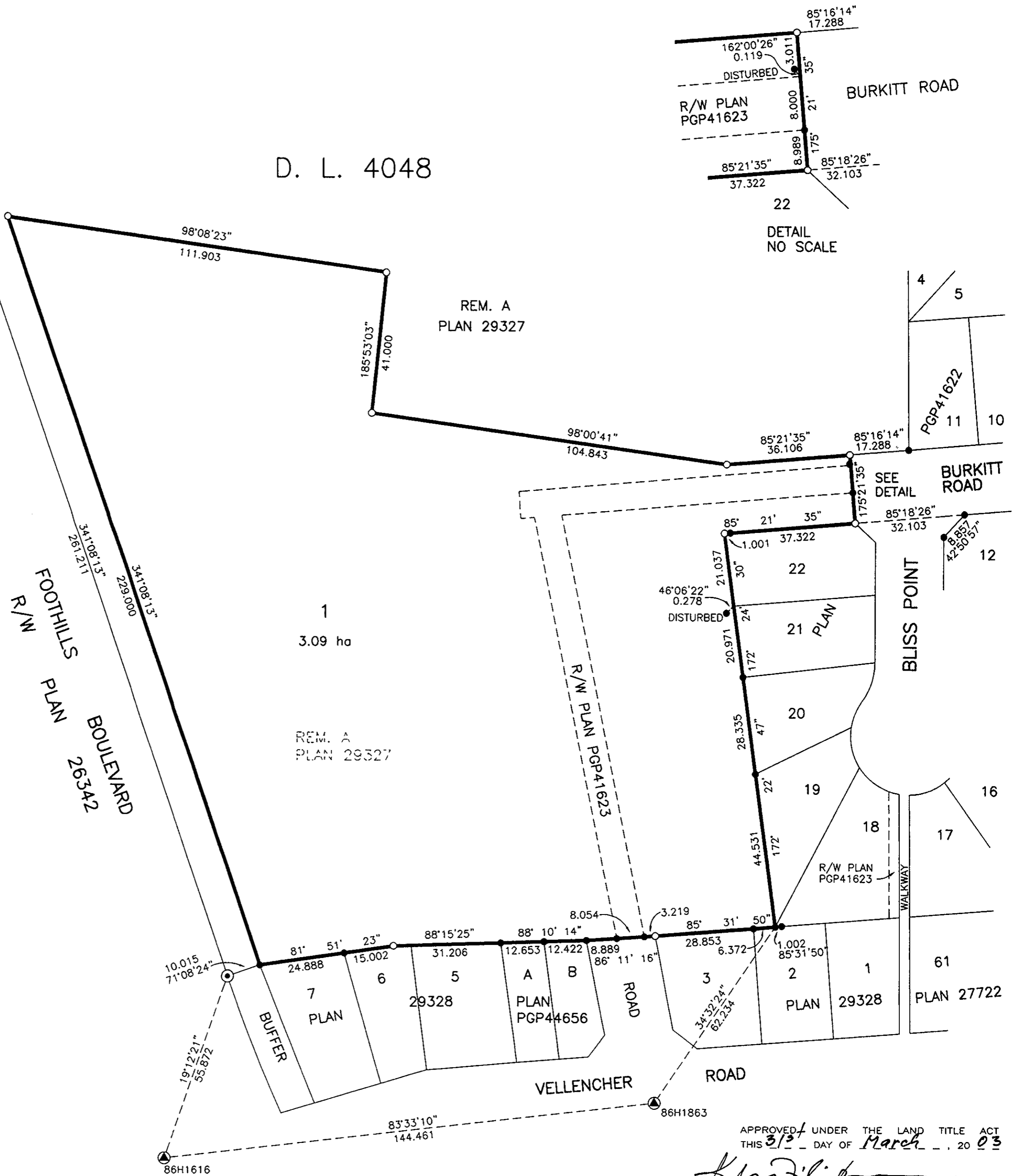
ALL DISTANCES SHOWN ARE IN METRES.

THIS PLAN SHOWS GROUND-LEVEL MEASURED DISTANCES.
PRIOR TO COMPUTATION OF U.T.M. COORDINATES, MULTIPLY
BY COMBINED FACTOR 0.9994794.

GRID BEARINGS ARE DERIVED FROM OBSERVATIONS
BETWEEN CONTROL MONUMENTS 86H1616 AND 86H1863,
INTEGRATED SURVEY AREA NUMBER 39, PRINCE GEORGE.

LEGEND

- STANDARD IRON POST FOUND
- STANDARD IRON POST PLACED
- ▲ CONTROL MONUMENT
- ⊙ STANDARD CONCRETE POST FOUND



CITY OF PRINCE GEORGE

MAYOR: *[Signature]*
PRINT NAME: *[Name]*

CLERK: *[Signature]*
PRINT NAME: *[Name]*

WITNESS (AS TO BOTH SIGNATURES):
JUDY DIX
PRINT NAME: JUDY DIX

ADDRESS: City Hall
Prince George, BC

OCCUPATION: Assistant

APPROVED UNDER THE LAND TITLE ACT
THIS 31st DAY OF March, 20 03

[Signature]
APPROVING OFFICER, CITY OF PRINCE GEORGE

I, RONALD L. JOHNS, A BRITISH COLUMBIA LAND SURVEYOR, OF PRINCE GEORGE, IN BRITISH COLUMBIA, CERTIFY THAT I WAS PRESENT AT AND PERSONALLY SUPERINTENDED THE SURVEY REPRESENTED BY THIS PLAN AND THAT THE SURVEY AND PLAN ARE CORRECT. THE SURVEY WAS COMPLETED ON THE 17TH DAY OF FEBRUARY, 2003.

[Signature]
R.L. JOHNS, B.C.L.S., C.L.S.

THIS PLAN LIES WITHIN THE FRASER-FORT GEORGE REGIONAL DISTRICT.

R. L. JOHNS LAND SURVEYING LTD.
LEGAL AND ENGINEERING SURVEYS
240 VICTORIA STREET
PRINCE GEORGE, B. C. V2L 2J4
PHONE: (250)562-5759
FAX: (250)562-5703
20000505 EE3-1-4