

**REFERENCE PLAN OF STATUTORY RIGHT OF WAY OVER PART OF THE
N 1/2 OF THE NW 1/4 OF DL 754, CARIBOO DISTRICT, EXCEPT:
PLANS 20248, 22835, 22932, 26624, PGP39017, PGP42509 AND BCP7518.**

PLAN BCP 46876

DEPOSITED IN THE LAND TITLE OFFICE AT NEW WESTMINSTER, BC THIS 8 DAY OF December 2010

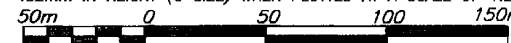
Larry Blaschuk per sm
REGISTRAR

ref: BB1724951

BCGS 93G.087
PURSUANT TO SECTION 113 OF THE LAND TITLE ACT.

THIS PLAN LIES WITHIN INTEGRATED SURVEY AREA No. 39, PRINCE GEORGE, NAD83 (CSRS)

THE INTENDED PLOT SIZE OF THIS PLAN IS 560mm IN WIDTH BY 432mm IN HEIGHT (C SIZE) WHEN PLOTTED AT A SCALE OF 1:2000



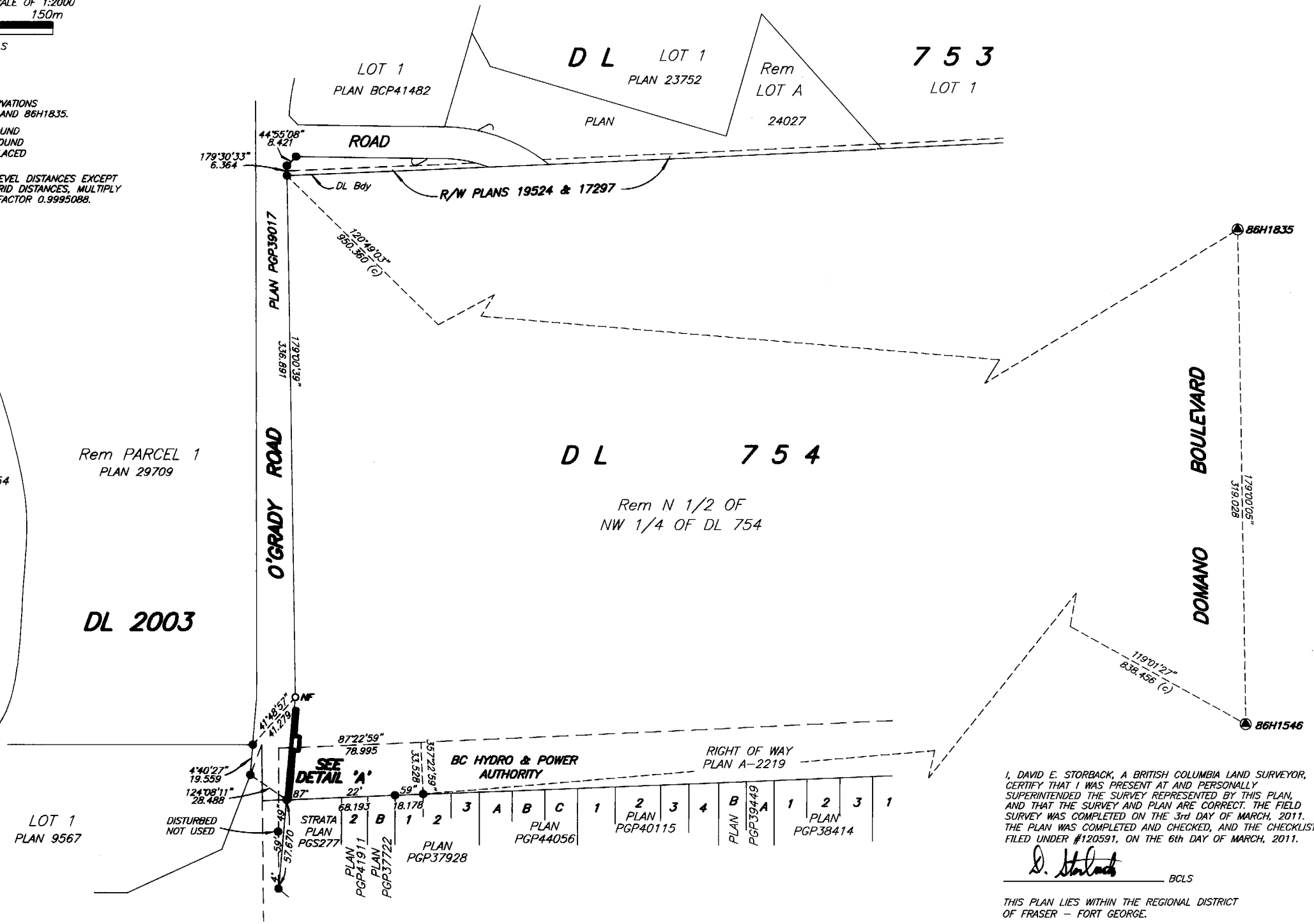
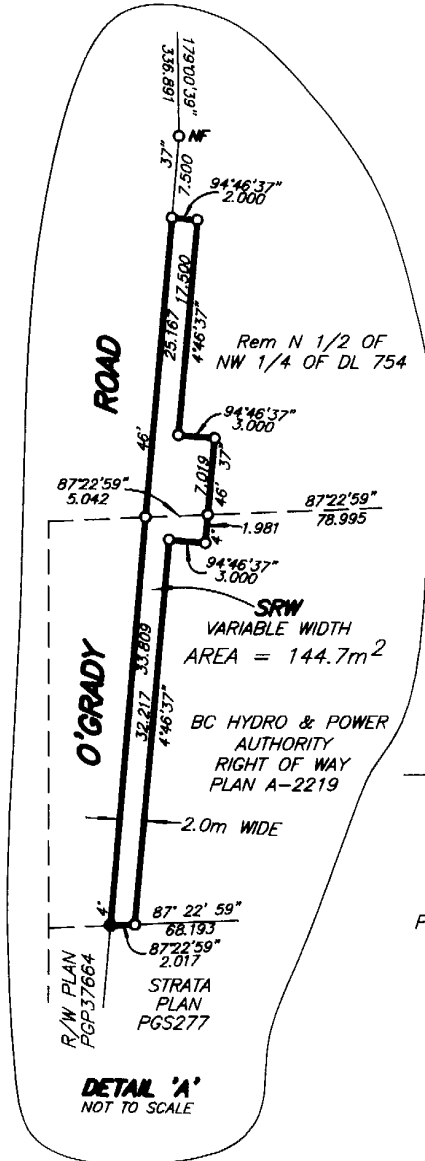
ALL DISTANCES ARE SHOWN IN METRES AND DECIMALS THEREOF, UNLESS OTHERWISE INDICATED.

LEGEND

GRID BEARINGS ARE DERIVED FROM OBSERVATIONS BETWEEN CONTROL MONUMENTS 86H1546 AND 86H1835.

- DENOTES CONTROL MONUMENT FOUND
- DENOTES STANDARD IRON POST FOUND
- DENOTES STANDARD IRON POST PLACED

THIS PLAN SHOWS HORIZONTAL GROUND-LEVEL DISTANCES EXCEPT WHERE OTHERWISE NOTED. TO COMPUTE GRID DISTANCES, MULTIPLY GROUND-LEVEL DISTANCES BY COMBINED FACTOR 0.9995088.



I, DAVID E. STORBACK, A BRITISH COLUMBIA LAND SURVEYOR, CERTIFY THAT I WAS PRESENT AT AND PERSONALLY SUPERINTENDED THE SURVEY REPRESENTED BY THIS PLAN, AND THAT THE SURVEY AND PLAN ARE CORRECT. THE FIELD SURVEY WAS COMPLETED ON THE 3rd DAY OF MARCH, 2011. THE PLAN WAS COMPLETED AND CHECKED, AND THE CHECKLIST FILED UNDER #120591, ON THE 6th DAY OF MARCH, 2011.

D. Storback BCLS

THIS PLAN LIES WITHIN THE REGIONAL DISTRICT OF FRASER - FORT GEORGE.

McElhanney
McElhanney Associates
Land Surveying Ltd.
Prince George, B.C.
Ph: (250) 561-2229 Fax: (250) 563-1941
D.L. - 754 File No. - 5884 SRW

ORIGINAL