

Deposited in the Land Title Office at New Westminster this 25 day of March 2003.

BN101090

REGISTRAR

REFERENCE PLAN OF THE REMAINDER LOT 3, PLAN PGP47842, DISTRICT LOTS 753 AND 2003, EXCEPT PLAN BCP3565, CARIBOO DISTRICT.

Pursuant to Section 100(1)(a) of the Land Title Act.

B.C.G.S. 93G.097

Scale: 1 : 2000 (Distances are in metres)

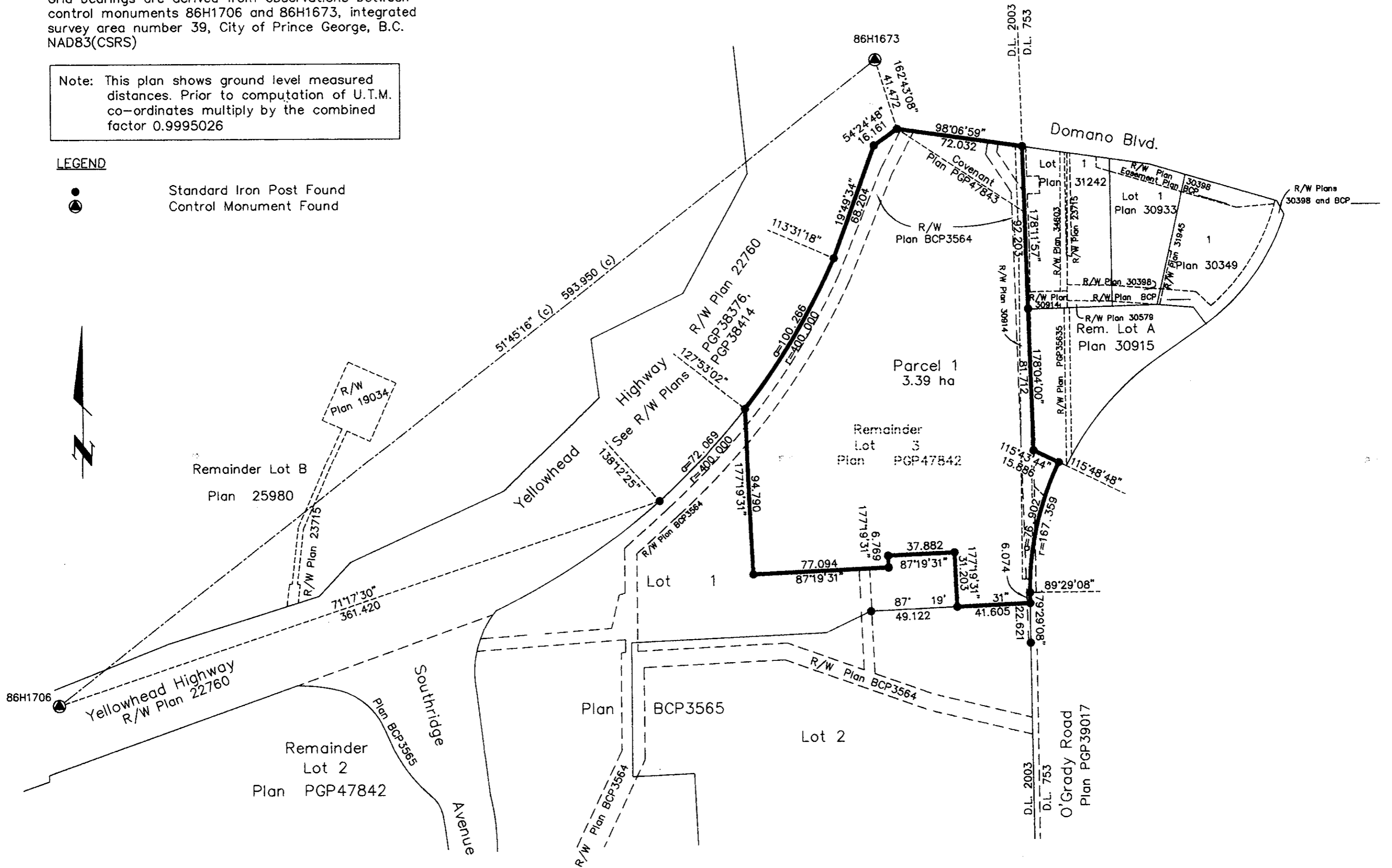


Grid bearings are derived from observations between control monuments 86H1706 and 86H1673, integrated survey area number 39, City of Prince George, B.C. NAD83(CSRS)

Note: This plan shows ground level measured distances. Prior to computation of U.T.M. co-ordinates multiply by the combined factor 0.9995026

LEGEND

- Standard Iron Post Found
- Control Monument Found



I, Gordon Kilbride, a British Columbia Land Surveyor, of Prince George, in British Columbia, certify that I was present at and personally superintended the survey represented by this plan, and that the survey and plan are correct. The survey was completed on the 18th day of November, 2002.

Gordon Kilbride
Gordon Kilbride, B.C.L.S.

Owner: First Prince George Developments Limited
Inc No. A56164

Mitchell Goldhar
Authorized Signatory
MITCHELL GOLDHAR
Print Name

Brian Rudderham
Authorized Signatory
BRIAN RUDDERHAM
Print Name

Anna Chow
Witness to both
ANNA CHOW
Print Name
212-3 EVERSON DR.
Address
TORONTO, ON M2N 7C2
Postal Code
LAW CLERK
Occupation

Approved under the Land Title Act this 18 day of March 2003

[Signature]
Approving Officer
City of Prince George

This plan lies within the Fraser-Fort George Regional District.

KILBRIDE LAND SURVEYING LTD.
British Columbia Land Surveyors
Prince George, B.C.
Ph: (250) 562-1196 Fax: 562-3656

F.B.- RA	D.L.-753/2003	File No. -020167S4
----------	---------------	--------------------