

REFERENCE PLAN OF EASEMENT
 WITHIN LOT 1, PLAN 30933, LOT 1, PLAN 30349
 AND LOT 1, PLAN 31242, DISTRICT LOT 753,
 CARIBOO DISTRICT.
 PREPARED PURSUANT TO SECTION 99 OF THE LAND TITLE ACT.
 B.C.G.S. 93G.087

PLAN NO. BCP 04511

Deposited in the Land Title Office at New
 Westminster this 25 day of March 2002

6/10/02

REGISTRAR

Scale: 1 : 500 (Distances are in metres)

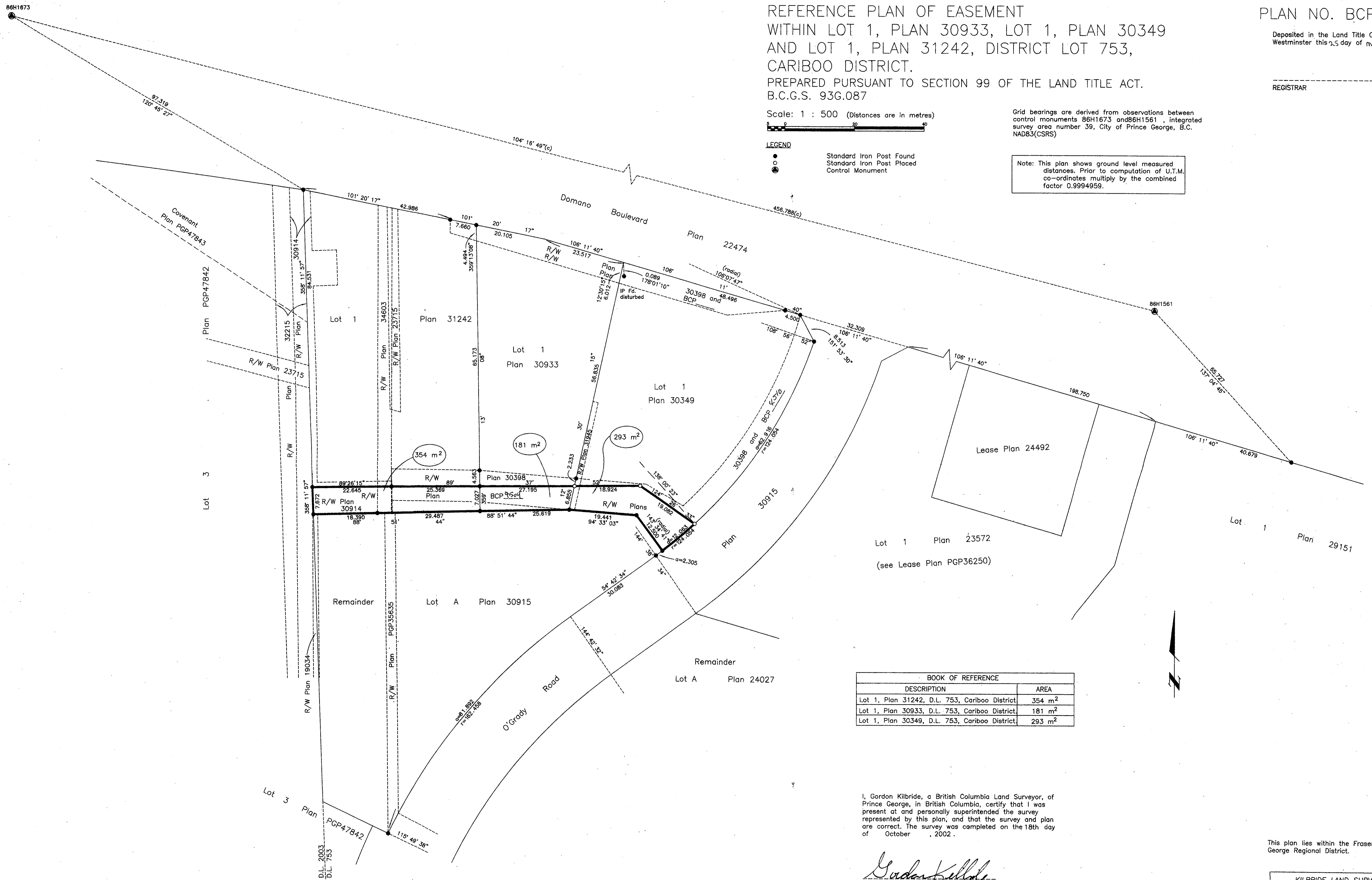


Grid bearings are derived from observations between
 control monuments 86H1673 and 86H1561, integrated
 survey area number 39, City of Prince George, B.C.
 NAD83(CSRS)

LEGEND

- Standard Iron Post Found
- Standard Iron Post Placed
- ⊙ Control Monument

Note: This plan shows ground level measured
 distances. Prior to computation of U.T.M.
 co-ordinates multiply by the combined
 factor 0.9994959.



BOOK OF REFERENCE	
DESCRIPTION	AREA
Lot 1, Plan 31242, D.L. 753, Cariboo District	354 m ²
Lot 1, Plan 30933, D.L. 753, Cariboo District	181 m ²
Lot 1, Plan 30349, D.L. 753, Cariboo District	293 m ²

I, Gordon Kilbride, a British Columbia Land Surveyor, of
 Prince George, in British Columbia, certify that I was
 present at and personally superintended the survey
 represented by this plan, and that the survey and plan
 are correct. The survey was completed on the 18th day
 of October, 2002.

Gordon Kilbride
 Gordon Kilbride, B.C.L.S.

This plan lies within the Fraser-Fort
 George Regional District.

KILBRIDE LAND SURVEYING LTD.
 British Columbia Land Surveyors
 Prince George, B.C.
 Ph: (250) 562-1196 Fax: 562-3656

F.B- RA D.L- 753 FILE No.- 020167B