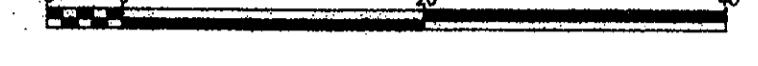


REFERENCE PLAN OF STATUTORY RIGHT OF WAY WITHIN LOT 1, PLAN 30933, LOT 1, PLAN 30349 AND LOT 1, PLAN 31242, DISTRICT LOT 753, CARIBOO DISTRICT. PREPARED PURSUANT TO SECTION 113 OF THE LAND TITLE ACT. B.C.G.S. 93G.087

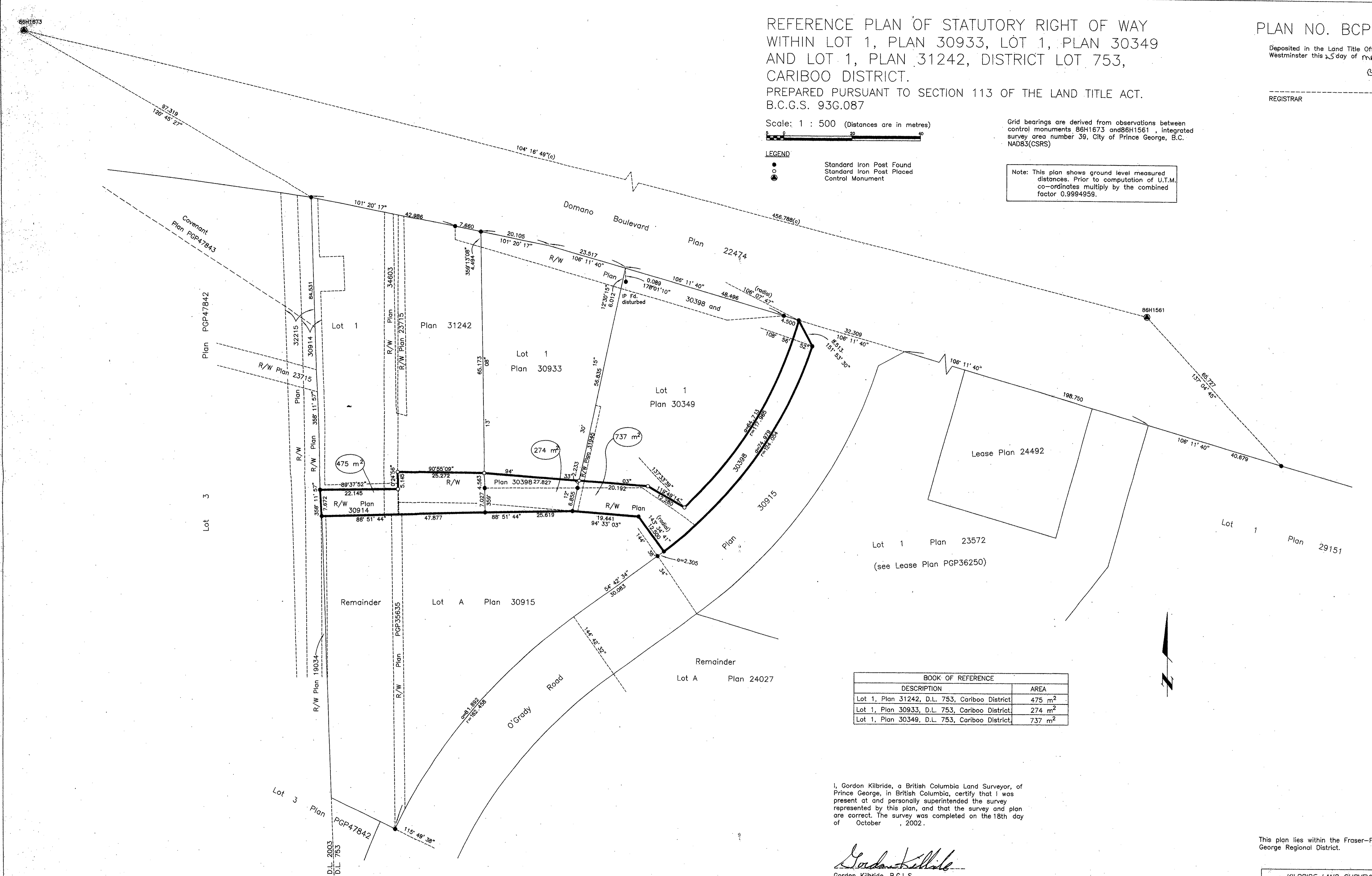
Scale: 1 : 500 (Distances are in metres)



- LEGEND
- Standard Iron Post Found
 - Standard Iron Post Placed
 - ⊙ Control Monument

Grid bearings are derived from observations between control monuments 86H1673 and 86H1561, integrated survey area number 39, City of Prince George, B.C. NAD83(CSRS)

Note: This plan shows ground level measured distances. Prior to computation of U.T.M. co-ordinates multiply by the combined factor 0.9994959.



BOOK OF REFERENCE	
DESCRIPTION	AREA
Lot 1, Plan 31242, D.L. 753, Cariboo District	475 m ²
Lot 1, Plan 30933, D.L. 753, Cariboo District	274 m ²
Lot 1, Plan 30349, D.L. 753, Cariboo District	737 m ²

I, Gordon Kilbride, a British Columbia Land Surveyor, of Prince George, in British Columbia, certify that I was present at and personally supervised the survey represented by this plan, and that the survey and plan are correct. The survey was completed on the 18th day of October, 2002.

Gordon Kilbride
Gordon Kilbride, B.C.L.S.

This plan lies within the Fraser-Fort George Regional District.

KILBRIDE LAND SURVEYING LTD.
British Columbia Land Surveyors
Prince George, B.C.
Ph: (250) 562-1196 Fax: 562-3656

F.B.- RA	D.L.- 753	FILE No.- 020167A
----------	-----------	-------------------