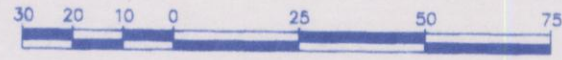


REFERENCE PLAN OF EASEMENT  
OVER PART OF LOT A,  
DISTRICT LOT 747, CARIBOO DISTRICT,  
PLAN BCP 43608.

Pursuant to Section 99(1)(e)  
of the Land Title Act.

BCGS 93G.087

Scale: 1 : 1500 (Distances are in metres)



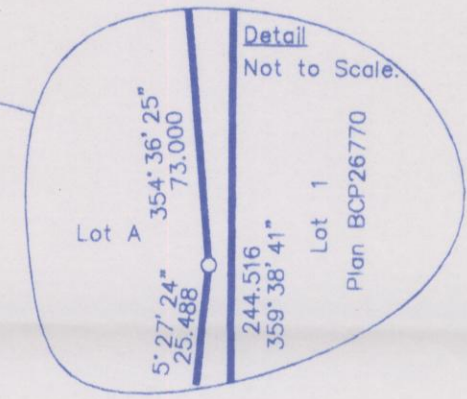
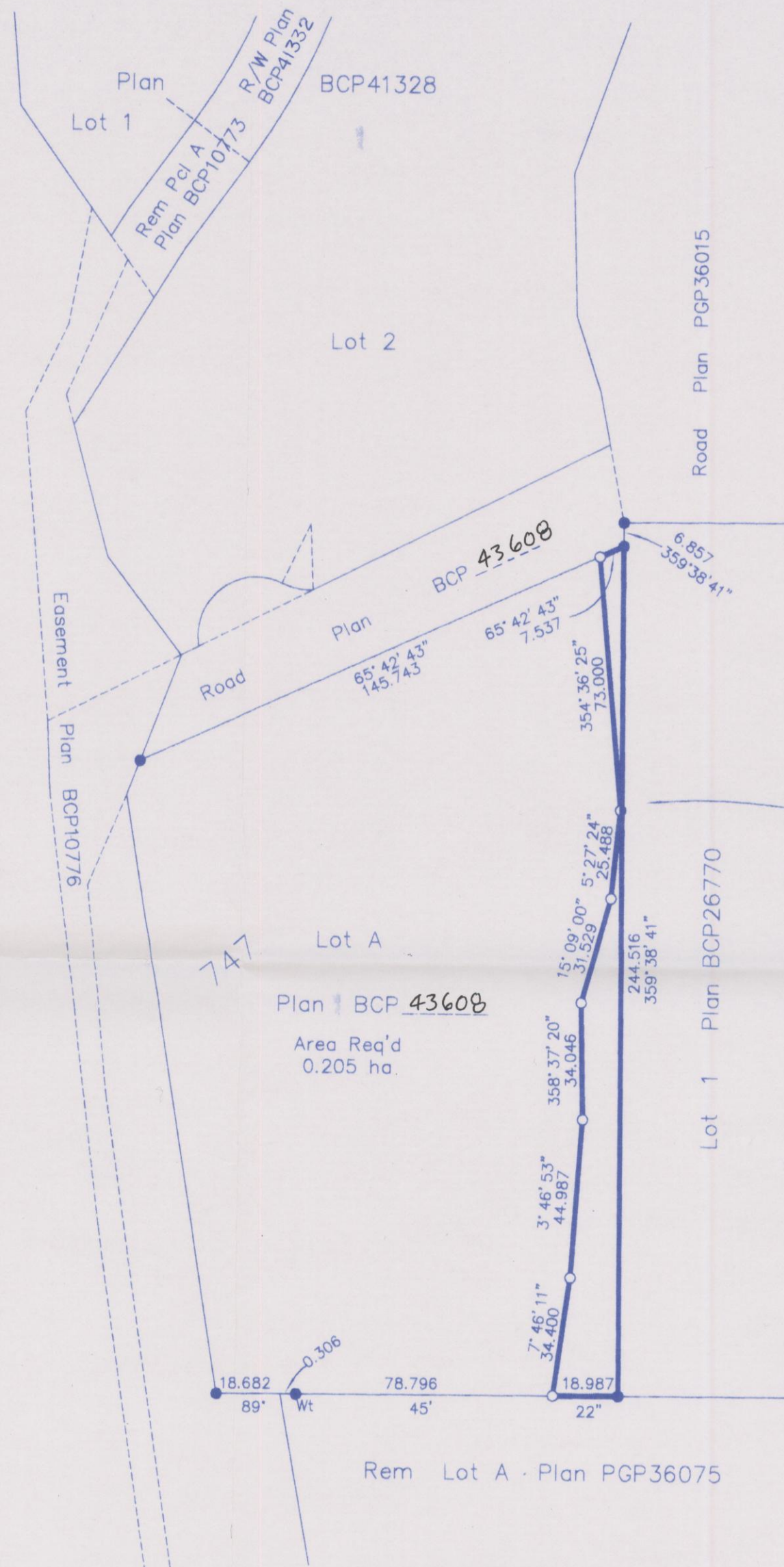
Bearings are grid bearings, derived from  
Plan BCP 43608

LEGEND

- Standard Iron Post Found
- Standard Iron Post Placed



Rem Pcl A (Plan BCP10773) of Part  
Pcl 1 Plan 34384 as shown on Plan PGP35183



PLAN NO. BCP 43729

Deposited in the Land Title Office at New  
Westminster this 9th day of February 2010

L. Blaschuk per [Signature]  
REGISTRAR

I, Dale Keown, a British Columbia Land Surveyor, of  
Prince George, in British Columbia, certify that I was  
present at and personally superintended the survey  
represented by this plan, and that the survey and plan  
are correct. The field survey was completed on the 25th day  
of September, 2008. The plan was completed and  
checked, and the checklist filed under #88765, on the  
22nd day of October, 2008.

[Signature]  
Dale Keown, B.C.L.S.

Reviewed and verified correct

[Signature]  
Supervisor Survey and Crossing  
BCR Properties Ltd. # 884C8

This plan lies within the Regional  
District of Fraser-Fort George.

**McElhanney**  
McElhanney Associates  
Land Surveying Ltd.  
Prince George, B.C.  
Ph: (250) 561-2229 Fax: 563-1941

F.B.:	D.L.- 747	File No. - 5347-4E
-------	-----------	--------------------