

Ref: BB819267

**EXPLANATORY PLAN OF STATUTORY RIGHT OF WAY OVER PART OF LOT A, DISTRICT LOT 1426, CARIBOO DISTRICT, PLAN 19306, EXCEPT PLANS 23321 AND BCP39433.**

PURSUANT TO SECTION 99(1)(e) OF THE LAND TITLE ACT FOR THE PURPOSE OF OVERHEAD ELECTRICAL TRANSMISSION.

BCGS 93G087

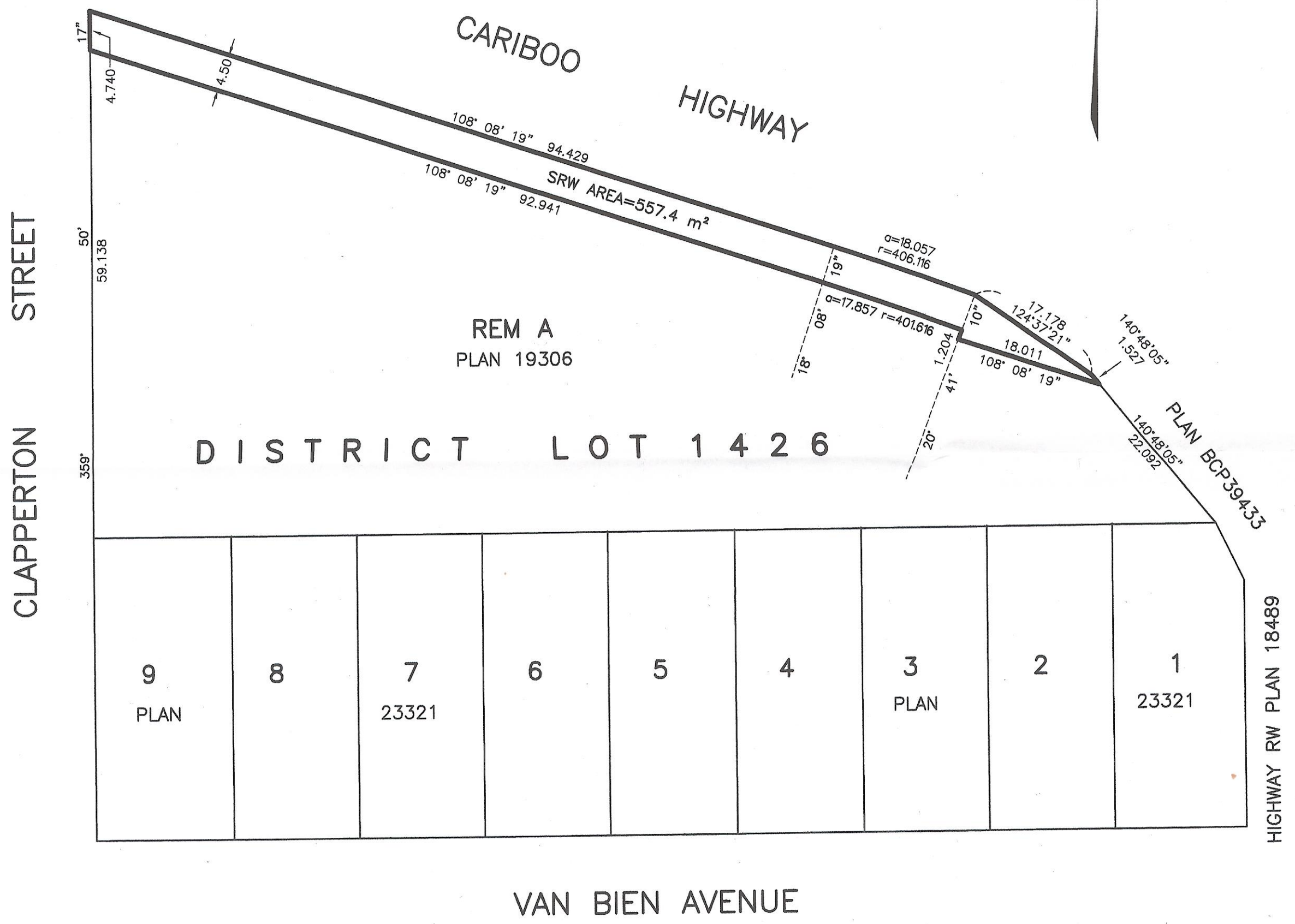
GRID BEARINGS ARE DERIVED FROM PLAN BCP39433.

ALL DISTANCES ARE IN METRES.



SCALE 1:500

THE INTENDED PLOT SIZE OF THIS PLAN IS 560mm IN WIDTH BY 432mm IN HEIGHT (C-SIZE) WHEN PLOTTED AT A SCALE OF 1:500.



THIS PLAN WAS COMPLETED AND CHECKED, AND THE CHECKLIST FILED UNDER #96935 ON THE 1ST DAY OF JUNE, 2009 AND IS HEREBY CERTIFIED CORRECT IN ACCORDANCE WITH LAND TITLE OFFICE RECORDS.

*Alan W. Comfort*  
ALAN W. COMFORT, B.C.L.S.

THIS PLAN LIES WITHIN THE REGIONAL DISTRICT OF FRASER-FORT GEORGE.

ORIGINAL

DRAWING NUMBER: 805-S7-C228