

REFERENCE PLAN OF CONSOLIDATION  
 OF BLOCK A, DISTRICT LOT 10225, CARIBOO  
 DISTRICT AND OF LOT A, DISTRICT LOT 2609,  
 CARIBOO DISTRICT, PLAN 17153  
 EXCEPT PARCEL B(L18748)  
 Pursuant to Section 100(1)(b)  
 of the Land Title Act.

PLAN NO. BCP 42176

Deposited in the Land Title Office at New  
 Westminster this 14 day of SEPT 2009.

REGISTRAR

BB808404

BCGS 93G.096

Scale: 1 : 1250 (Distances are in metres)



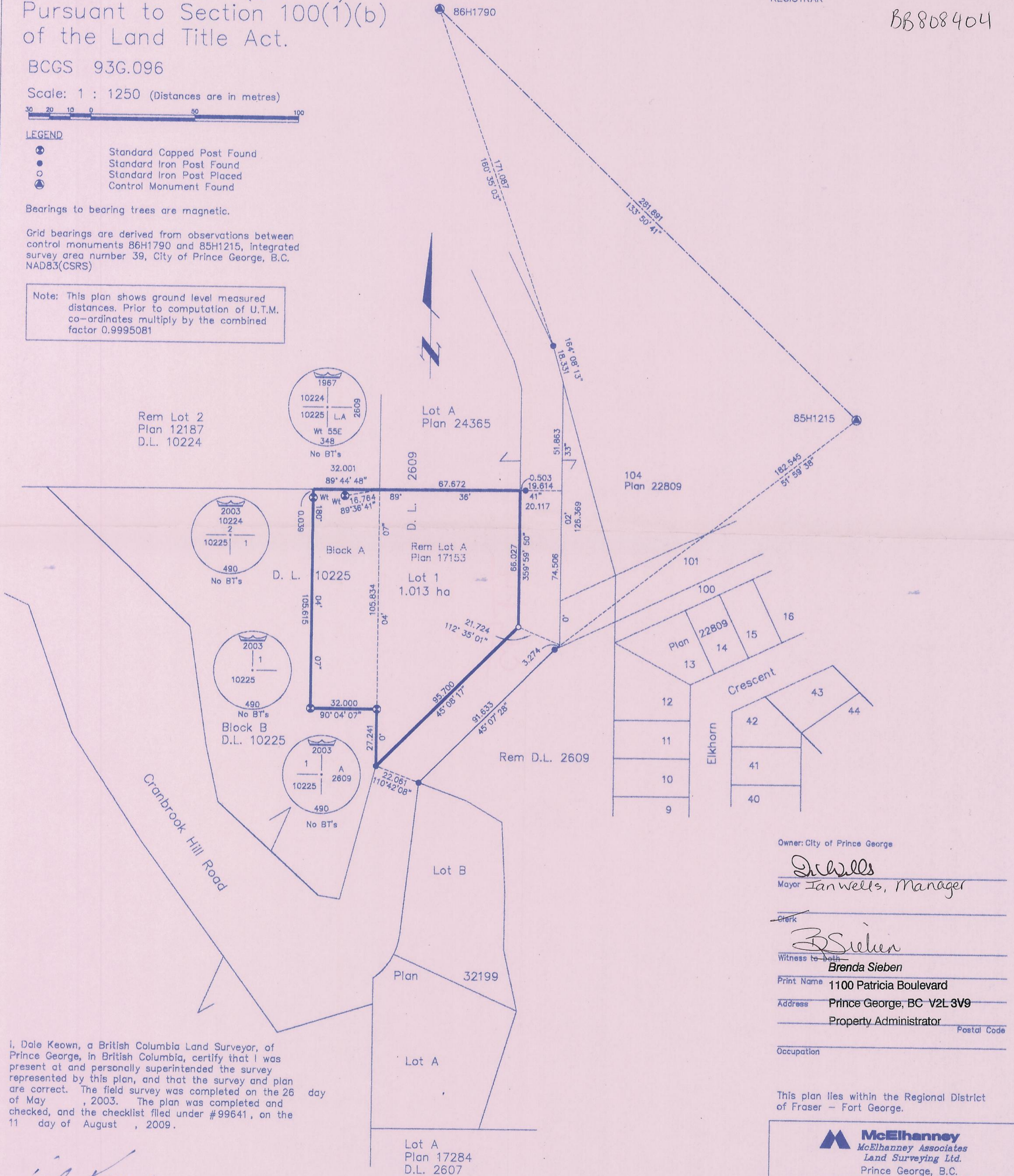
LEGEND

- ⊙ Standard Capped Post Found
- Standard Iron Post Found
- Standard Iron Post Placed
- ⊕ Control Monument Found

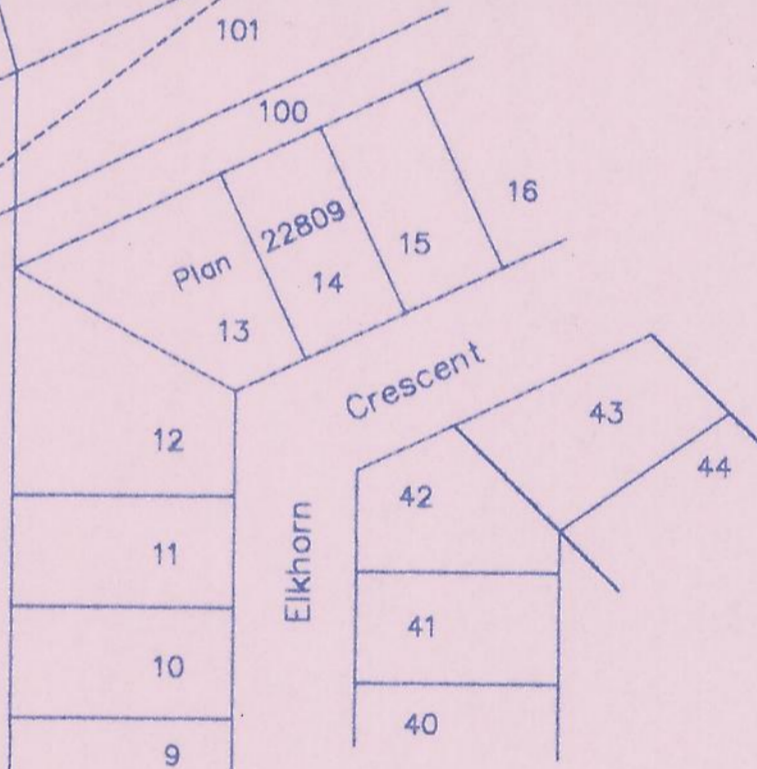
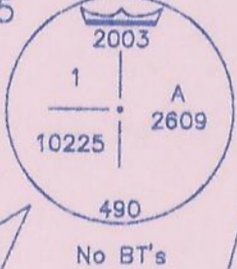
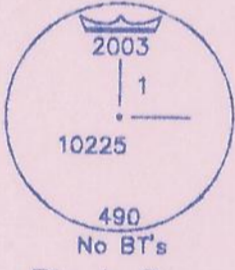
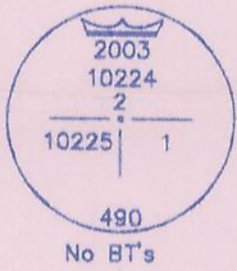
Bearings to bearing trees are magnetic.

Grid bearings are derived from observations between  
 control monuments 86H1790 and 85H1215, integrated  
 survey area number 39, City of Prince George, B.C.  
 NAD83(CSRS)

Note: This plan shows ground level measured  
 distances. Prior to computation of U.T.M.  
 co-ordinates multiply by the combined  
 factor 0.9995081



Rem Lot 2  
 Plan 12187  
 D.L. 10224



I, Dale Keown, a British Columbia Land Surveyor, of  
 Prince George, in British Columbia, certify that I was  
 present at and personally superintended the survey  
 represented by this plan, and that the survey and plan  
 are correct. The field survey was completed on the 26  
 day of May, 2003. The plan was completed and  
 checked, and the checklist filed under #99641, on the  
 11 day of August, 2009.

*Dale Keown*  
 Dale Keown, B.C.L.S.

Owner: City of Prince George  
*J. Wells*  
 Mayor Ian Wells, Manager  
 Clerk  
*B. Sieben*  
 Witness to both  
 Brenda Sieben  
 Print Name 1100 Patricia Boulevard  
 Address Prince George, BC V2L 3V9  
 Property Administrator  
 Postal Code  
 Occupation

This plan lies within the Regional District  
 of Fraser - Fort George.

**McElhanney**  
 McElhanney Associates  
 Land Surveying Ltd.  
 Prince George, B.C.  
 Ph: (250) 562-1196 Fax: 563-1941

F.B.- WV-30	D.L.- 2609	File No. - 5761
-------------	------------	-----------------