

REFERENCE PLAN OF EASEMENT OVER PART OF
 LOT A, DISTRICT LOT 4376, CARIBOO DISTRICT, PLAN BCP 41860

41861

PLAN NO. BCP _____

Pursuant to Section 99(1)(e)
 of the Land Title Act.

Deposited in the Land Title Office at New
 Westminster this 12 day of AUG. 2009

BCGS 93G.097

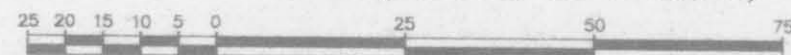
Integrated Survey Area No. 39, City of Prince George
 NAD83(CSRS).

Grid bearings are derived from observations between
 geodetic control monuments 86H1759 and 86H1775.

Note: This plan shows horizontal ground-level
 distances except where otherwise noted.
 To compute grid distances, multiply ground-level
 distances by combined factor 0.9995075

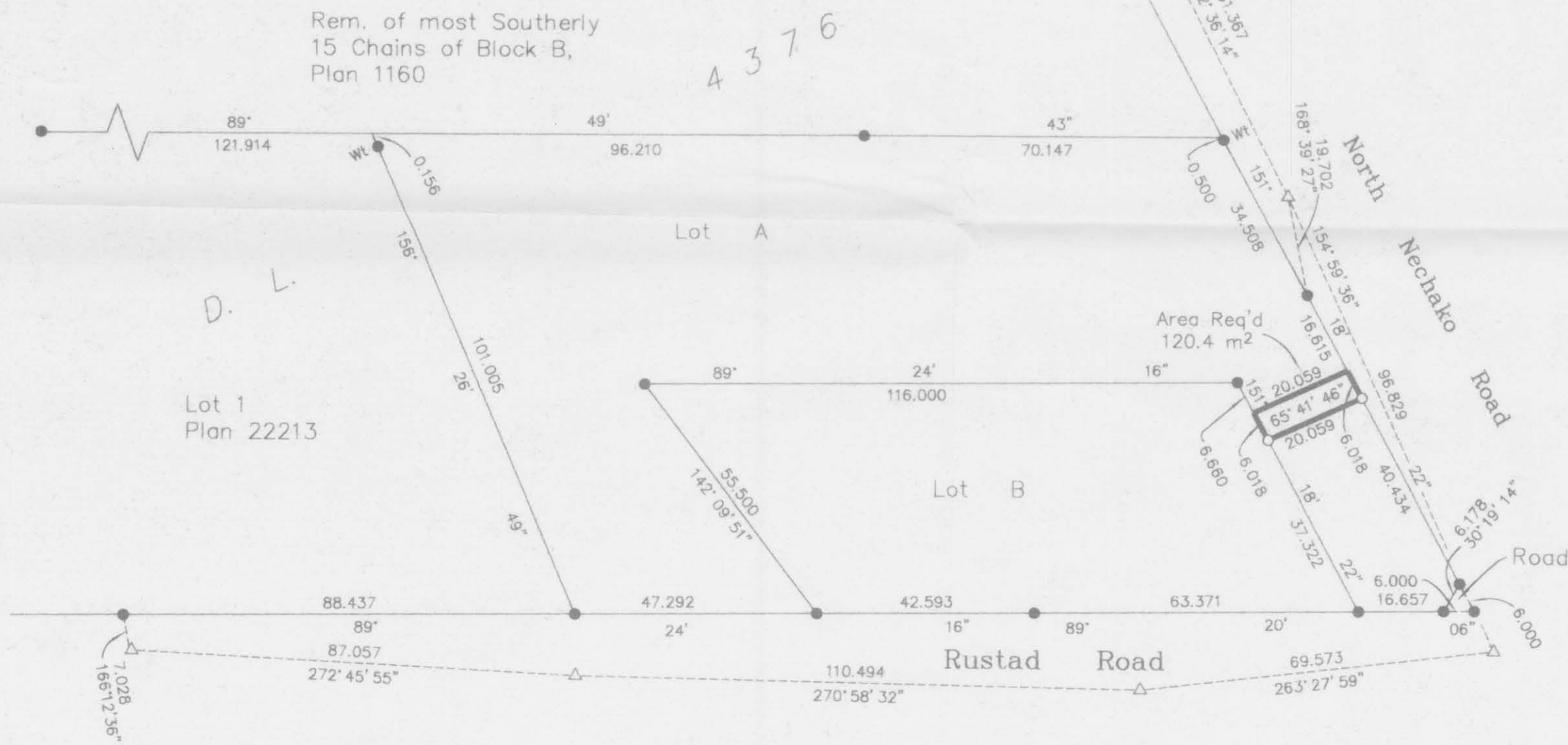
TRAVERSE TABLE			
STA	BEARING	DISTANCE	STA
25	325°21'56"	929.805	126
126	337°59'11"	337.938	127
127	314°24'42"	397.084	128
128	288°47'35"	461.509	86H1775
86H1775	177°58'22"	516.924	86H1759

Scale: 1 : 1000 (Distances are in metres)



LEGEND

- Standard Iron Post Found
- Standard Iron Post Placed
- △ Traverse Hub Placed



I, Dale Keown, a British Columbia Land Surveyor, of
 Prince George, in British Columbia, certify that I was
 present at and personally superintended the survey
 represented by this plan, and that the survey and plan
 are correct. The field survey was completed on the 26 day
 of March, 2009. The plan was completed and
 checked, and the checklist filed under #96999, on the
 2nd day of June, 2009.

Dale Keown

Dale Keown, B.C.L.S.

This plan lies within the Regional District
 of Fraser - Fort George.

McElhanney
 McElhanney Associates
 Land Surveying Ltd.
 Prince George, B.C.

Ph: (250) 561-2229 Fax: 563-1941

F.B.- RA D.L.- 4376 File No. - 5708-E