

EXPLANATORY PLAN TO ACCOMPANY 8TH AVENUE ROAD CLOSURE BYLAW No. 3282, 2009, CLOSING A PORTION OF ROAD IN D.L. 251 AS DEDICATED ON PLAN 923, ADJACENT TO LOT 21, BLOCK 28, SECTION 6, DISTRICT LOT 251, RANGE 5, COAST DISTRICT, PLAN 923.

PLAN BCP 41443

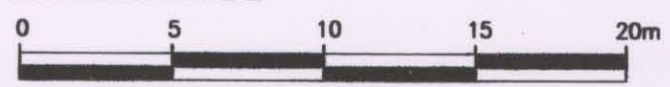
REF. # BB 948394

DEPOSITED IN THE LAND TITLE OFFICE AT NEW WESTMINSTER, B.C. THIS 12 DAY OF July, 2009

PURSUANT TO SECTION 120 OF THE LAND TITLE ACT AND SECTION 40 OF THE COMMUNITY CHARTER. B.C.G.S. 103J.039

REGISTRAR

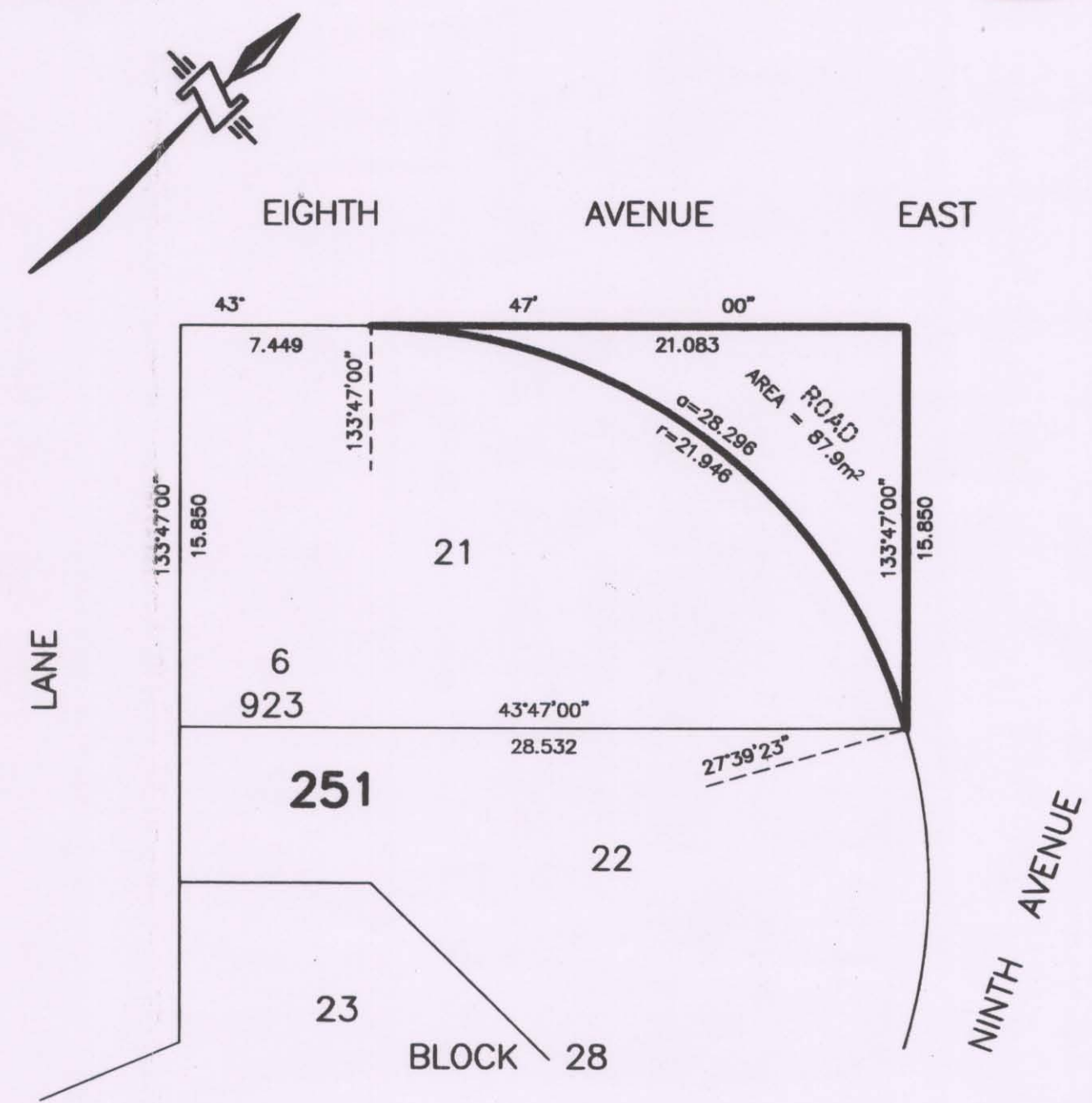
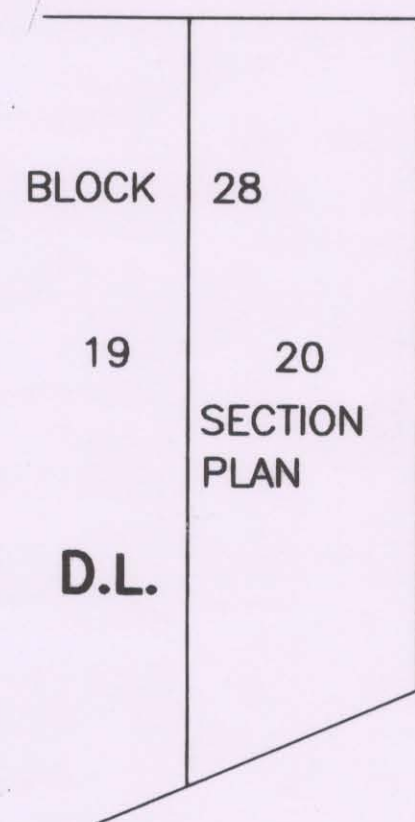
SCALE : 1:250



(ALL DIMENSIONS ARE IN METRES)

LEGEND

BEARINGS ARE ASTRONOMIC, DERIVED FROM PLAN 923.



CERTIFIED CORRECT IN ACCORDANCE WITH LAND TITLE OFFICE RECORDS THIS 12th DAY OF AUGUST, 2008.

THE PLAN WAS COMPLETED AND CHECKED, AND THE CHECKLIST FILED UNDER #85247, ON THE 12TH DAY OF AUGUST, 2008.

A. S. Azzi B.C.L.S.

THIS PLAN LIES WITHIN THE SKEENA - QUEEN CHARLOTTE REGIONAL DISTRICT

McELHANNEY ASSOCIATES LAND SURVEYING LTD. SUITE 1- 5008 POHLE AVENUE TERRACE, B.C. V8G 4S8 FILE: 2321-43926-A