

REFERENCE PLAN OF STATUTORY RIGHT OF WAY OVER PART OF  
 PARCEL 1, DISTRICT LOTS 745 AND 747, CARIBOO DISTRICT,  
 PLAN BCP39104.

PLAN NO. BCP-40681-

Deposited in the Land Title Office at New  
 Westminster this 21 day of April 2009.

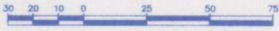
Pursuant to Section 113  
 of the Land Title Act.

REGISTRAR

Adj: 85921458.

BCGS 93G.087

Scale: 1 : 1500 (Distances are in metres)

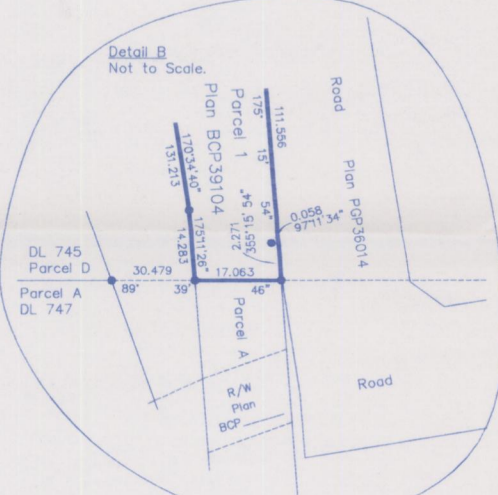
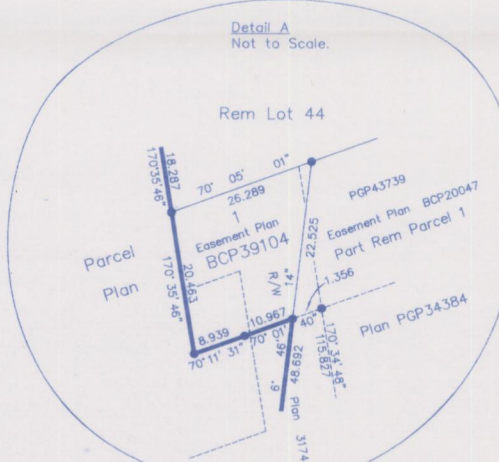
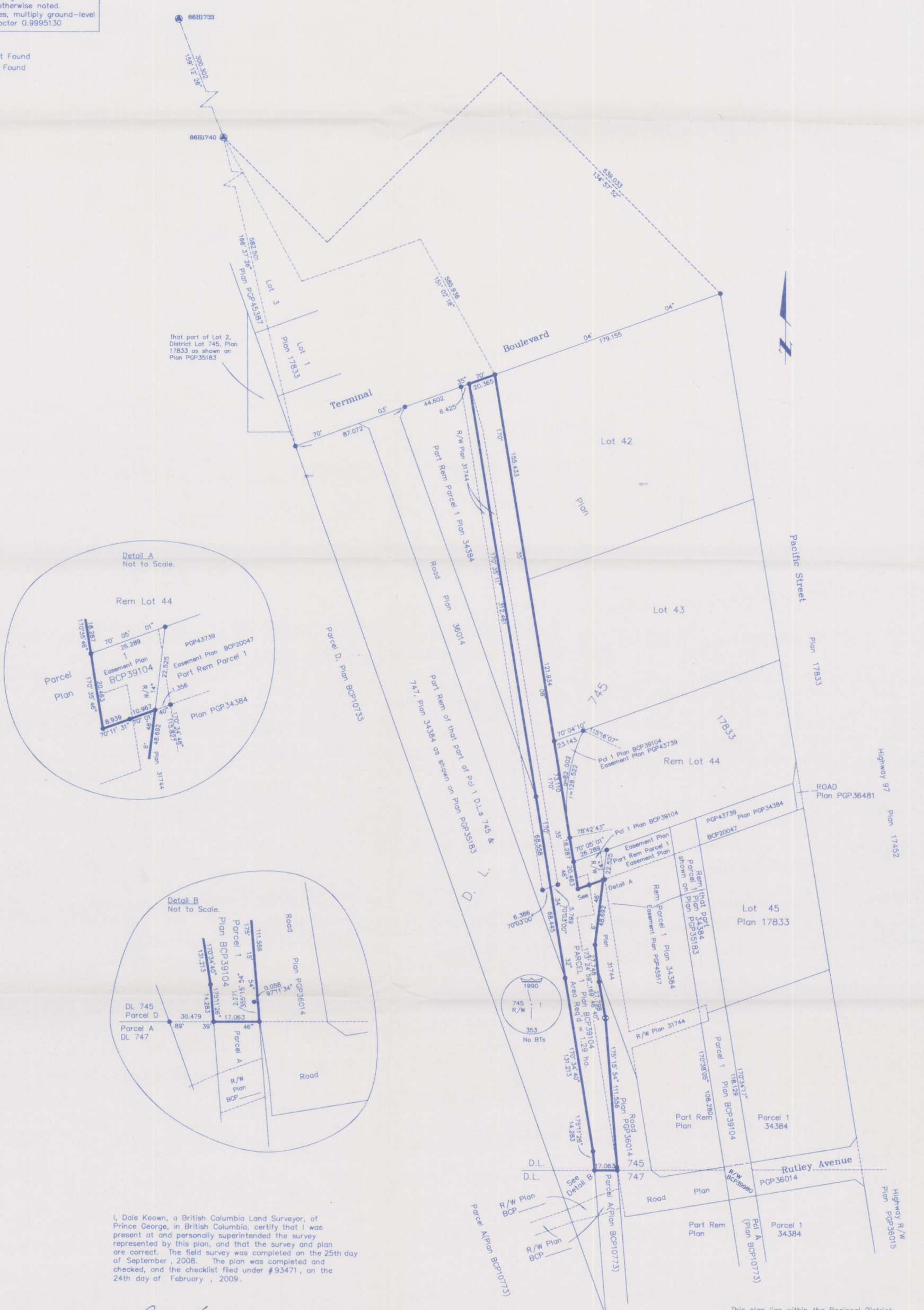


Integrated Survey Area No. 39, City of Prince George  
 NAD83(CSRs).

Grid bearings are derived from observations between  
 geodetic control monuments 86H1733 and 86H1740.

Note:  
 This plan shows horizontal ground-level  
 distances except where otherwise noted.  
 To compute grid distances, multiply ground-level  
 distances by combined factor 0.9995130

- LEGEND
- Standard Iron Post Found
  - ⊙ Control Monument Found



I, Dale Keown, a British Columbia Land Surveyor, of  
 Prince George, in British Columbia, certify that I was  
 present at and personally superintended the survey  
 represented by this plan, and that the survey and plan  
 are correct. The field survey was completed on the 25th day  
 of September, 2008. The plan was completed and  
 checked, and the checklist filed under #93471, on the  
 24th day of February, 2009.

*Dale Keown*  
 Dale Keown, B.C.L.S.

Reviewed and verified correct

*R. Dawson*  
 Superior Survey and Crossing  
 BCR Properties Ltd. 884 88

This plan lies within the Regional District  
 of Fraser - Fort George.

**McElhanney**  
 McElhanney Associates  
 Land Surveying Ltd.  
 Prince George, B.C.  
 Ph: (250) 562-1196 Fax: 563-1941

F.B.- XT60 D.L.- 747 File No. - 5346-4RW